

PROPERTY OWNER:
DCK LEASING COMPANY, LLC
6 PPG PLACE, SUITE 700
PITTSBURGH, PA 15222

APPLICANT:
SCANNELL PROPERTIES #405, LLC
8801 RIVER CROSSING BLVD.,
SUITE 300
INDIANAPOLIS, IN 46240
763-331-8853

REFERENCES:
THIS PLAN REFERS TO THE FOLLOWING:
1. PLAN ENTITLED "PROPERTY & TOPOGRAPHIC SURVEY, DCK LEASING COMPANY LLC, SOUTH WINDSOR, CONNECTICUT" DATED 9/25/19 PREPARED BY DESIGN PROFESSIONALS, INC.

UTILITY PLAN NOTES:
1. "CALL BEFORE YOU DIG" - CONTRACTOR SHALL NOTIFY UTILITY COMPANIES OF PENDING EXCAVATION BY CALLING 811 AT LEAST 3 WORKING DAYS PRIOR TO BEGINNING EXCAVATION.
2. THIS PLAN SHALL BE USED FOR UTILITY PURPOSES ONLY.
3. REFER TO NOTES SHEET FOR UTILITY NOTES
4. EXPECTED SEWER FLOWS, DESIGN INFORMATION & PUMP STATION EQUIPMENT SPECIFICATIONS TO BE PROVIDED TO TOWN BEFORE WPCA FINAL APPROVAL.

Copyright © 2019 Design Professionals, Inc. - All Rights Reserved.

21 EBBEY DRIVE
P.O. BOX 167
SOUTH WINDSOR, CT 06074
860-291-9797 - F
www.designprofessionals.com

design professionals
CIVIL & TRAFFIC ENGINEERS / LAND SURVEYORS
PLANNERS / LANDSCAPE ARCHITECTS

PREPARED FOR:
Scannell Properties #405, LLC
8801 River Crossing Blvd.,
Suite 300
Indianapolis, IN 46240
763-331-8853

PROJECT NO.:
4260

DATE:
10/21/19

DESIGNER:
BFW

REVIEWER:
BFW

DATE:
4/9/20

SCALE:
AS SHOWN

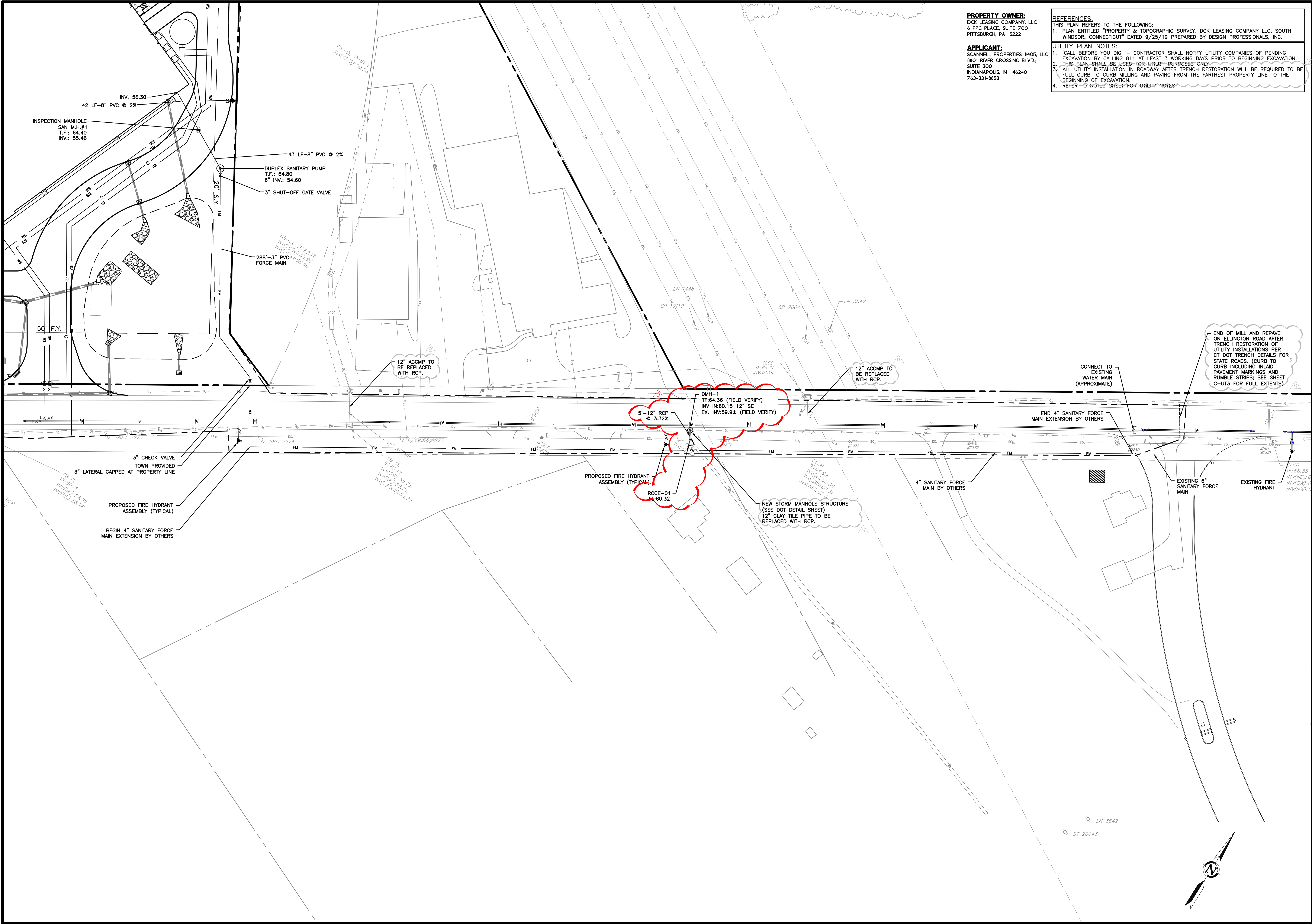
**240 ELLINGTON ROAD
DISTRIBUTION CENTER**

240 ELLINGTON RD. & RO08A JOHN FITCH BLVD.
SOUTH WINDSOR, CONNECTICUT
GIS #30300240 & #4770R008A

NO.	DATE	REVISIONS	BY
4	12/13/19	MDC COORDINATION	DHJ
5	12/23/19	TOWN CHECKSET	JJM
6	1/9/20	FINAL TOWN PLANS	JJM
7	1/20/20	TOWN CHANGE ORDER #1	JJM
8	3/3/20	REVISED PER DOT & TOWN COMMENTS	REM
9	4/9/20	TOWN CHANGE ORDER #2 & MDC REVISIONS	REM

SITE UTILITY PLAN

SHEET 6 OF 7



PROPERTY OWNER:
DCK LEASING COMPANY, LLC
6 PPG PLACE, SUITE 700
PITTSBURGH, PA 15222

APPLICANT:
SCANNELL PROPERTIES #405, LLC
8801 RIVER CROSSING BLVD.,
SUITE 300
INDIANAPOLIS, IN 46240
763-331-8853

REFERENCES:
THIS PLAN REFERS TO THE FOLLOWING:
1. PLAN ENTITLED "PROPERTY & TOPOGRAPHIC SURVEY, DCK LEASING COMPANY LLC, SOUTH WINDSOR, CONNECTICUT" DATED 9/25/19 PREPARED BY DESIGN PROFESSIONALS, INC.

UTILITY PLAN NOTES:
1. "CALL BEFORE YOU DIG" - CONTRACTOR SHALL NOTIFY UTILITY COMPANIES OF PENDING EXCAVATION BY CALLING 811 AT LEAST 3 WORKING DAYS PRIOR TO BEGINNING EXCAVATION.
2. THIS PLAN SHALL BE USED FOR UTILITY PURPOSES ONLY.
3. ALL UTILITY INSTALLATION IN ROADWAY AFTER TRENCH RESTORATION WILL BE REQUIRED TO BE FULL CURB TO CURB MILLING AND PAVING FROM THE FARTHEST PROPERTY LINE TO THE BEGINNING OF EXCAVATION.
4. REFER TO NOTES SHEET FOR UTILITY NOTES

240 ELLINGTON ROAD
DISTRIBUTION CENTER
240 ELLINGTON RD. & RO08A JOHN FITCH BLVD.
SOUTH WINDSOR, CONNECTICUT
GIS #30300240 & #4770R008A

NO.	DATE	REVISIONS	BY
4	12/13/19	MDC COORDINATION	DHJ
5	12/23/19	TOWN CHECKSET	JJM
6	1/9/20	FINAL TOWN PLANS	JJM
7	1/20/20	TOWN CHANGE ORDER #1	JJM
8	3/3/20	REVISED PER DOT & TOWN COMMENTS	REM
9	4/9/20	TOWN CHANGE ORDER #2 & MDC REVISIONS	REM

OFF-SITE UTILITY
PLAN
SHEET
C-UT2
SHEET 7 OF 7

PREPARED FOR
Scannell Properties #405, LLC
8801 River Crossing Blvd.
Suite 300
Indianapolis, IN 46240
763-331-8853

DESIGNED BY
10/21/19
DWG
CHECKED BY
10/21/19
DWG
APPROVED BY
10/21/19
DWG

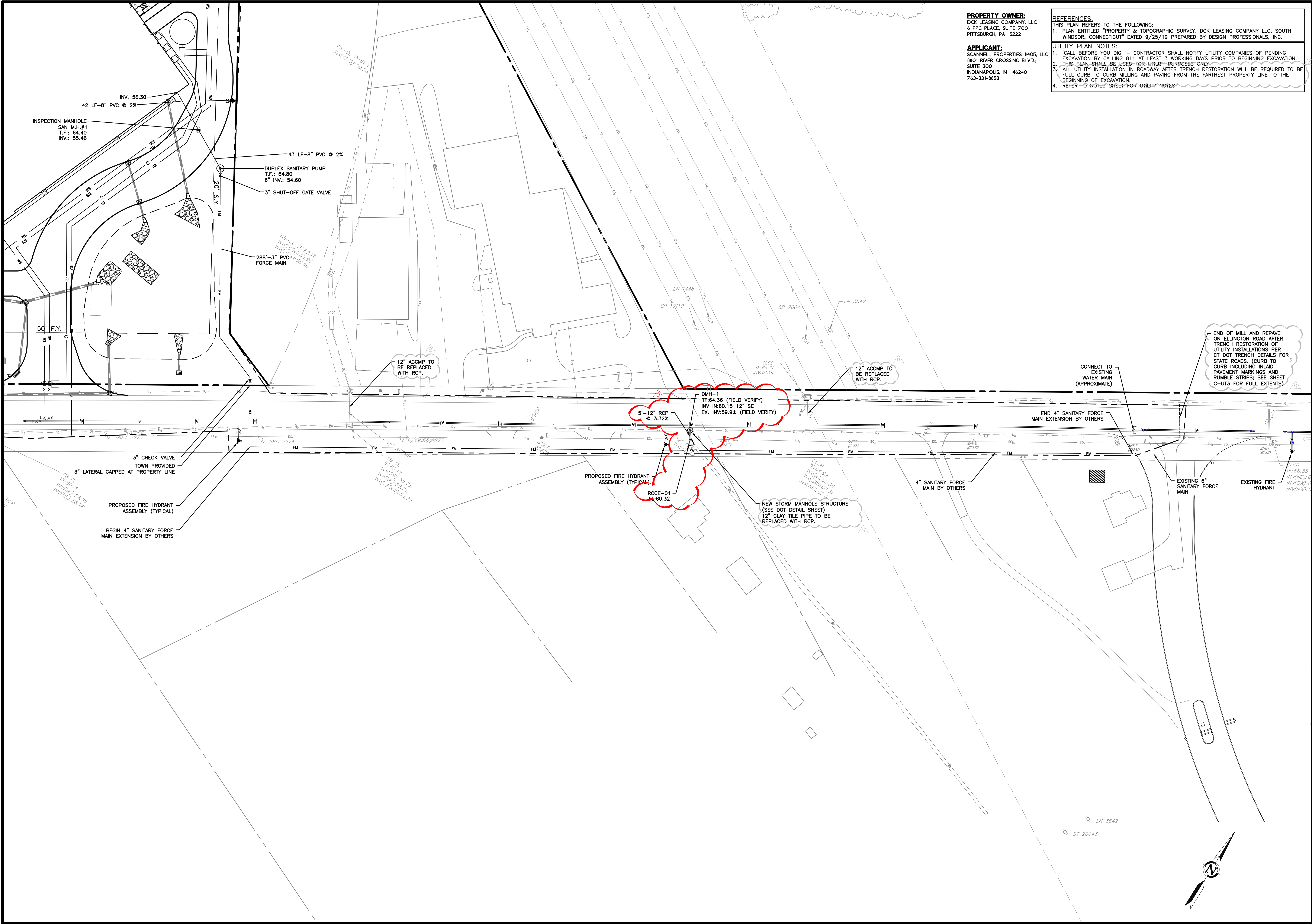
PROJECT NO.
4260
DATE
10/21/19
SCALE
AS SHOWN
DRAWN BY
C-UT2
CHECKED BY
SFC

21 EBBEY DRIVE
P.O. BOX 1167
SOUTH WINDSOR, CT 06074
860-298-9257 - F
www.designprofessionalsinc.com

Design Professionals
CIVIL & TRAFFIC ENGINEERS / LAND SURVEYORS
PLANNERS / LANDSCAPE ARCHITECTS

Copyright © 2019 Design Professionals, Inc. - All Rights Reserved

This plan is a final plan and shall be used for the purpose of construction. It is not to be used for any other purpose without the written consent of Design Professionals, Inc. The plan is not to be used for any other purpose without the written consent of Design Professionals, Inc. The plan is not to be used for any other purpose without the written consent of Design Professionals, Inc.



PROPERTY OWNER:
DCK LEASING COMPANY, LLC
6 PPG PLACE, SUITE 700
PITTSBURGH, PA 15222

APPLICANT:
SCANNELL PROPERTIES #405, LLC
8801 RIVER CROSSING BLVD.,
SUITE 300
INDIANAPOLIS, IN 46240
763-331-8853

REFERENCES:
THIS PLAN REFERS TO THE FOLLOWING:
1. PLAN ENTITLED "PROPERTY & TOPOGRAPHIC SURVEY, DCK LEASING COMPANY LLC, SOUTH WINDSOR, CONNECTICUT" DATED 9/25/19 PREPARED BY DESIGN PROFESSIONALS, INC.

UTILITY PLAN NOTES:
1. "CALL BEFORE YOU DIG" - CONTRACTOR SHALL NOTIFY UTILITY COMPANIES OF PENDING EXCAVATION BY CALLING 811 AT LEAST 3 WORKING DAYS PRIOR TO BEGINNING EXCAVATION.
2. THIS PLAN SHALL BE USED FOR UTILITY PURPOSES ONLY.
3. ALL UTILITY INSTALLATION IN ROADWAY AFTER TRENCH RESTORATION WILL BE REQUIRED TO BE FULL CURB TO CURB MILLING AND PAVING FROM THE FARTHEST PROPERTY LINE TO THE BEGINNING OF EXCAVATION.
4. REFER TO NOTES SHEET FOR UTILITY NOTES

240 ELLINGTON ROAD
DISTRIBUTION CENTER
240 ELLINGTON RD. & RO08A JOHN FITCH BLVD.
SOUTH WINDSOR, CONNECTICUT
GIS #30300240 & #4770R008A

NO.	DATE	REVISIONS	BY
4	12/13/19	MDC COORDINATION	DHJ
5	12/23/19	TOWN CHECKSET	JJM
6	1/9/20	FINAL TOWN PLANS	JJM
7	1/20/20	TOWN CHANGE ORDER #1	JJM
8	3/3/20	REVISED PER DOT & TOWN COMMENTS	REM
9	4/9/20	TOWN CHANGE ORDER #2 & MDC REVISIONS	REM

OFF-SITE UTILITY
PLAN
SHEET
C-UT2
SHEET 7 OF 7

PREPARED FOR
Scannell Properties #405, LLC
8801 River Crossing Blvd.
Suite 300
Indianapolis, IN 46240
763-331-8853

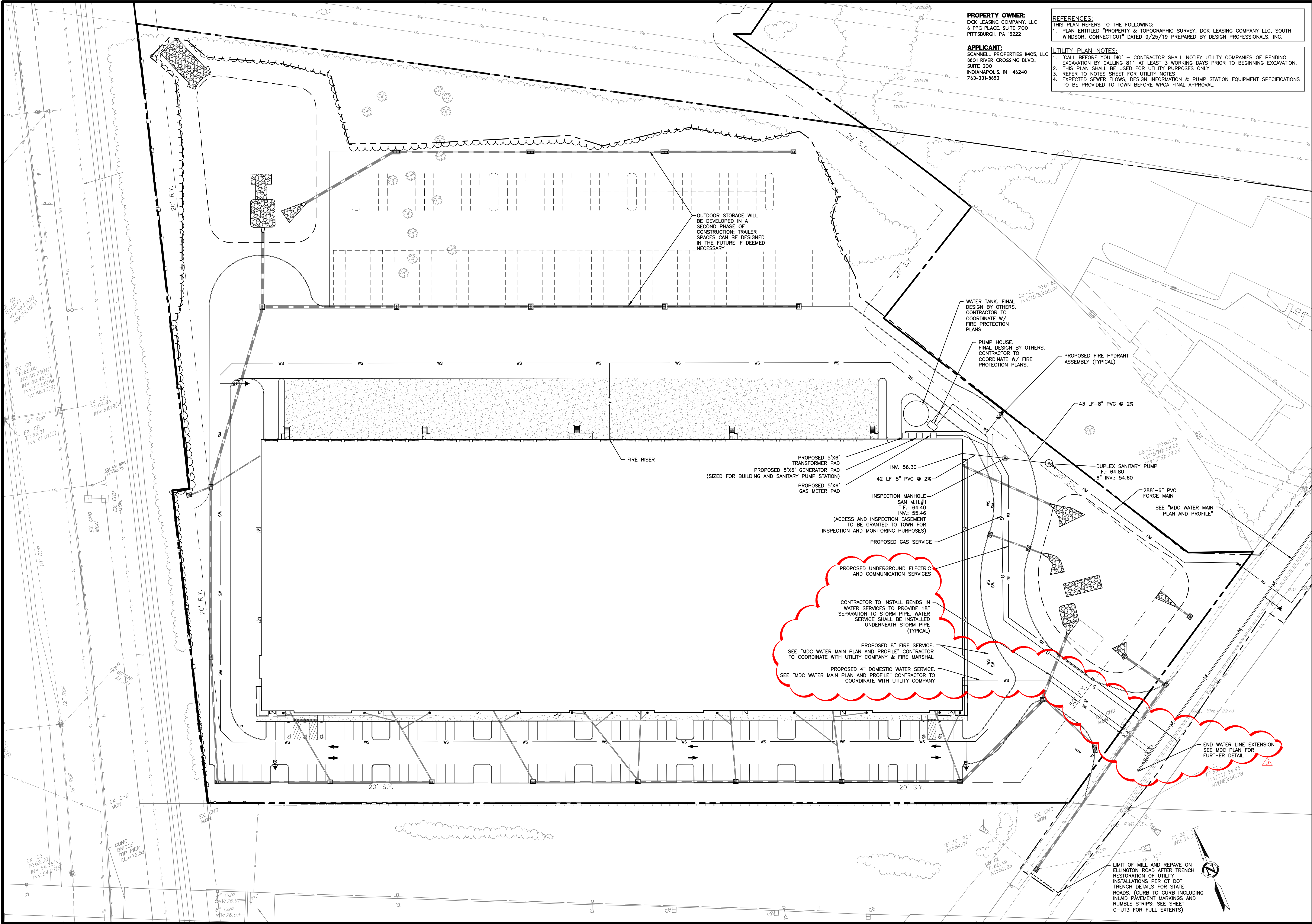
DESIGNED BY
10/21/19
DWG
CHECKED BY
10/21/19
DWG
APPROVED BY
10/21/19
DWG

PROJECT NO.
4260
DATE
10/21/19
SCALE
AS SHOWN
DRAWN BY
10/21/19
DWG
CHECKED BY
10/21/19
DWG

Copyright © 2019 Design Professionals, Inc. - All Rights Reserved

21 EBBEY DRIVE
P.O. BOX 1167
SOUTH WINDSOR, CT 06074
860-298-9257 - F
www.designprofessionalsinc.com

Design Professionals
CIVIL & TRAFFIC ENGINEERS / LAND SURVEYORS
PLANNERS / LANDSCAPE ARCHITECTS



PROPERTY OWNER:
DCK LEASING COMPANY, LLC
6 PPG PLACE, SUITE 700
PITTSBURGH, PA 15222

APPLICANT:
SCANNELL PROPERTIES #405, LLC
8801 RIVER CROSSING BLVD.,
SUITE 300
INDIANAPOLIS, IN 46240
763-331-8853

REFERENCES:
THIS PLAN REFERS TO THE FOLLOWING:
1. PLAN ENTITLED "PROPERTY & TOPOGRAPHIC SURVEY, DCK LEASING COMPANY LLC, SOUTH WINDSOR, CONNECTICUT" DATED 9/25/19 PREPARED BY DESIGN PROFESSIONALS, INC.

UTILITY PLAN NOTES:
1. "CALL BEFORE YOU DIG" - CONTRACTOR SHALL NOTIFY UTILITY COMPANIES OF PENDING EXCAVATION BY CALLING 811 AT LEAST 3 WORKING DAYS PRIOR TO BEGINNING EXCAVATION.
2. THIS PLAN SHALL BE USED FOR UTILITY PURPOSES ONLY.
3. REFER TO NOTES SHEET FOR UTILITY NOTES
4. EXPECTED SEWER FLOWS, DESIGN INFORMATION & PUMP STATION EQUIPMENT SPECIFICATIONS TO BE PROVIDED TO TOWN BEFORE WPCA FINAL APPROVAL.

Copyright © 2019 Design Professionals, Inc. - All Rights Reserved.

21 EBBEY DRIVE
P.O. BOX 167
SOUTH WINDSOR, CT 06074
860-291-9727 - F
www.designprofessionals.com

design professionals
CIVIL & TRAFFIC ENGINEERS / LAND SURVEYORS
PLANNERS / LANDSCAPE ARCHITECTS

PREPARED FOR:
Scannell Properties #405, LLC
8801 River Crossing Blvd.,
Suite 300
Indianapolis, IN 46240
763-331-8853

PROJECT NO.: 4260
DATE: 10/21/19
DESIGN BY: BFW
REVIEW BY: [blank]
DATE: [blank]
SCALE: 1" = 40'

**240 ELLINGTON ROAD
DISTRIBUTION CENTER**
240 ELLINGTON RD. & RO08A JOHN FITCH BLVD.
SOUTH WINDSOR, CONNECTICUT
GIS #30300240 & #4770R008A

NO.	DATE	REVISIONS	BY
4	12/13/19	MDC COORDINATION	DHJ
5	12/23/19	TOWN CHECKSET	JJM
6	1/9/20	FINAL TOWN PLANS	JJM
7	1/20/20	TOWN CHANGE ORDER #1	JJM
8	3/3/20	REVISED PER DOT & TOWN COMMENTS	REM
9	4/9/20	TOWN CHANGE ORDER #2 & MDC REVISIONS	REM

SITE UTILITY PLAN

SHEET
C-UT1
SHEET 6 OF 7