

# PUBLIC WORKS DEPARTMENT



Public Works Week at  
Wapping School

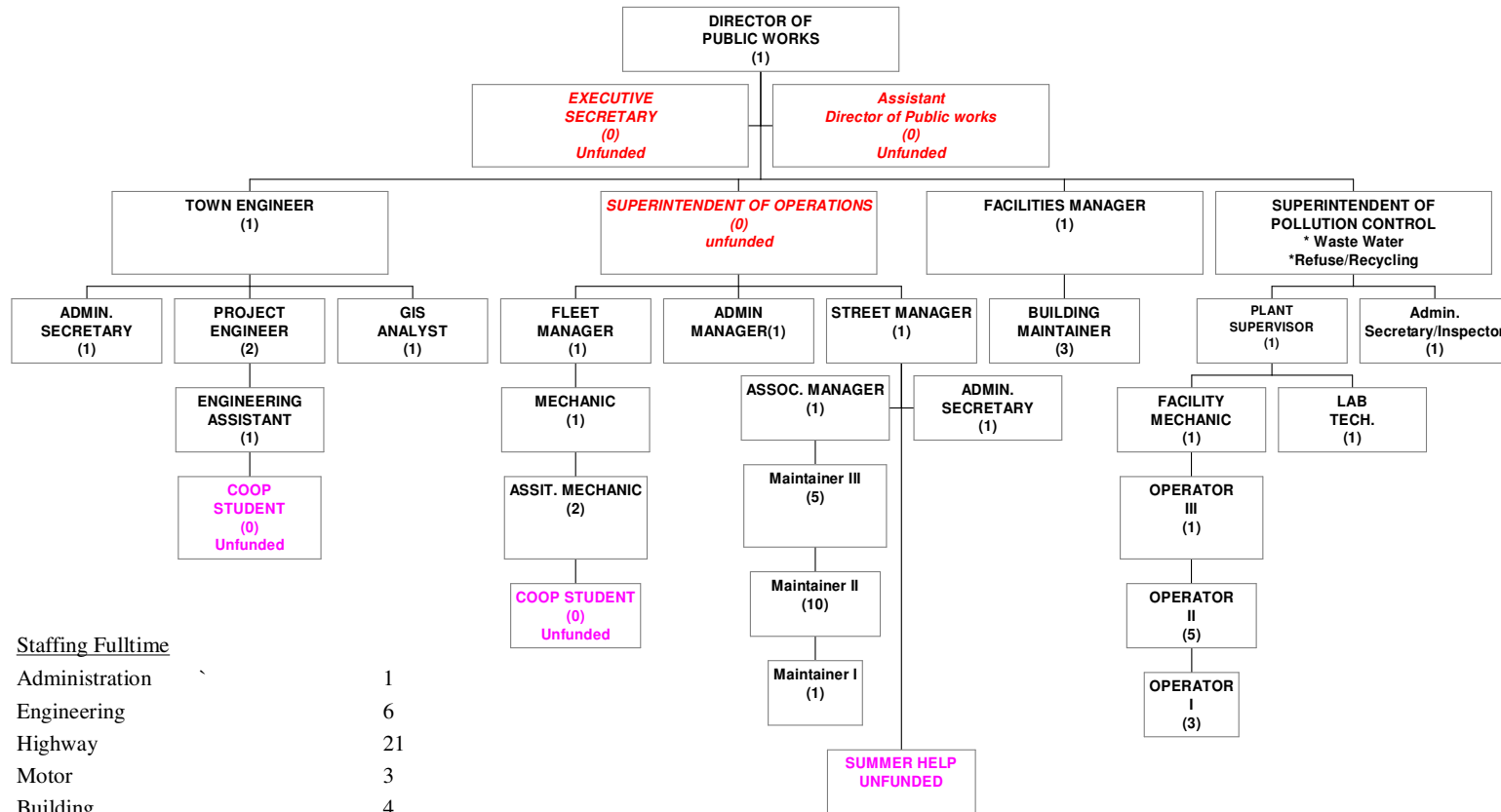
- **Administration**
- **Engineering**
- **Highway Maintenance**
- **Motor Equipment Repair**
- **Building Maintenance**
- **Refuse and Recycling**
- **Pollution Control**

# Public Works Department

➤ The Public Works Department is the most Diverse Department as we :

- Are First Responders - 24/7 ( Hurricanes, Floods, Snow, Alarms ,Call-outs)
- Provide Community Safety (Road, Emergency Events, Trees, Sidewalks, GIS)
- Are Stewards of the Environment ( Storm Water Management, Salting Practices ,Wastewater, Leaf Compost, Energy Conservation.)
- Protect Public Health (Storm water, Wastewater, Haz Waste, Refuse/Recycling, Dead Animal Pickup)
- Maintain the Infrastructure (Roads, Drainage, Sewers, Sidewalks, Buildings)
- Are Facilitators of Economic Development (Engineering, GIS, Sewers)
- Provide Support to **All Departments** ( Building needs, Vehicle Maint.)
- Provide Services to **All Residents** (Refuse/Recycling, Snow, Road, Emergency Response)

## DEPARTMENT OF PUBLIC WORKS 2015



### Staffing Fulltime

Administration	1
Engineering	6
Highway	21
Motor	3
Building	4
Pollution Control	14
Refuse & Recycling	1
Total	50

Plus 3 positions unfunded (red)

Co-op or Summer Help unfunded

# Town Department Comparison

Department	Assistant/Deputy Position	Number of Full Time Employees
<b>Public Works</b>	<b>No</b>	<b>50</b>
Police	Yes	51
Recreation	Yes	18
Finance	Yes	5
Assessor	Yes	3
IT	Yes	5
Fire Marshal	Yes	1
Planning	No	3
Town Clerk	Yes	3
Tax Collector	Yes	3
Registrars	Yes	4
Building	Yes	3
Health	No	1
Human Services	No	9

# Administration

## ➤ Major Core Responsibilities:

- Emergency Response and Recovery Operations
- Providing Leadership and Vision for Staff, Divisions, Community
- Oversee Budgetary, Policy and Procedures Associated with Programs and Projects

## ➤ Major Challenges:

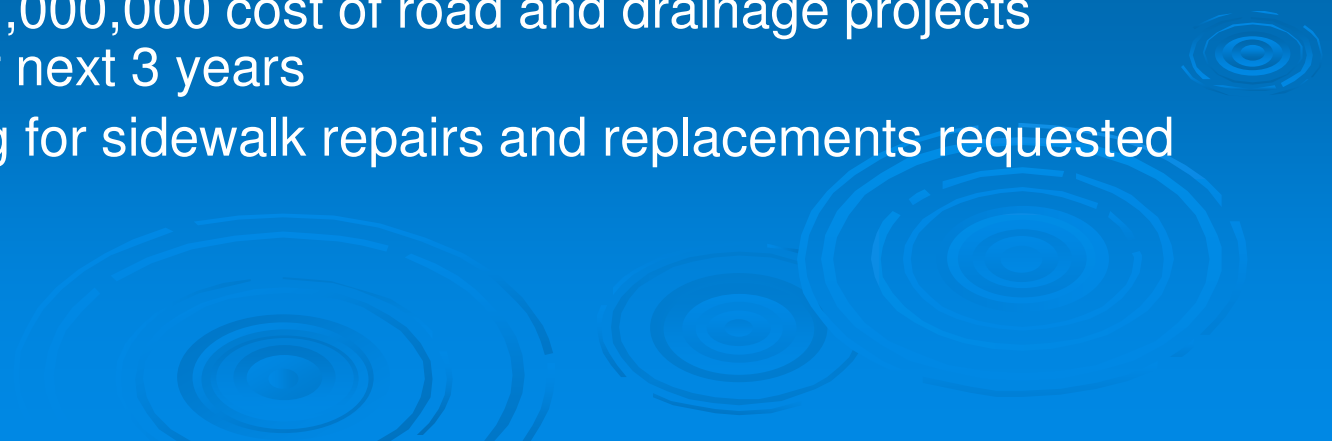
- Current Unfunded Positions-Executive Secretary; Assist. DPW; Supt. of Operations
- Funding of Equipment, Roads and Building Capital Needs
- Additional Programs –Street Lights

# Engineering

## ➤ Major Core Responsibilities:

- Emergency Response and Recovery
- Manage Road & Drainage Improvement Projects. Average \$2,500,000/yr in design and construction costs over past 6 years
- Engineering Design, Reviews, Inspections of new developments

## ➤ Major Challenges:


- Keeping up with Design and Construction of improvements needed for aging infrastructure
  - Estimate \$21,000,000 cost of road and drainage projects planned over next 3 years
  - Need funding for sidewalk repairs and replacements requested by residents
- 

# Highway Maintenance

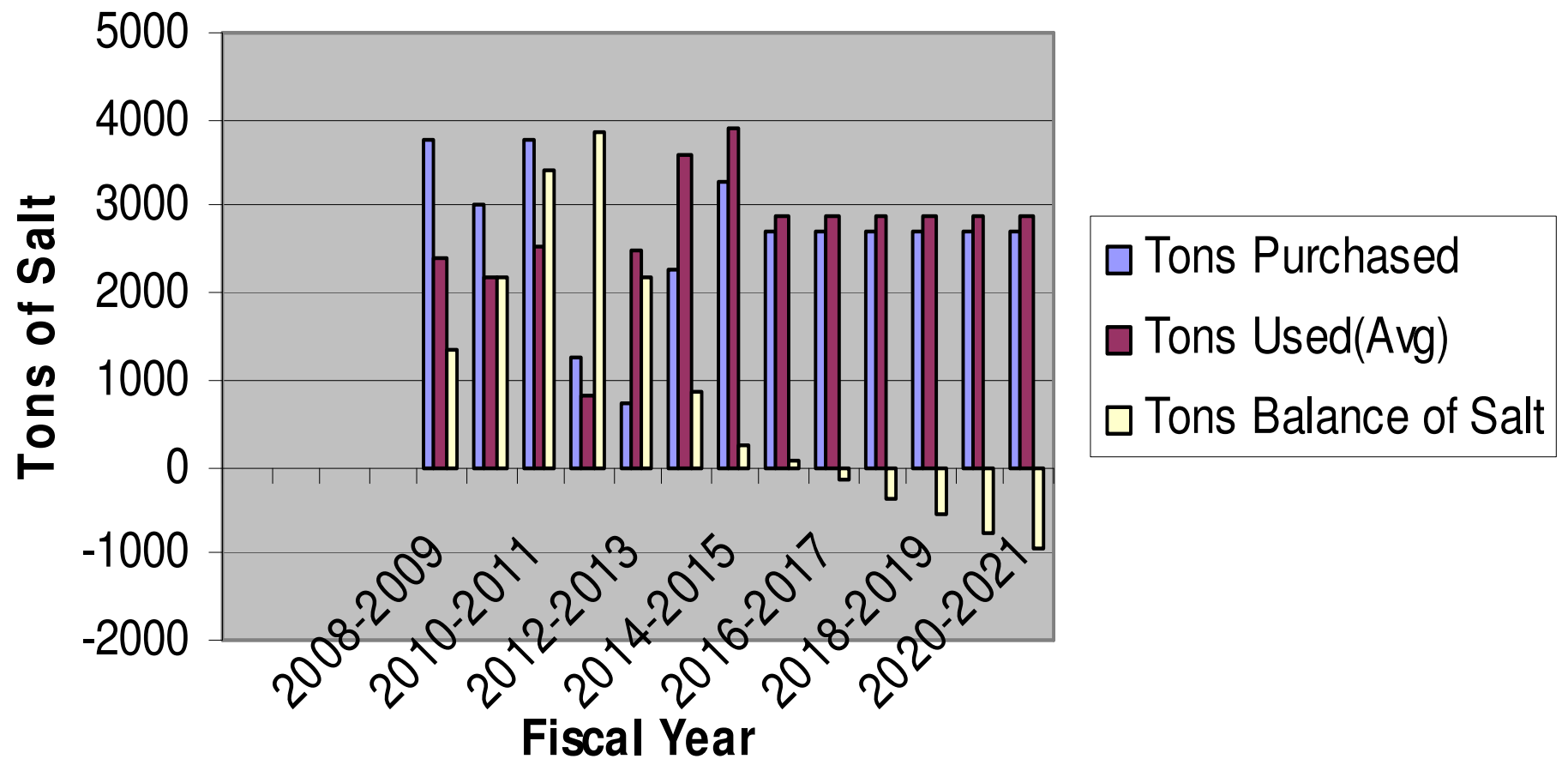
## ➤ Major Core Responsibilities:

- Emergency Response and Recovery Operations
- Maintain 140 Miles of Roads & Associated Infrastructure
- Provide Supports Services to other Departments and Community Events

## ➤ Major Challenges:

- Aging Roads and Storm Systems needing more maintenance
  - Aging/Reliability of Equipment to Accomplish Work
  - No Budget increase for road & drainage maintenance & repairs
  - No Budget increase for Equipment Replacement
  - No Budget increase for winter salt
- 

## Salt Use and Projected Balances





# Fleet Maintenance

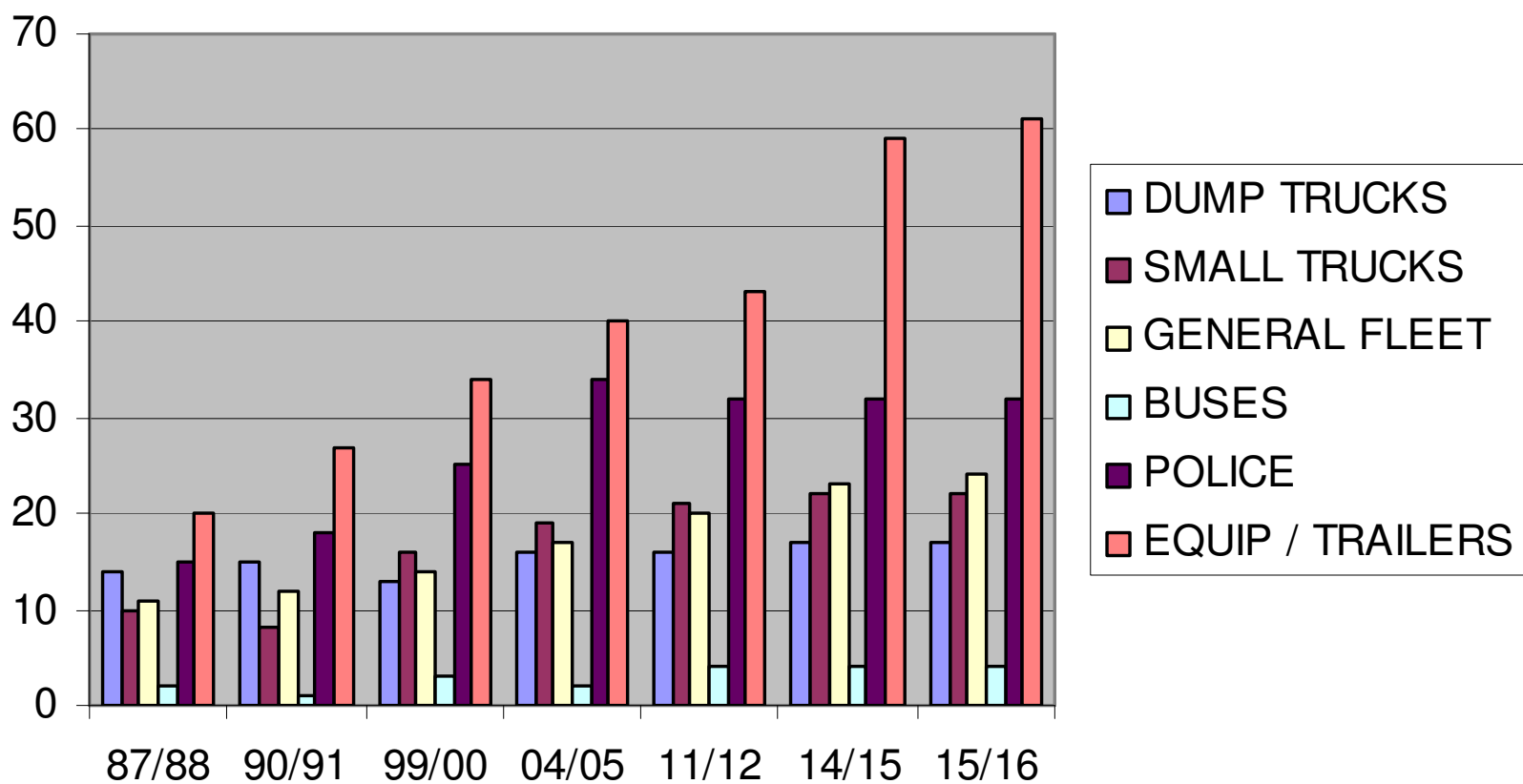
## ➤ Major Core Responsibilities:

- Emergency Response and Recovery
- Maintain 350 pieces equipment Valued at over \$10 million
- Service Police, HS Buses, PW, P&R, FM, Fire small vehicles and all Fleet vehicles

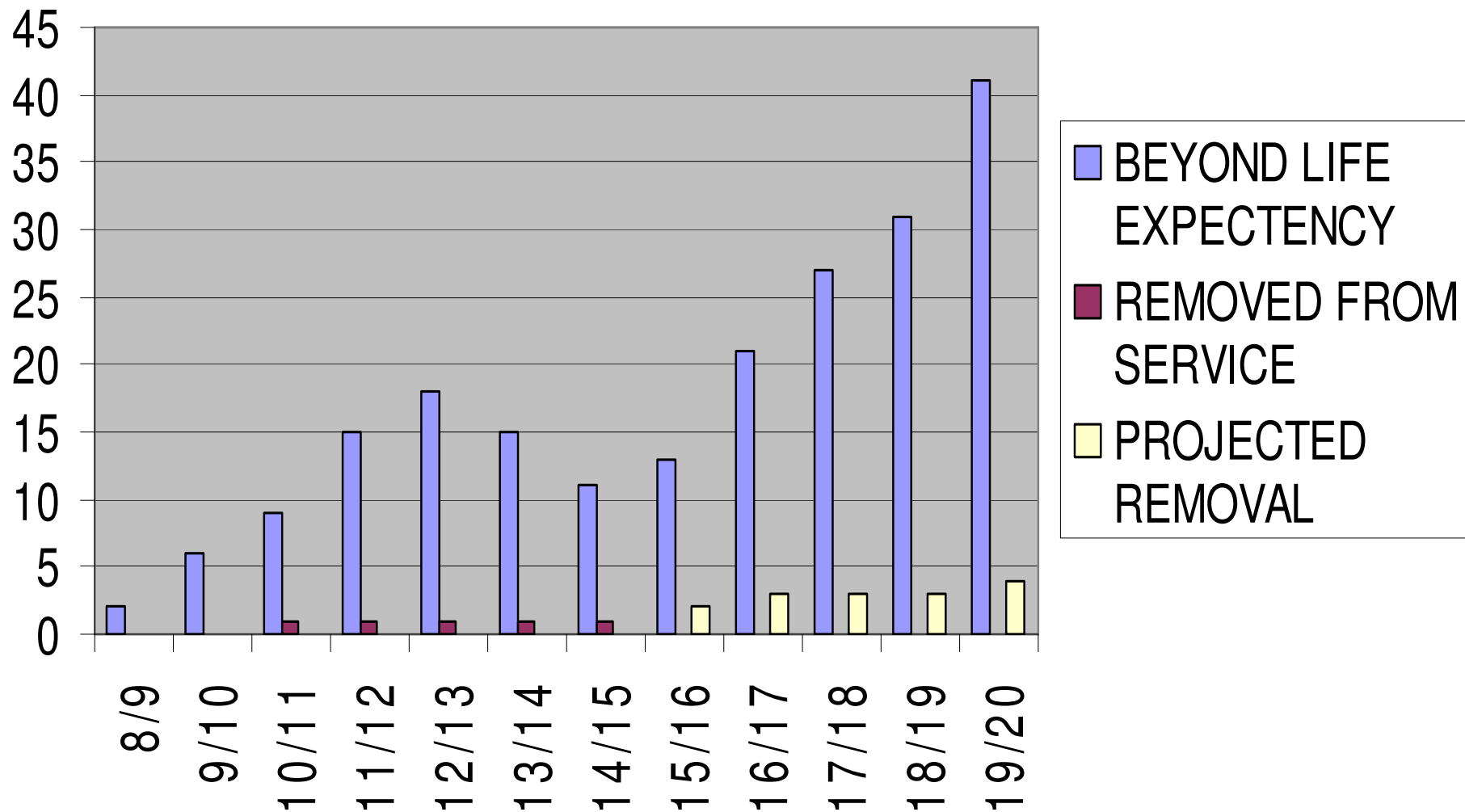
## ➤ Major Challenges:

- Aging Fleet-Equipment Replacement catch-up
- Increase Repairs-Impacts to programs
- Catching up after Reinstatement of Fleet Manager
- Equipment Additions with same Mechanics Staffing Level as 1977

## Equipment Maintained



## Vehicles & Equipment Beyond Life Expectancy Unfunded



# Building Maintenance

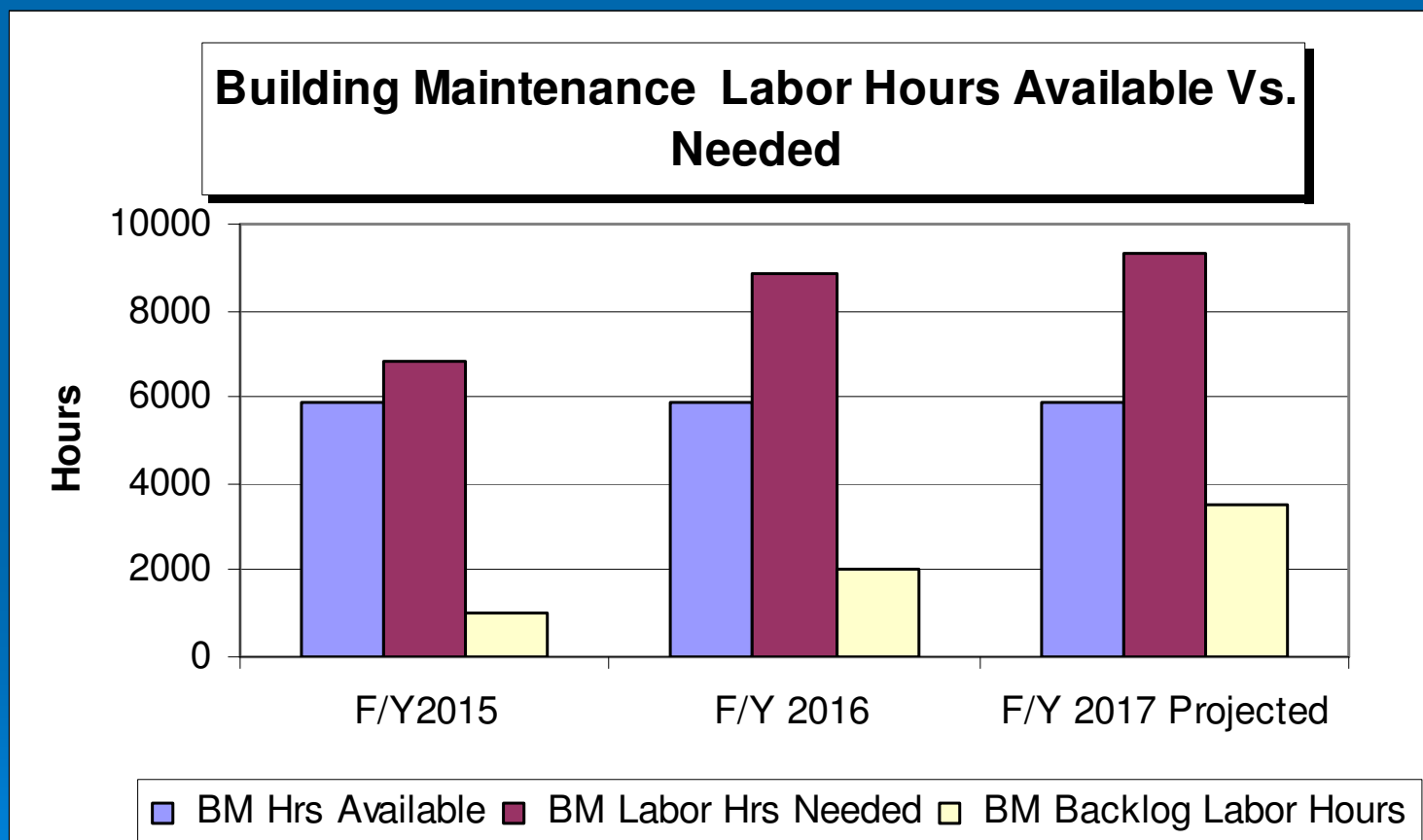
## ➤ Major Core Responsibilities:

- Emergency Response and Recovery Operations
- O & M of all components of 200,000 plus SF spread out over 16 Buildings/structures (HVAC,Electrical,Plumbing,Cleaning & Repairs)
- Servicing daily requests from employees and building users

## ➤ Major Challenges:

- Increased Operating and Maintenance costs of existing and additional spaces such as Fire Stations 1, 2, 3, New EOC
- Additional utility costs of the EOC budgeted
- Increase in utility costs budgeted (electric, water)
- Increased cost of maintaining aging buildings
- Unfunded Asset Management Plan Needs

# Building Maintenance Personnel Needs



# Refuse & Recycling

## ➤ Major Core Responsibilities:

- Curbside Collection/disposal of 8,000 tons from 9,600 homes
- Curbside Collection of 2,600 tons of Recyclables
- Collection of 3 tons Haz Waste & 70 tons Electronics

## ➤ Major Challenges:

- Fate of CRRRA & Future Tipping Fees
- Residents Requests for more services
- Changing State/Federal/Industry Disposal & Recycling Requirements

# Water Pollution Control

## ➤ Core Responsibilities:

- Operation and Maintenance of 130 miles of Sewer Lines, 11 Pump Station, and a Treatment Plant
- Treatment of 900 million Gallons and 1.5 million Pounds of Solids
- Operate Systems in Compliance of State and Federal Permit regulations

## ➤ Major Challenges:

- Planning for the future needs of a complex and widespread system

# Major Challenges

- **Staffing**- to meet daily operational needs and for adequately meeting Emergency Operation/Response needs
- **Road Resurfacing Funding**-to mitigate deterioration of our Roads
- **Equipment Funding**- to insure reliable availability of equipment during normal and emergency operations and reduce repair related costs
- **Asset Management & Capital Project Funding**- to meet inventoried needs and replacement schedules



# Initiatives & Accomplishments

- GIS Dashboards
- Local Road Safety Committee (national highlight)
- Leaf Collection Program
- Successful Road Reconstruction projects
- Water Pollution Control Discharge Standards
- Salting Calibration Training throughout state
- Facebook
- Statewide Leadership ( CTI, CRCOG, GIS)
- Awards( Recycling Rate, ESRI SAG)
- Asked to take over Street Lights Management

# PUBLIC WORKS DEPARTMENT



Blizzard February 2013

- **Administration**
- **Engineering**
- **Highway Maintenance**
- **Motor Equipment Repair**
- **Building Maintenance**
- **Refuse and Recycling**
- **Pollution Control**