

BARBER HILL ROAD

EAST  
IRON PIN

288.64  
to 7606

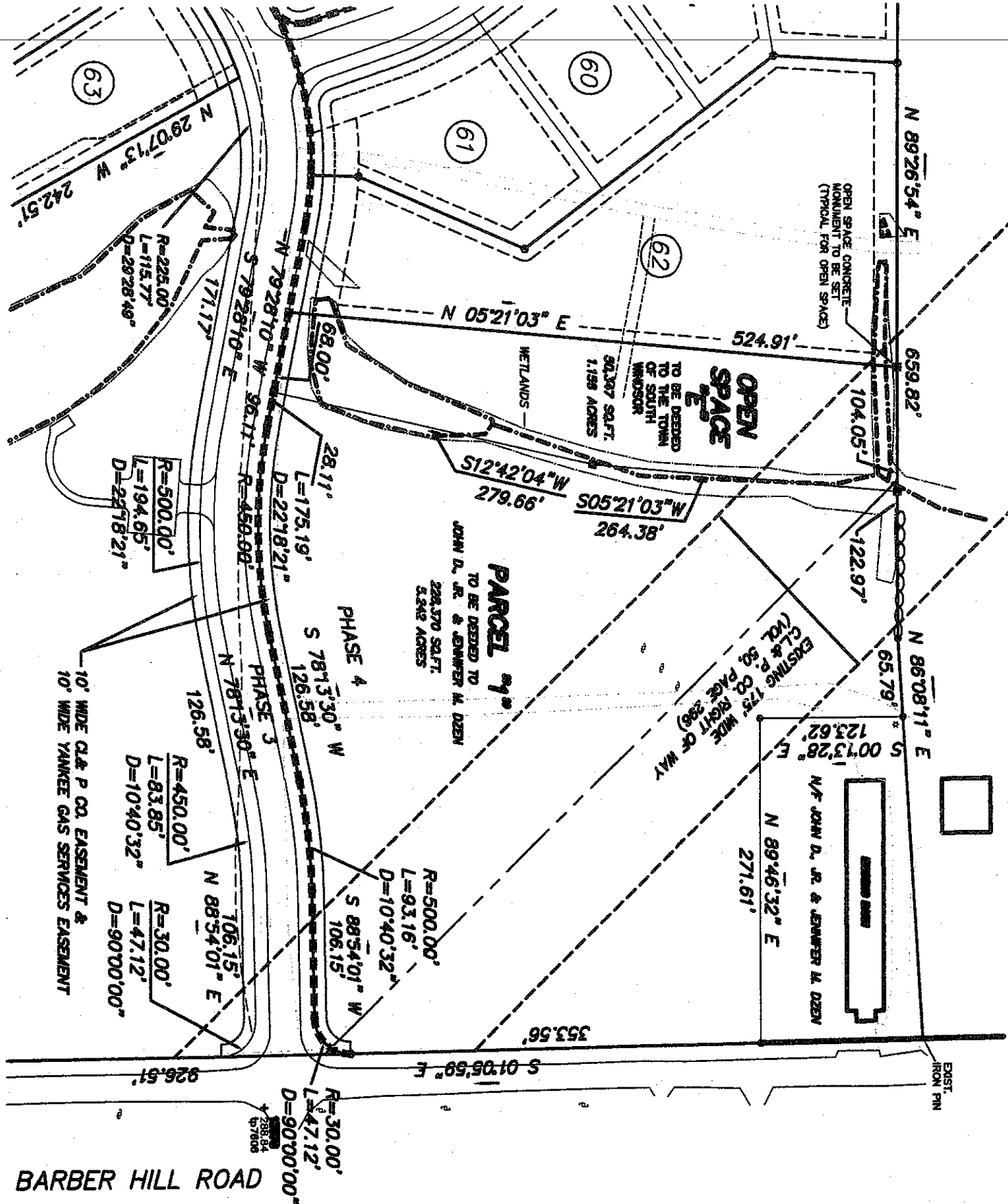
OPEN SPACE CONCRETE  
MONUMENT TO BE SET  
(TYPICAL FOR OPEN SPACE)

OPEN  
SPACE  
TO BE DEEDED  
TO THE TOWN  
OF SOUTHW  
HAMPSHIRE  
90,367 SQ.FT.  
1.198 ACRES

PARCEL #1  
TO BE DEEDED TO  
JOHN D. JR. & JENNIFER M. DEZEN  
228,370 SQ.FT.  
5.242 ACRES

EXISTING 175' WIDE  
CL & P CO. RIGHT OF WAY  
(VOL. 50, PAGE 386)

10' WIDE CL & P CO. EASEMENT &  
10' WIDE YANKEE GAS SERVICES EASEMENT



BARBER HILL ROAD

EAST  
IRON PIN

288.64  
to 7606

OPEN SPACE CONCRETE  
MONUMENT TO BE SET  
(TYPICAL FOR OPEN SPACE)

OPEN  
SPACE  
TO BE DEEDED  
TO THE TOWN  
OF SOUTHW  
HAMPSHIRE  
90,367 SQ.FT.  
1.198 ACRES

PARCEL #1  
TO BE DEEDED TO  
JOHN D. JR. & JENNIFER M. DEZEN  
228,370 SQ.FT.  
5.242 ACRES

EXISTING 175' WIDE  
CL & P CO. RIGHT OF WAY  
(VOL. 50, PAGE 386)

10' WIDE CL & P CO. EASEMENT &  
10' WIDE YANKEE GAS SERVICES EASEMENT