

French Social Circle Building Association, Inc.
 5 John Street
 East Hartford, CT 06108

Dear Madam/Sir:

Re: Appl. #94-077, French Social Circle Resubdivision

We are pleased to advise you that the Planning & Zoning Commission voted on May 10, 1994 to approve the resubdivision of the above-referenced application for a Resubdivision of 1.1 acres located on the south side of Governor's Highway in the Town of South Windsor, Connecticut. The resubdivision was prepared by Design Professionals, Inc., Job No. 93714 and dated February 18, 1994. This approval is subject to the following modifications:

- This approval is for 1 lot, numbered 1.
- Design and construction for this subdivision is subject to the approval of the Town Engineer.
- All lots shall be serviced by the Town of South Windsor sanitary sewer system and are subject to the approval of the State Pollution Control Authority.
- Public water shall be supplied to this subdivision.
- This application is subject to the conditions of approval of the Inland Wetlands Agency/Conservation Commission.
- All easements for conservation purposes, drainage or utilities that may be required in connection with the approval of this subdivision, must be submitted on standardized town easement forms where appropriate, to this Commission. All deeds for open space, public improvements and easements must be submitted prior to closing. For town easements, all deeds must be in accordance with the policy for accepting deeds and must be approved by the Engineering Department and Town Attorney.
- A drainage assessment fee in the amount of \$50 shall be submitted to this Commission.
- No building permits will be issued until all modifications have been completed with, and the final plans have been filed in the Town Clerk's Office.
- Property on only one side shown as W/F Town of South Windsor should show corrected ownership.
- Monuments should be numbered and their coordinates listed.

Blank and white transparent copies of sheets #2 with the above modifications, together with three duplicate copies of the entire set of plans must be submitted to this Commission within 30 days to be stamped and signed. The dates of approval of this Commission must be reproduced on the plans.

After the plans have been signed by the Commission, they will be returned to you for filing in the office of the Town Clerk by August 30, 1994. After filing these plans, a copy of the receipt must be submitted to the Planning Department.

March 24, 1994

French Social Club Building Association, Inc.
 5 John Street
 East Hartford, CT 06109

Dear Madam/Sir:

Re: Appl. #94-077, French Social Club Resubdivision

At the March 23, 1994 regular meeting, the Inland Wetlands Agency/Conservation Commission approved with conditions application #94-077 - IM/CC approval for the creation of a 3.37 acre lot on the south side of Governor's Highway and west of Connecticut Inc., Job No. 93714 and dated February 18, 1994. This approval is subject to the following conditions:

- The blank and white copies of the entire set of plans and this letter reproduced hereon, must be submitted to this Commission. This must be completed within 60 days of approval prior to any construction activity on the site.
- All approvals required must be obtained and submitted prior to any construction activity on the site.
- The symbol for the wetland limits shall be included in the legend information regarding who determined the limits of the wetlands shall be stated on the plan. The location shall be shown on the plan.
- The regulated areas, associated with the three wetland areas adjacent to the lot being created, shall be shown on the plan.
- Who abandoned remains of Hedberry Road shall be identified as such on the plan.

Very truly yours,
 INLAND WETLANDS AGENCY/
 CONSERVATION COMMISSION
 Elizabeth G. Murray
 Elizabeth A. Warren
 Chairman

ESM/gsm
 Town Engineer
 Planning & Zoning Commission
 Design Professionals, Inc.

Very truly yours,
 PLANNING & ZONING COMMISSION
 Thomas A. Murray
 Thomas A. Murray, Chairman

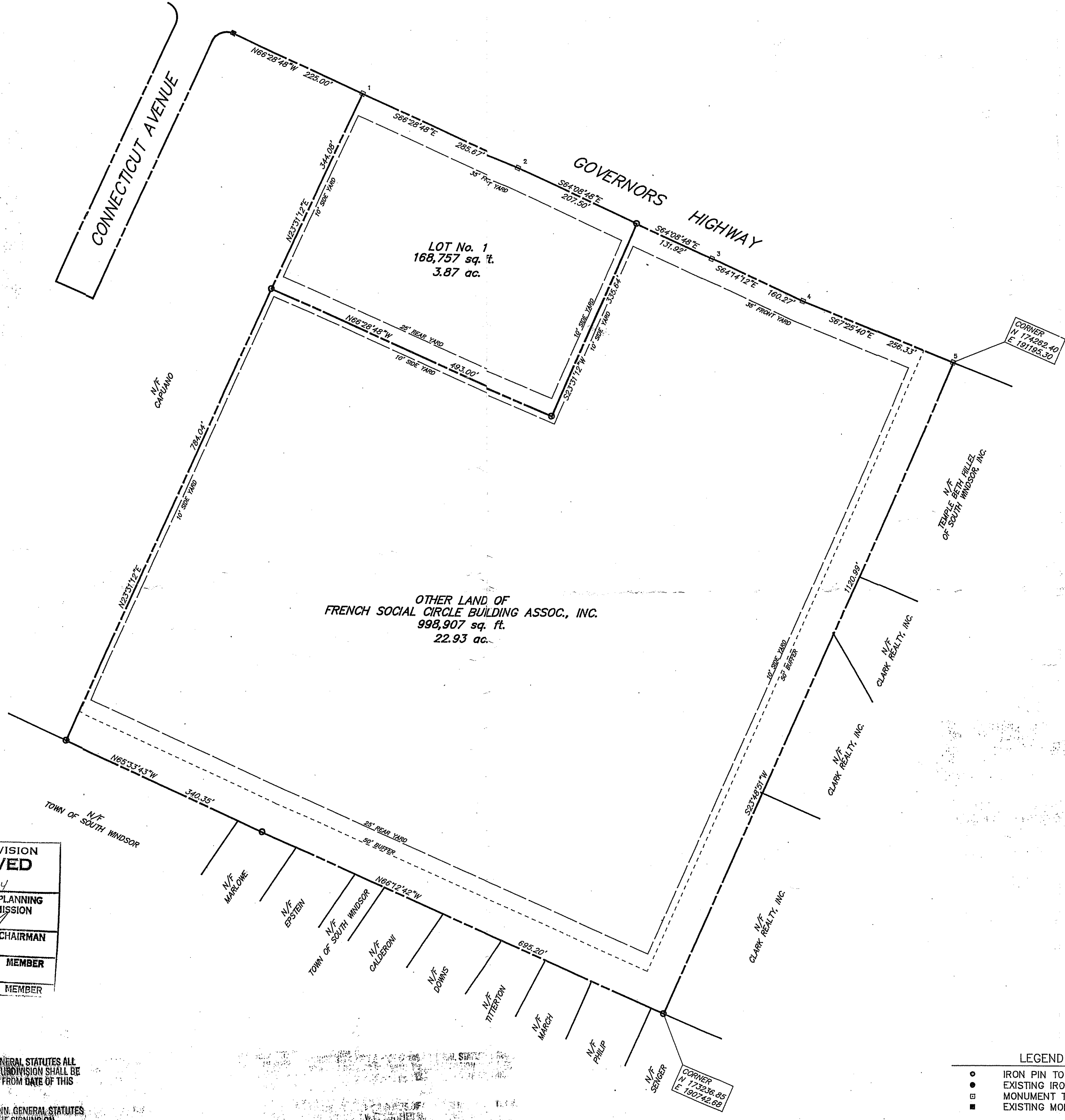
TSM/gsm
 Town Engineer
 Chief Building Official
 Supv. of Pollution Control
 Fire Marshal
 Registrar of Voters
 Design Professionals, Inc.

- NOTES:
- TOTAL PARCEL AREA IS 1,167,867 sq. ft., 26.80 ac.
 - BOUNDARY DETERMINATION IS BASED UPON AN ORIGINAL SURVEY AND AN INDEPENDENT RESURVEY.
 - PARCEL NOT LOCATED IN FLOOD HAZARD ZONE COMMUNITY PANEL No. D90036 0007B.
 - COORDINATES BASED ON M.D.C. DATUM.

THIS SUBDIVISION
 APPROVED
 DATE: 5/10/94
 SOUTH WINDSOR PLANNING
 & ZONING COMMISSION
 Chairman
 Member
 Member

REFERENCE MAP:
 1. MAP ENTITLED "RESUBDIVISION PLAN", PREPARED FOR GTT CORPORATION, AS TRUSTEE OF ONLY PROPERTIES REALTY TRUST, GOVERNORS HIGHWAY, SOUTH WINDSOR, CONNECTICUT, DATED FEB. 10, 1994; SCALE 1"=100'; SHEET 2 OF 3. PREPARED BY DESIGN PROFESSIONALS, INC.

PURSUANT TO TITLE 8 OF CONN. GENERAL STATUTES ALL WORK IN CONNECTION WITH THIS SUBDIVISION SHALL BE COMPLETED WITHIN FIVE (5) YEARS FROM DATE OF THIS APPROVAL.
 5/10/94
 PURSUANT TO SECTION 8-28 OF CONN. GENERAL STATUTES THE APPLICANT WAS NOTIFIED OF THE SIGNING ON [unclear] AND THIS PLAN SHALL BE FILED IN THE OFFICE OF THE TOWN CLERK, TOWN OF SOUTH WINDSOR, CONNECTICUT WITHIN NINETY (90) DAYS OF THAT DATE.



LISTING OF MONUMENT
 COORDINATE POINTS

POINT	NORTHING	EASTING
1	174692.47	190246.88
2	174576.48	190508.92
3	174436.45	190814.27
4	174380.79	190958.61
5	174262.40	191195.30

OFFICIAL MAP
 TOWN CLERK'S OFFICE
 DRAWER NO. 2268-A
 MAP No. 2268-A

cc. for filing 7/28/94
 @ 3:40 p.m. Thomas G. Samuel, A.T.C.

- LEGEND
- IRON PIN TO BE SET
 - EXISTING IRON PIN
 - MONUMENT TO BE SET
 - EXISTING MONUMENT

1. UNLESS OTHERWISE NOTED, EXISTING UTILITY LOCATIONS AS SHOWN ARE BASED ON BEST AVAILABLE INFORMATION. ALL EXISTING UTILITIES SHOULD BE FIELD VERIFIED PRIOR TO CONSTRUCTION. 2. ALL UTILITIES ARE TO BE STAKED IN THE FIELD BY A LICENSED LAND SURVEYOR PRIOR TO CONSTRUCTION. 3. THIS PLAN IS INVALID UNLESS IT BEARS THE IMPRESSION SEAL AND ORIGINAL SIGNATURE OF THE PROFESSIONAL ENGINEER/SURVEYOR.	REVISIONS <table border="1"> <thead> <tr> <th>NO.</th> <th>DATE</th> <th>DESCRIPTION</th> <th>BY</th> </tr> </thead> <tbody> <tr> <td>1</td> <td>5/15/94</td> <td>PER CONDITIONS OF APPROVAL</td> <td>JJP</td> </tr> </tbody> </table>	NO.	DATE	DESCRIPTION	BY	1	5/15/94	PER CONDITIONS OF APPROVAL	JJP	THIS MAP AND SURVEY WERE PREPARED IN ACCORDANCE TO A-2 STANDARDS OF HORIZONTAL ACCURACY AS DEFINED IN THE "RECOMMENDED STANDARDS FOR SURVEYS AND MAPS IN THE STATE OF CONNECTICUT" PREPARED AND ADOPTED BY THE CONNECTICUT ASSOCIATION OF LAND SURVEYORS, INC. SEPTEMBER 24, 1992. TO THE BEST OF MY KNOWLEDGE AND BELIEF THIS MAP IS SUBSTANTIALLY CORRECT AS NOTED HEREON. RICHARD P. MARTEL 12882 LIC. No.	GRAPHIC SCALE (IN FEET) 1 inch = 100 ft.	(203) 291-8755 Design Professionals, inc. civil engineers • planners • surveyors 441c governor's highway, south windsor, connecticut 06074	RESUBDIVISION MAP DESIGN: DRAWN:SRB CHECKED:RPM JOB NO.: 93-714 DATE: 2-18-94 DRAWING NO.: C:\JOB\93714\93714-SD	PLAN PREPARED FOR French Social Circle Building Association, Inc. GOVERNORS HIGHWAY SOUTH WINDSOR CONNECTICUT	SHEET 2 3
	NO.	DATE	DESCRIPTION	BY											
1	5/15/94	PER CONDITIONS OF APPROVAL	JJP												