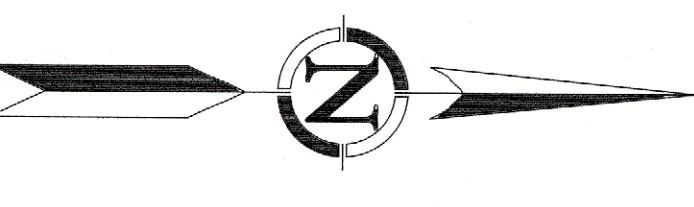


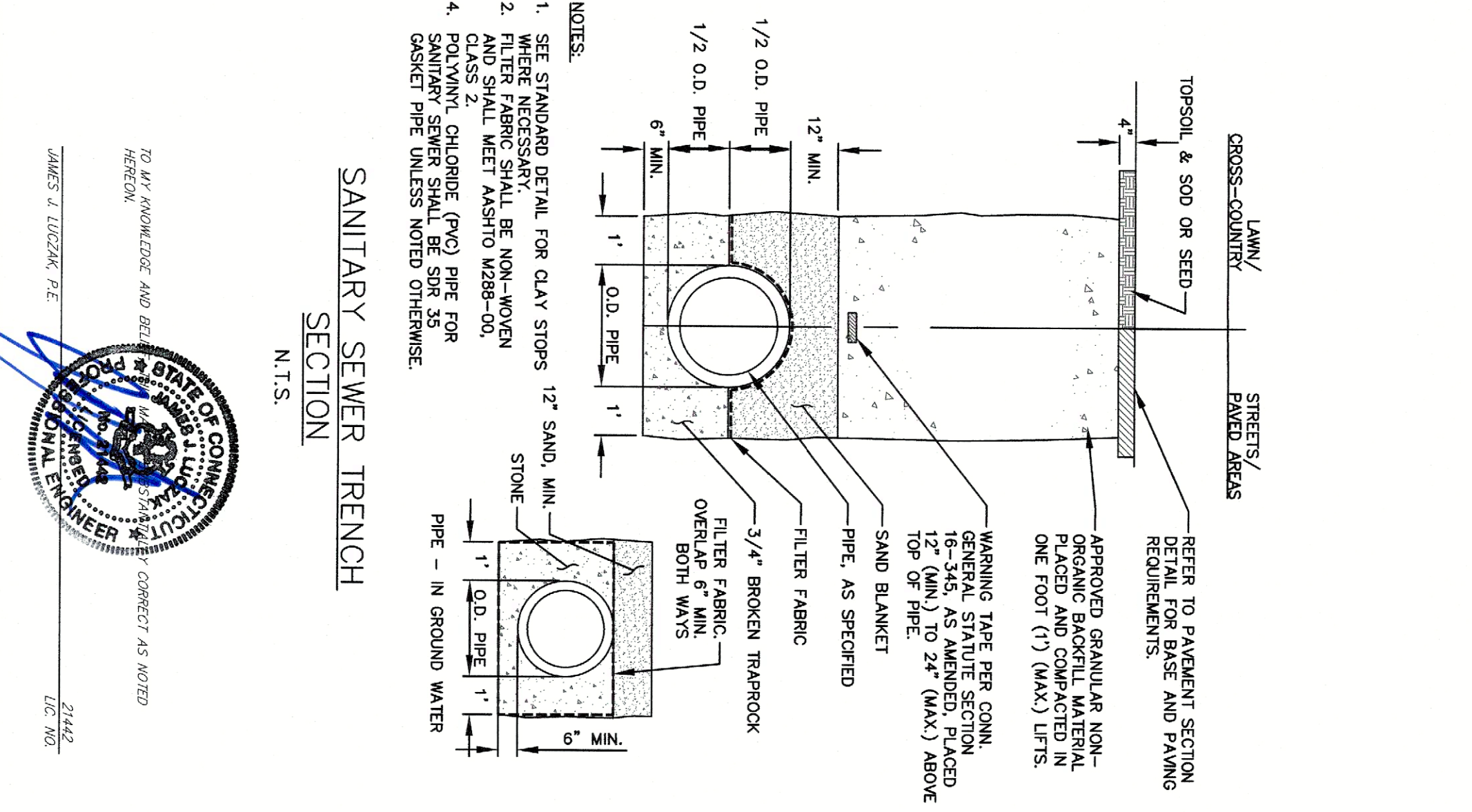
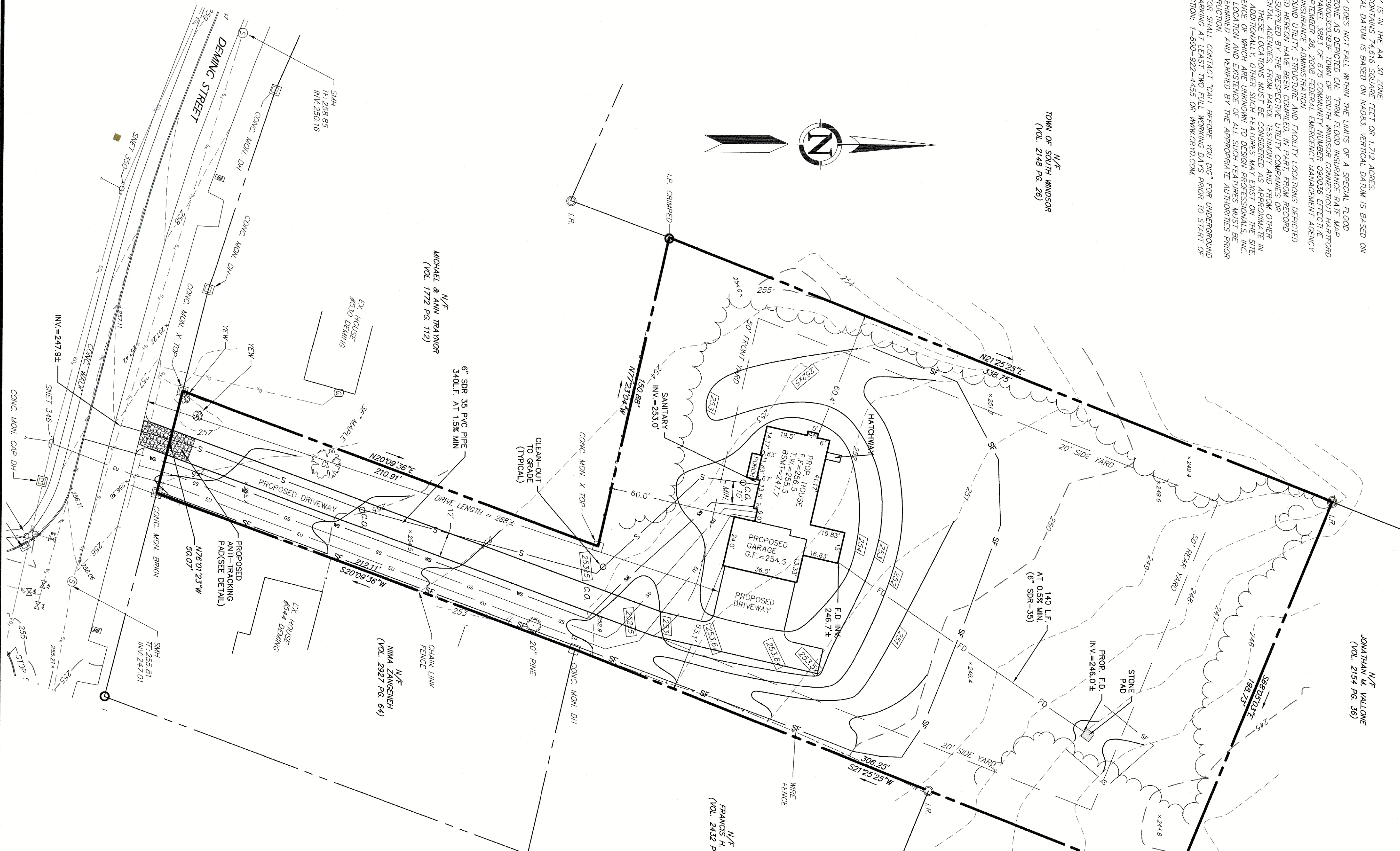
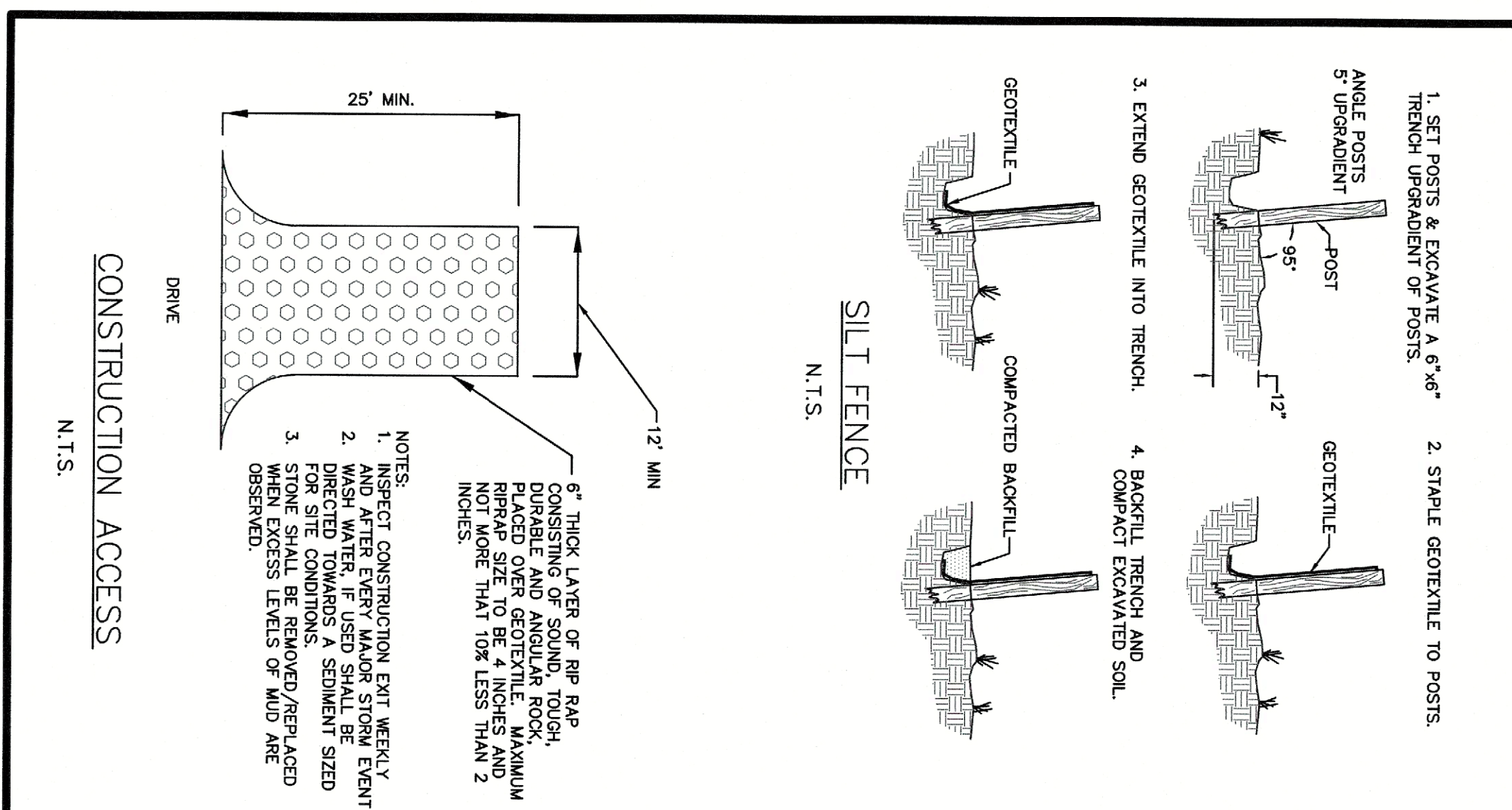
EXISTING	DESCRIPTION
---	OVERHEAD COMM LINES (CABLE, TEL, ETC)
---	APPROX. UNDERGROUND COMMUNICATION LINES
---	APPROX. WATER MAIN
---	APPROX. WATER SERVICE
---	WATER VALVE
---	FIRE HYDRANT
---	GAS VALVE
---	APPROX. GAS MAIN
---	APPROX. GAS SERVICE LINE
---	ELECTRICAL LINES, OVERHEAD
---	APPROX. ELECTRICAL LINES, UNDERGROUND
---	UTILITY POLE
---	UTILITY POLE WITH LIGHT
---	UTILITY POLE WITH TRANSFORMER
---	PROPERTY LINE
---	EASEMENT LINE
---	IRON PIPE
---	IRON ROD
---	MONUMENT
---	ROADS
---	GUARD RAIL
---	SION
---	EDGE OF WATER
---	STONE WALL
---	TREE
---	TREE LINE
---	APPROX. SANITARY SEWER MAIN
---	APPROX. SANITARY SEWER SERVICE LINE
---	SANITARY SEWER MANHOLE
---	SEWER CLEAN OUT
---	APPROX. STORM DRAIN PIPE
---	STORM DRAIN MANHOLE
---	CURB INLET
---	CATCH BASIN
---	TOPOGRAPHY
---	CONTOUR
---	SPOT ELEVATION

LEGEND

- NOTES:**
- PROPERTY IS IN THE AA-30 ZONE.
 - MADEAS CONCRETE SHALL BE 4000 PSI WITH A MINIMUM 8% AIR ENTRAINMENT. CURING SHALL BE AS PER MADEAS TECHNICAL DATA.
 - PROPERTY DOES NOT FALL WITHIN THE LIMITS OF A SPECIAL FLOOD HAZARD STUDY. THE TOWN OF SOUTH WINDSOR COMMUNITY DEVELOPMENT DEPARTMENT HAS REVIEWED THE PROPOSED CONSTRUCTION AND HAS DETERMINED THAT THE PROPOSED CONSTRUCTION DOES NOT CONSTITUTE A SPECIAL FLOOD HAZARD.
 - APPROXIMATE LOCATIONS OF UTILITIES ARE SHOWN FOR INFORMATION ONLY. THE TOWN OF SOUTH WINDSOR HAS BEEN ADVISED OF THE LOCATION OF ALL UTILITIES AND HAS VERIFIED THE LOCATION AND DEPTH OF ALL UTILITIES. THE TOWN OF SOUTH WINDSOR HAS BEEN ADVISED OF THE LOCATION AND DEPTH OF ALL UTILITIES. THE TOWN OF SOUTH WINDSOR HAS BEEN ADVISED OF THE LOCATION AND DEPTH OF ALL UTILITIES.
 - CONTRACTOR SHALL CONTACT "CALL BEFORE YOU DIG" FOR UNDERGROUND UTILITY MARKING AT LEAST TWO FULL WORKING DAYS PRIOR TO START OF CONSTRUCTION. 1-800-922-4455 OR WWW.CBIO.COM



TOWN OF SOUTH WINDSOR
(VOL. 2198 PG. 28)

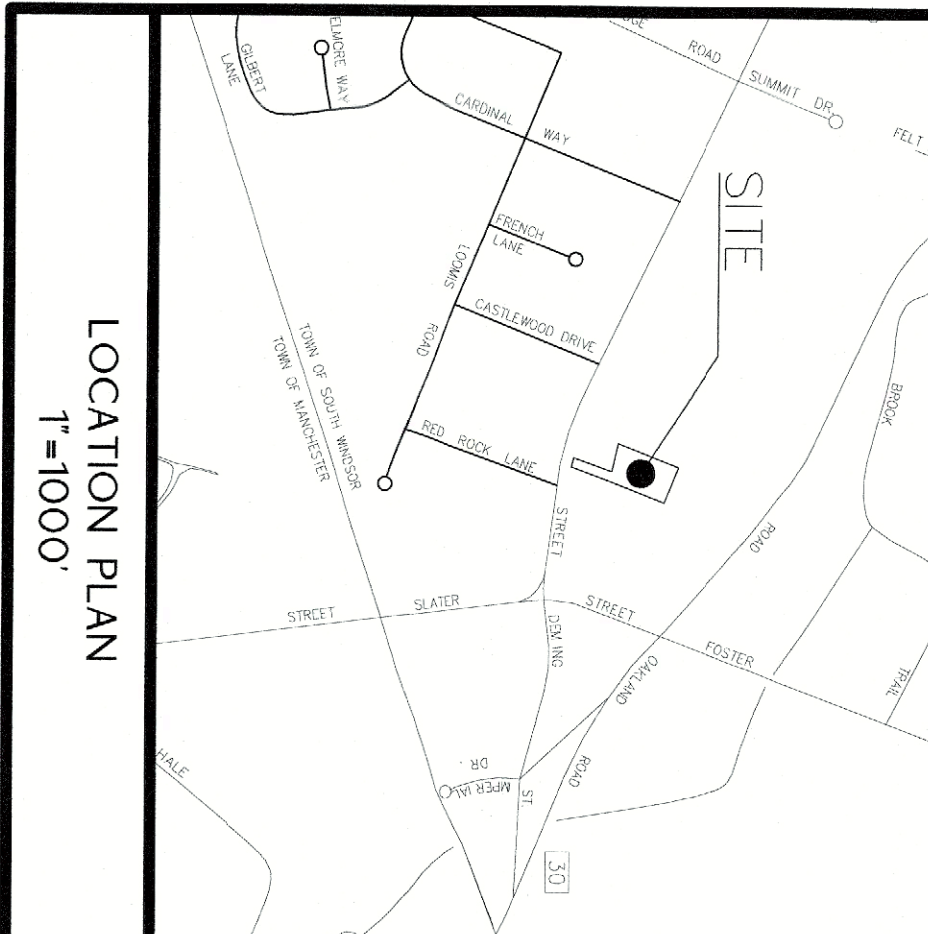


NOTES:

- SEE STANDARD DETAIL FOR CLAY STOPS WHERE NECESSARY.
- FILTER FABRIC SHALL BE NON-WOVEN CLASS 2.
- POLYETHYLENE GLYCOL (PEG) PIPE FOR SANITARY SEWER SHALL BE 36\"/>

MAP REFERENCES:

- RECONSTRUCTION PREPARED FOR GARDNER F. HALLAM, JR., 534 DEMING STREET, SOUTH WINDSOR, CT SCALE: 1\"/>



EROSION & SEDIMENT CONTROL NOTES:

ALL EROSION & SEDIMENT CONTROL MEASURES TO BE CONSTRUCTED AS DETAIL AND SPECIFIED IN THE CONNECTICUT GUIDELINES FOR SOIL EROSION AND SEDIMENT CONTROL, JANUARY 2002 AS AMENDED.

ALL EROSION & SEDIMENT CONTROL MEASURES SHALL BE INSTALLED PRIOR TO ANY CONSTRUCTION. PROPERTY MAINTAINED DURING CONSTRUCTION AND REMAIN IN PLACE UNTIL ALL DISTURBED AREAS HAVE BEEN PROPERLY STABILIZED. AFTER INSTALLATION ADDRESS FIELD CONSTRUCTION MEASURES. ADDITIONAL MEASURES MAY BE REQUIRED TO PROTECT ADJACENT AREAS AS PROVIDED BY THE TOWN OF SOUTH WINDSOR OR THE TOWN ENGINEER.

THE SMALLEST PRACTICAL AREA OF LAND SHOULD BE EXPOSED. THE EXPOSURE SHOULD BE THE SHORTEST PERIOD OF TIME. WHEN NECESSARY TEMPORARY VEGETATION SHOULD BE PLANTED TO PROTECT EXPOSED AREAS. RURAL VEGETATION SHOULD BE RETAINED AND PROTECTED. WHENEVER POSSIBLE NATURAL VEGETATION SHOULD BE MAINTAINED.

THE STOCKPILING OF BUILDING MATERIALS SHALL BE OUTSIDE THE AREA OF DISTURBANCE.

SEEDING PREPARATION: ONE GRAVE AND ONE SOIL TO REMOVE ANY STONES LARGER THAN 2 INCHES. INSTALL AND NEEDED BROKEN STONES TO PROTECT EXPOSED AREAS FROM WATER EROSION. APPLY LUMSTONE AT A RATE OF TWO TONS PER ACRE OR 90 POUNDS PER 1000 SQUARE FEET. FERTILIZE WITH 10-10-10 AT A RATE OF 11 POUNDS PER 100 SQUARE FEET. WORK LIME AND FERTILIZER INTO THE SOIL TO A DEPTH OF FOUR INCHES.

SEED APPLICATION: APPLY SHADE TOLERANT GRASS MIXTURE BY HAND, CYCLONE OR SPREADER. SEED SHALL BE APPLIED AT A RATE OF 15 LBS PER 1000 SQUARE FEET. BETWEEN AUGUST 15 AND SEPTEMBER 15 SEEDING SHALL BE DONE IN ONE PASS. THESE TIMES, REPEAT MULCHING PROCEDURE UNTIL SEED CAN BE DONE.

ESTABLISH PERMANENT VEGETATION USING A SEED MIXTURE OF:

- SEEDING MIXTURE TYPE 1
- SEEDING MIXTURE TYPE 2
- SEEDING MIXTURE TYPE 3

APPROXIMATELY TWO TO THREE INCHES.

THE RECOMMENDED DATES FOR SEEDING ARE APRIL 1 THROUGH JUNE 1 AND AUGUST 15 THROUGH SEPTEMBER 1.

MULCHING: IMMEDIATELY FOLLOWING SEEDING, MULCH THE SEEDS SURFACE WITH STRAW OR HAY AT A RATE OF 1.5 TO 2 TONS PER ACRE. MULCH SHALL BE SPREAD BY HAND OR WITH A MULCH BLOWER. FINISH MULCH INTO SOIL SURFACE APPROXIMATELY TWO TO THREE INCHES.

<p>IMPROVEMENT LOCATION SURVEY - PROPOSED</p> <p>SCALE: 0' 15' 30' 60'</p>	<p>NO. DATE</p> <p>1 10-12-23</p> <p>2 10-17-23</p>	<p>BY</p> <p>BDC</p> <p>BDC</p>	<p>REVISIONS</p> <p>Sanitary Sewer Lateral</p> <p>FOOTING DRAIN OUTLET PIPE SIZE</p>
	<p>JACQUES CONSTRUCTION</p> <p>534 DEMING STREET SOUTH WINDSOR, CONNECTICUT MAP 39, BLOCK 59, LOT 2</p>		
<p>PROJECT NO. 055</p> <p>DATE: 9/6/23</p> <p>DESIGN BY: 5555</p> <p>DRAWN BY: 5555</p> <p>CHECKED BY: 5555</p>	<p>PREPARED FOR:</p> <p>Jacques Construction, LLC 67 Ridge Road South Windsor, Connecticut 06074</p>	<p>Copyright © 2023 Design Professionals, Inc. - All Rights Reserved</p> <p>21 JEFFREY DRIVE P.O. BOX 1167 SOUTH WINDSOR, CT 06074 TEL: 860-291-8755 FAX: 860-291-8755 WWW.DESIGNPROFESSIONALSINC.COM</p> <p>Design Professionals</p> <p>CIVIL & TRAFFIC ENGINEERS / PLANNERS / SURVEYORS GIS ANALYSTS / LANDSCAPE ARCHITECTS</p>	