

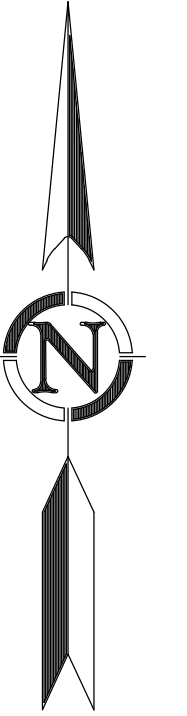
# SEWER SERVICE AREA GOLDEN LAMPSTAND ASSOC 401 KING ST

South Windsor, Connecticut

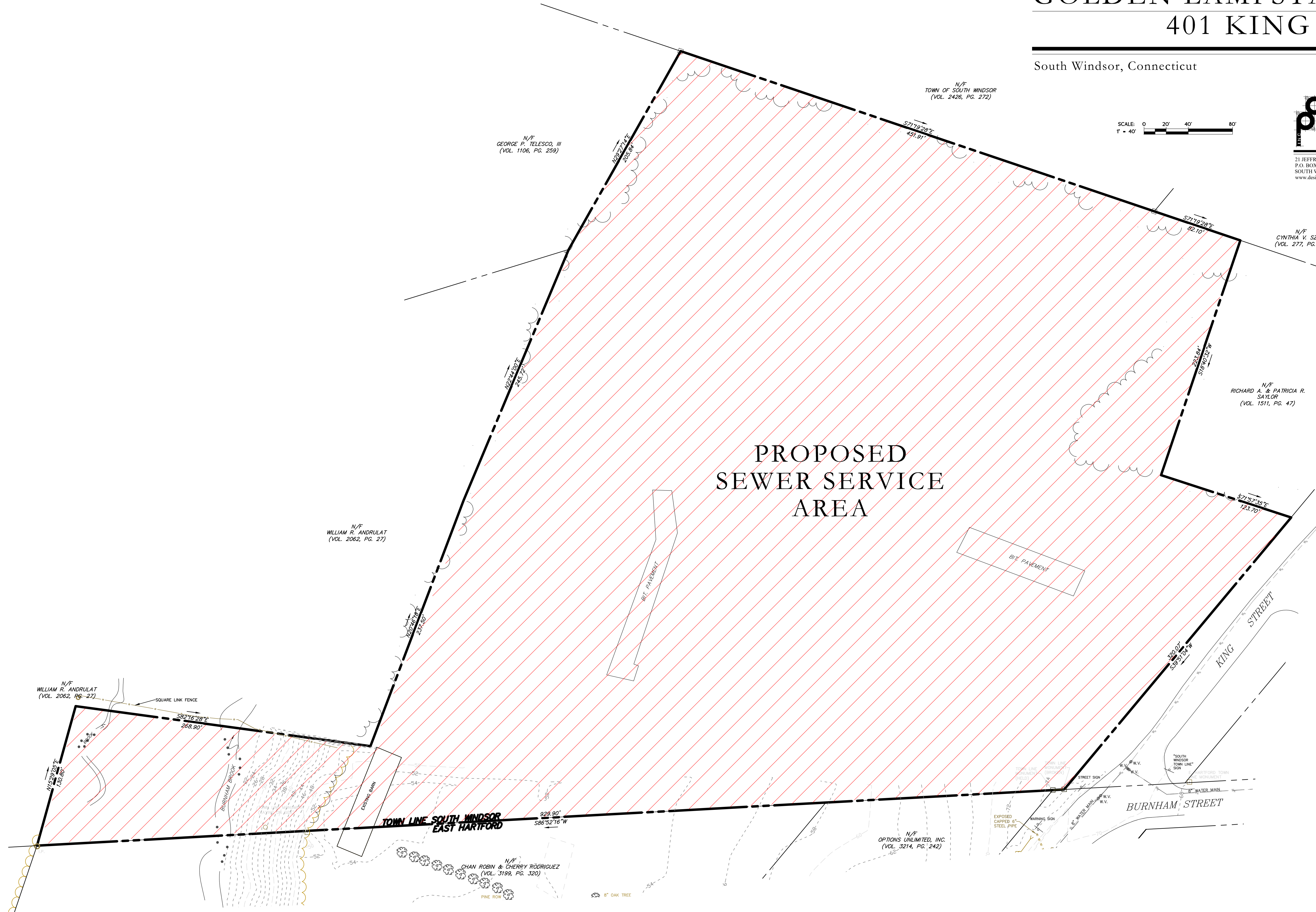
March 26, 2024

SCALE: 0 20' 40' 80'  
1" = 40'

**design professionals**  
CIVIL & TRAFFIC ENGINEERS / LAND SURVEYORS  
PLANNERS / LANDSCAPE ARCHITECTS  
21 JEFFREY DRIVE  
P.O. BOX 1167  
SOUTH WINDSOR, CT 06074  
www.designprofessionalsinc.com  
860-691-8755



PROPOSED  
SEWER SERVICE  
AREA



N/F  
GEORGE P. TELESKO, III  
(VOL. 1106, PG. 259)

N/F  
TOWN OF SOUTH WINDSOR  
(VOL. 2428, PG. 272)

N/F  
CYNTHIA M. SZUKI  
(VOL. 277, PG. 21)

N/F  
RICHARD A. & PATRICIA R.  
SAYLOR  
(VOL. 1511, PG. 47)

N/F  
WILLIAM R. ANDRULAT  
(VOL. 2062, PG. 27)

N/F  
WILLIAM R. ANDRULAT  
(VOL. 2062, PG. 27)

N/F  
CHAN ROBIN & CHERRY RODRIGUEZ  
(VOL. 3199, PG. 320)

N/F  
OPTIONS UNLIMITED, INC.  
(VOL. 3214, PG. 242)