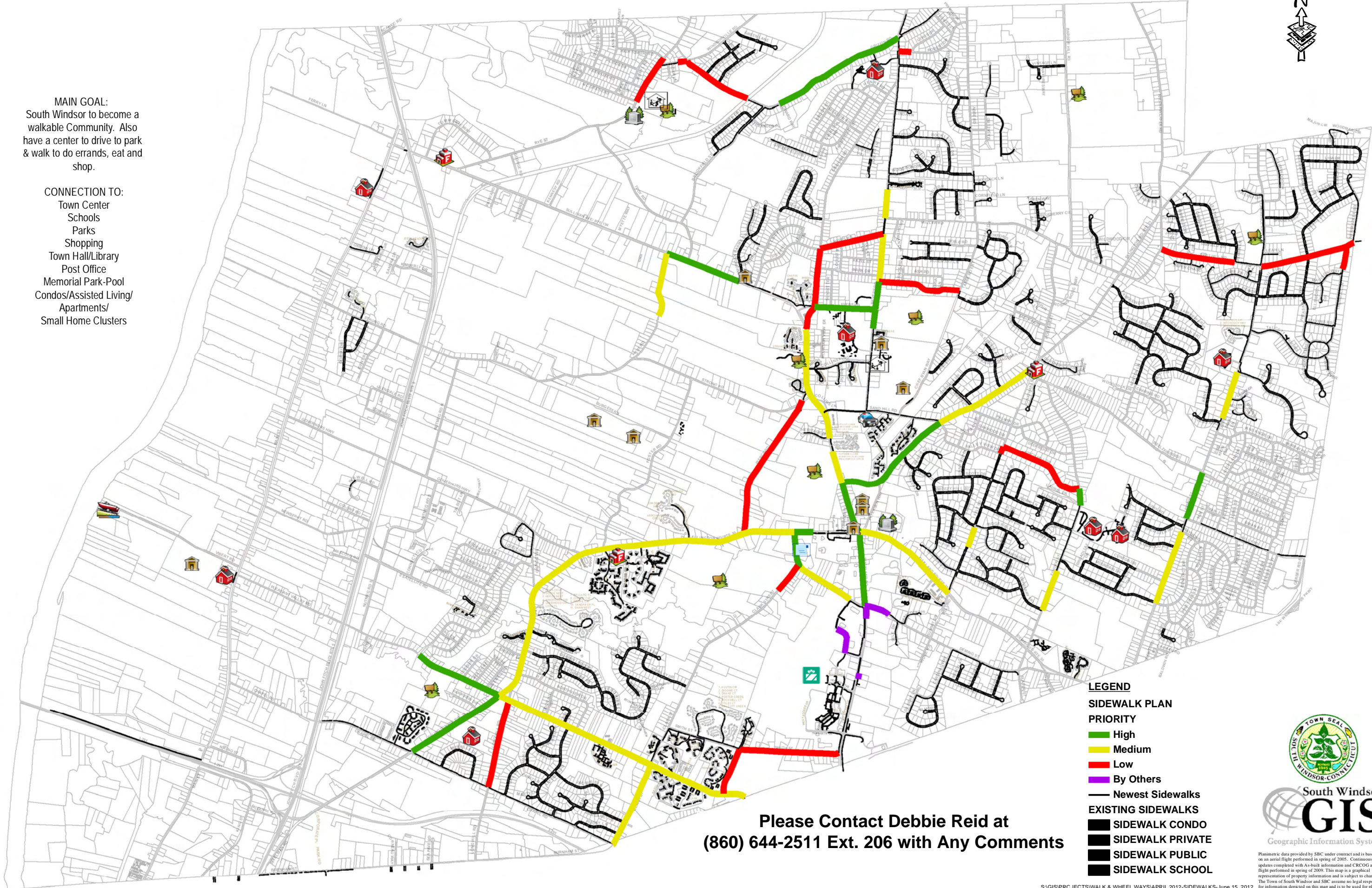


DRAFT TOWN OF SOUTH WINDSOR SIDEWALK PLAN



MAIN GOAL:
South Windsor to become a walkable Community. Also have a center to drive to park & walk to do errands, eat and shop.

CONNECTION TO:
Town Center
Schools
Parks
Shopping
Town Hall/Library
Post Office
Memorial Park-Pool
Condos/Assisted Living/
Apartments/
Small Home Clusters



Please Contact Debbie Reid at
(860) 644-2511 Ext. 206 with Any Comments

- LEGEND**
- SIDEWALK PLAN PRIORITY**
- High
 - Medium
 - Low
 - By Others
- Newest Sidewalks**
- EXISTING SIDEWALKS**
- SIDEWALK CONDO
 - SIDEWALK PRIVATE
 - SIDEWALK PUBLIC
 - SIDEWALK SCHOOL



South Windsor
GIS
Geographic Information System

Planimetric data provided by SBC under contract and is based on an aerial flight performed in spring of 2005. Continuous updates completed with As-Built information and CRCOG aerial flight performed in spring of 2009. This map is a graphical representation of property information and is subject to change. The Town of South Windsor and SBC assume no legal responsibility for information depicted on this map and is to be used for planning purposes only.