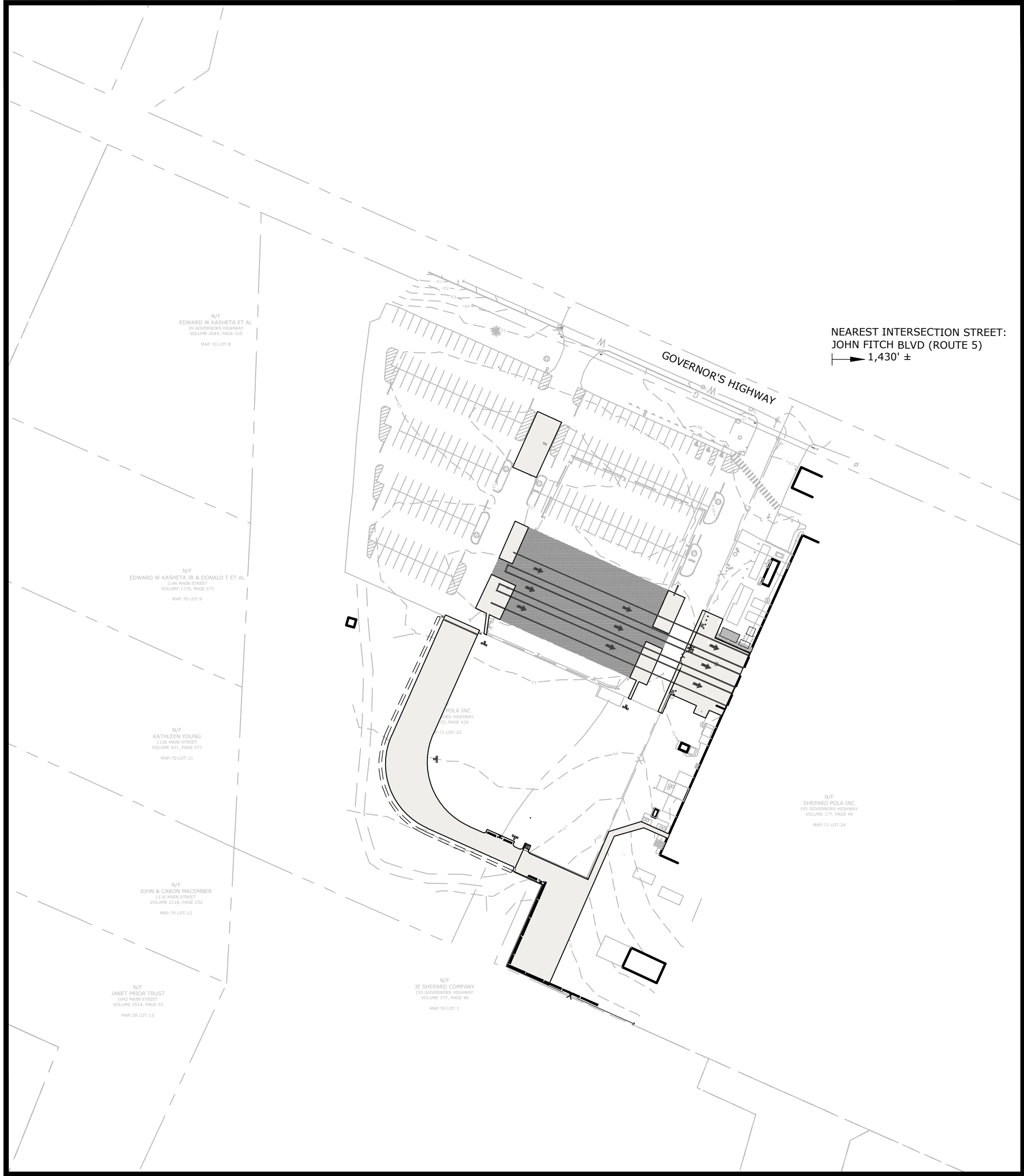


HYAXIOM - A DOOSAN COMPANY

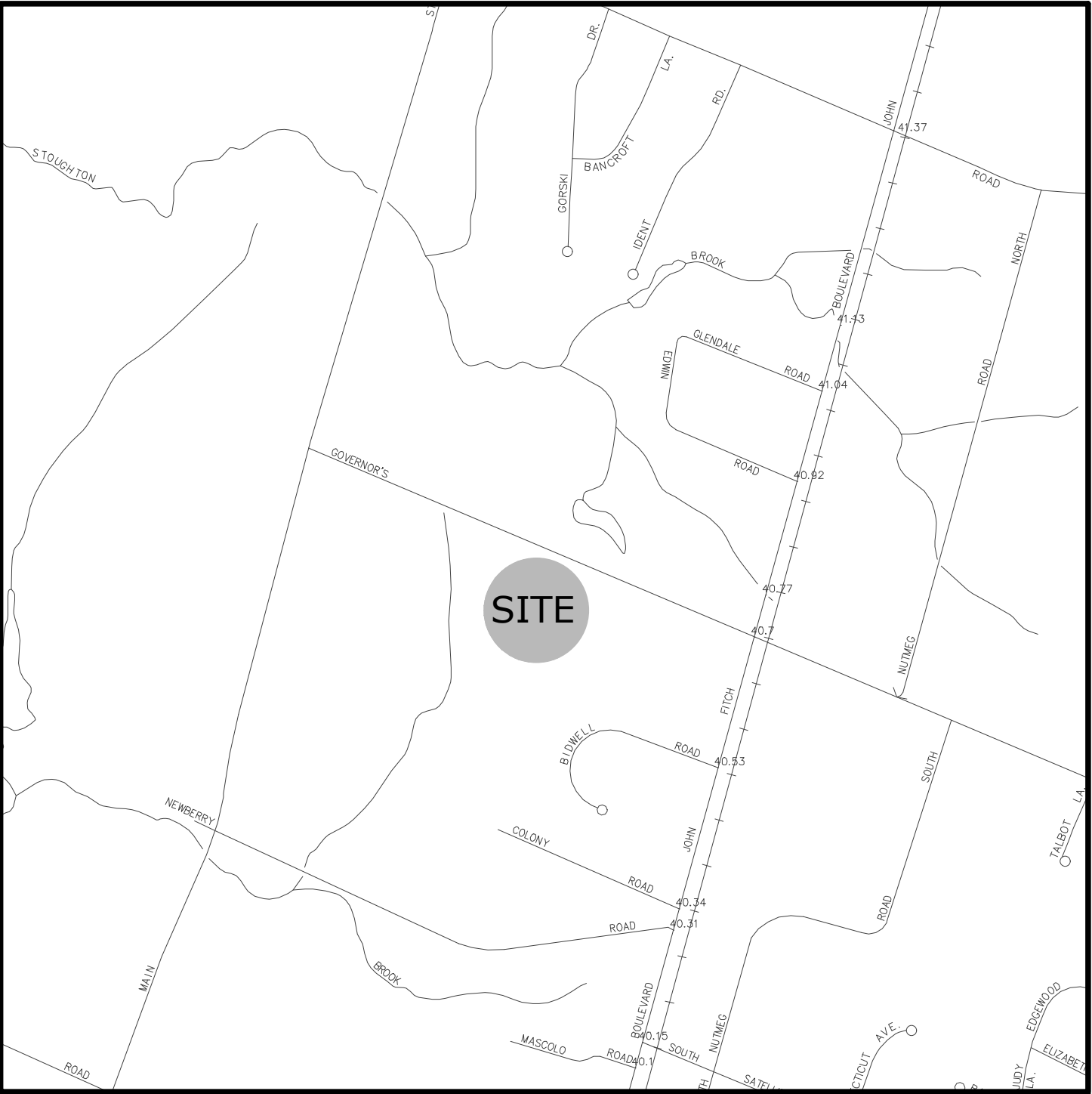
SITE MODIFICATIONS

195 GOVERNOR'S HIGHWAY
SOUTH WINDSOR, CONNECTICUT

JULY 1, 2022
REVISED AUGUST 4, 2022
REVISED AUGUST 23, 2022



KEY MAP
SCALE: 1" = 100'



LOCATION MAP
SCALE: 1" = 1000'

DRAWING INDEX

TITLE	SHEET NO.
COVER SHEET	
TOPOGRAPHIC SURVEY	1 OF 1
SITE PREPARATION AND DEMOLITION PLAN	C1
SITE LAYOUT PLAN	C2
GRADING & DRAINAGE PLAN	C3
UTILITY PLAN	C4
SOIL EROSION & SEDIMENT CONTROL PLAN	C5
COOLING MODULE CONTAINMENT SLAB	C6
SITE DETAILS	C7
STORMWATER & UTILITY DETAILS	C8
SOIL EROSION & SEDIMENT CONTROL DETAILS	C9
GATE EQUIPMENT DETAILS	C10

Applicant:

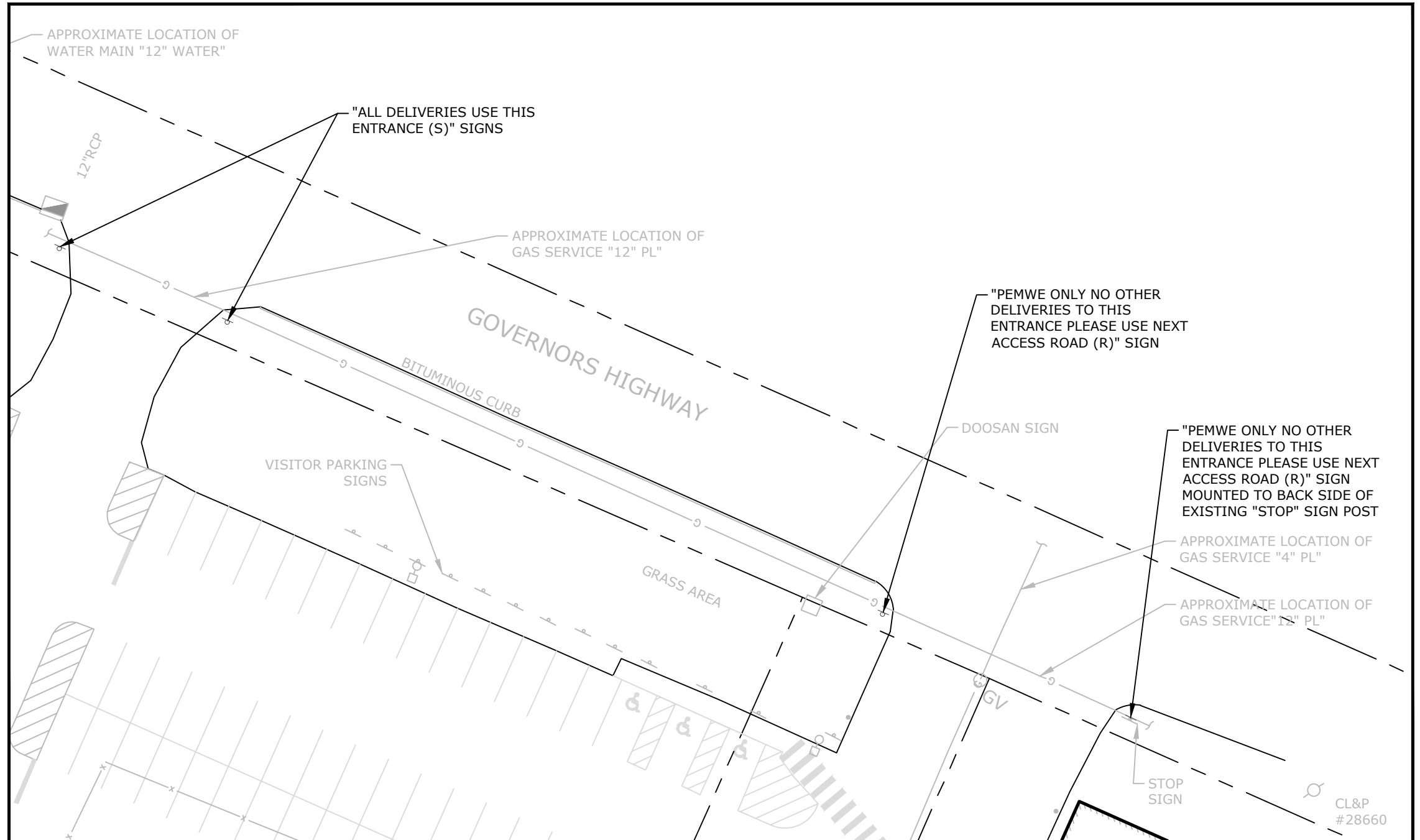
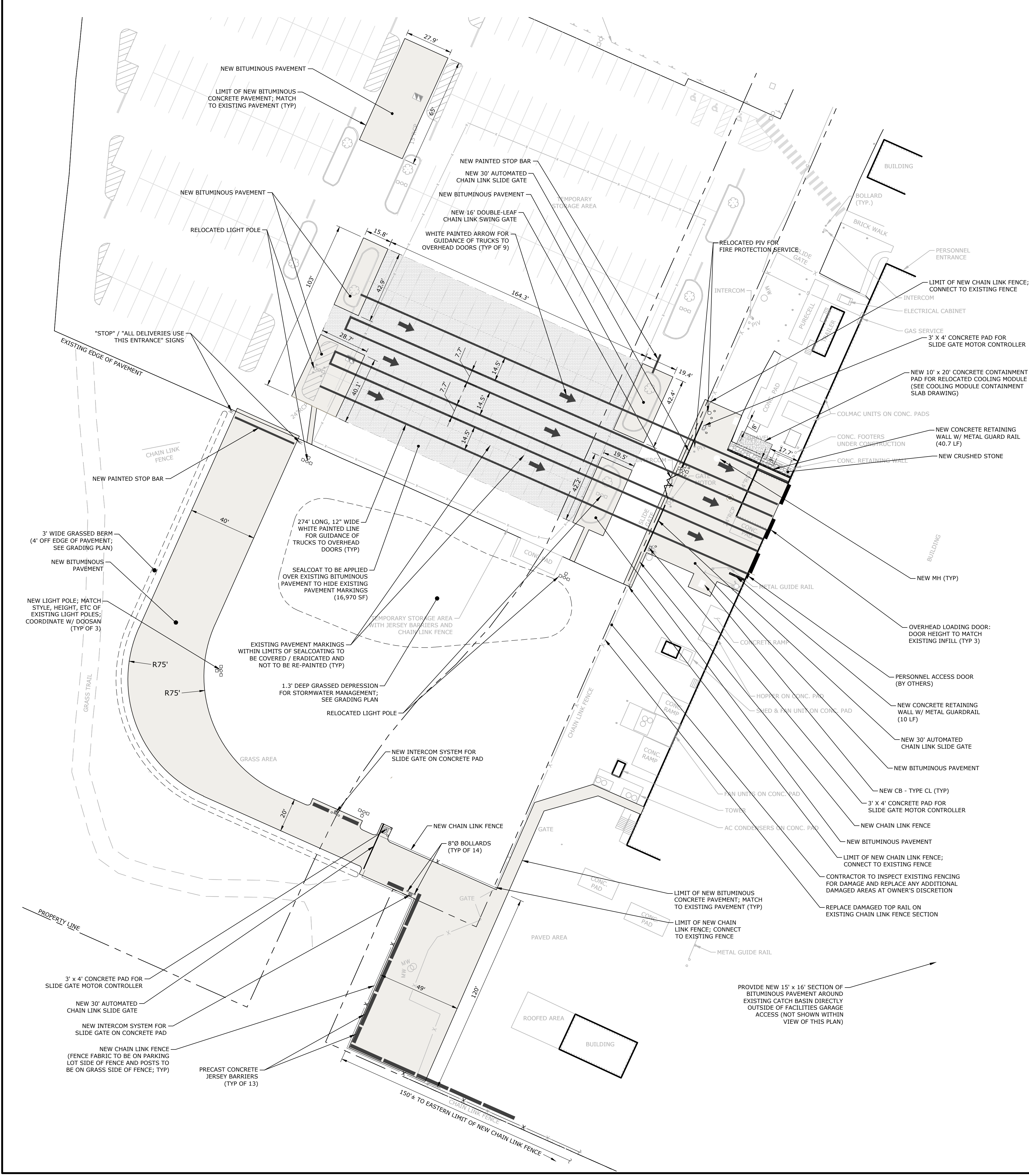
HYAXIOM - A DOOSAN COMPANY
195 GOVERNOR'S HIGHWAY
SOUTH WINDSOR, CT 06074
(860) 680-4406

Prepared By:
Engineer:



Loureiro Engineering Associates, Inc.
100 Northwest Drive • Plainville, Connecticut 06062
Phone: 860-747-6181 • Fax: 860-747-8822
An Employee Owned Company • www.Loureiro.com
Engineering • Construction • EH&S • Energy
Waste • Facility Services • Laboratory





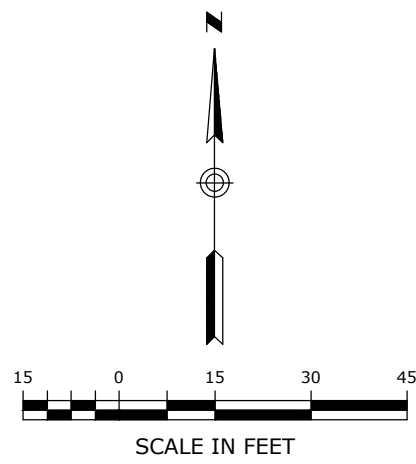
DRIVE ACCESS SIGNAGE
SCALE: 1"=30'

GENERAL NOTES - SITE LAYOUT:

- SURVEY BASE INFORMATION IS BASED ON TOPOGRAPHICAL SURVEY PERFORMED BY LOUREIRO ENGINEERING ASSOCIATES ON MAY 23, 2021.
- THE SITE CONTRACTOR SHALL REVIEW THE SITE GRADES AND FEATURES TO ENSURE THAT THE PROPOSED WORK IS CONSISTENT WITH THE EXISTING CONDITIONS AS PRESENTED ON THE PLANS. IT WILL BE ASSUMED THAT PRIOR TO THE SUBMISSION OF THE BIDS THIS WILL HAVE BEEN DONE AND THAT THE BIDS ACCOUNT FOR ANY DISCREPANCIES. NO CHANGE ORDERS WILL BE PERMITTED FOR VARIATIONS IN EXISTING SITE CONDITIONS AS RELATES TO THIS NOTE AFTER THE BID IS AWARDED.
- PRIOR TO ANY CONSTRUCTION OPERATIONS, THE CONTRACTOR SHALL ESTABLISH ADEQUATE GRADING INFORMATION FOR PROPOSED WORK TO ALLOW FOR THE EVALUATION OF ITS RELATIONSHIP TO EXISTING SITE FEATURES AND VEGETATION. THE CONTRACTOR SHALL NOTIFY THE OWNER'S REPRESENTATIVE IF ANY SURVEY INFORMATION IS INCORRECT. IF REQUIRED, FIELD MODIFICATIONS AS AUTHORIZED BY THE OWNER'S REPRESENTATIVE SHALL BE MADE TO SAVE EXISTING SITE FEATURES OR VEGETATION.
- SITE LAYOUT IS TO BE STAKED IN THE FIELD AND APPROVED BY THE OWNER'S REPRESENTATIVE PRIOR TO THE BEGINNING OF CONSTRUCTION OPERATIONS.
- THE CONTRACTOR IS RESPONSIBLE FOR ANY DAMAGE INSIDE AND OUTSIDE THE CONTRACT LIMIT LINE DUE TO CONSTRUCTION OPERATIONS.
- THE CONTRACTOR IS RESPONSIBLE FOR LOCATING ALL UTILITIES IN THE FIELD BEFORE BEGINNING ANY EXCAVATION. CALL 48 HOURS IN ADVANCE FROM ANYWHERE IN THE STATE OF CONNECTICUT, "CALL BEFORE YOU DIG": 1-800-922-4455.
- THE CONTRACTOR SHALL MAINTAIN ACCESS TO FIRE HYDRANTS AND PIV'S AT ALL TIMES.
- THE CONTRACTOR SHALL COMPLY WITH ALL STATE, LOCAL AND FEDERAL REGULATIONS.
- THE CONTRACTOR SHALL MAINTAIN ACCESS FOR OTHERS TO ALL BUILDINGS AT ALL TIMES.
- DIMENSIONS BETWEEN PAVEMENT MARKINGS FOR GUIDANCE OF TRUCKS TO OVERHEAD DOORS ARE MEASURED FROM CENTER TO CENTER OF 12" WIDE STRIPES.

LEGEND & ABBREVIATIONS

NEW CHAIN LINK FENCE	— x —
NEW CONCRETE WALL W/ GUARDRAIL	—
NEW SEALCOAT ON EXISTING PAVEMENT	
NEW BITUMINOUS PAVEMENT	
NEW CONCRETE	
NEW CRUSHED STONE	
TYP	TYPICAL
LF	LINEAR FEET
SF	SQUARE FEET
PIV	POST INDICATOR VALVE
CL	CURBLESS
CB	CATCH BASIN
MH	MANHOLE
W/	WITH



STAMP

LOUREIRO

Engineering & Construction • Electrical • Energy

Loureiro Engineering Associates, Inc.
100 Northwest Drive • Plainville, Connecticut 06062
An Equal Opportunity Employer • Tel: 860-467-8823
Fax: 860-467-8823
©Loureiro Engineering Associates, Inc.
All rights reserved 2021.

SCALE

1"=30'

CONV. NO.

024DF2.01

DATE

7/1/2022

DRAWN BY

TCG

APPROVED BY

TRW

SITE LAYOUT PLAN

SITE MODIFICATIONS

195 GOVERNOR'S HIGHWAY, SOUTH WINDSOR, CT

HYATCOM - A DOOSAN COMPANY

195 GOVERNOR'S HIGHWAY, SOUTH WINDSOR, CT - PHONE: (860) 680-4406

DRAWING

C2

SHEET NO.

4

NO. OF SHEETS

12

8/23/2022

8/4/2022

REV.

2

1

DATE

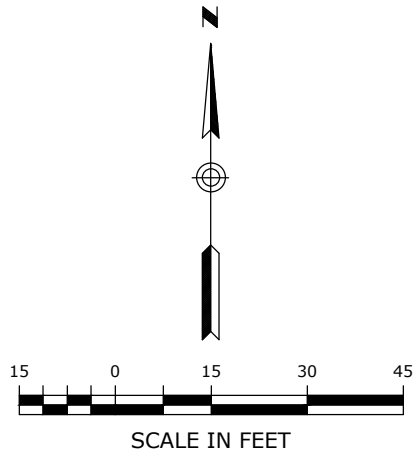
8/23/2022

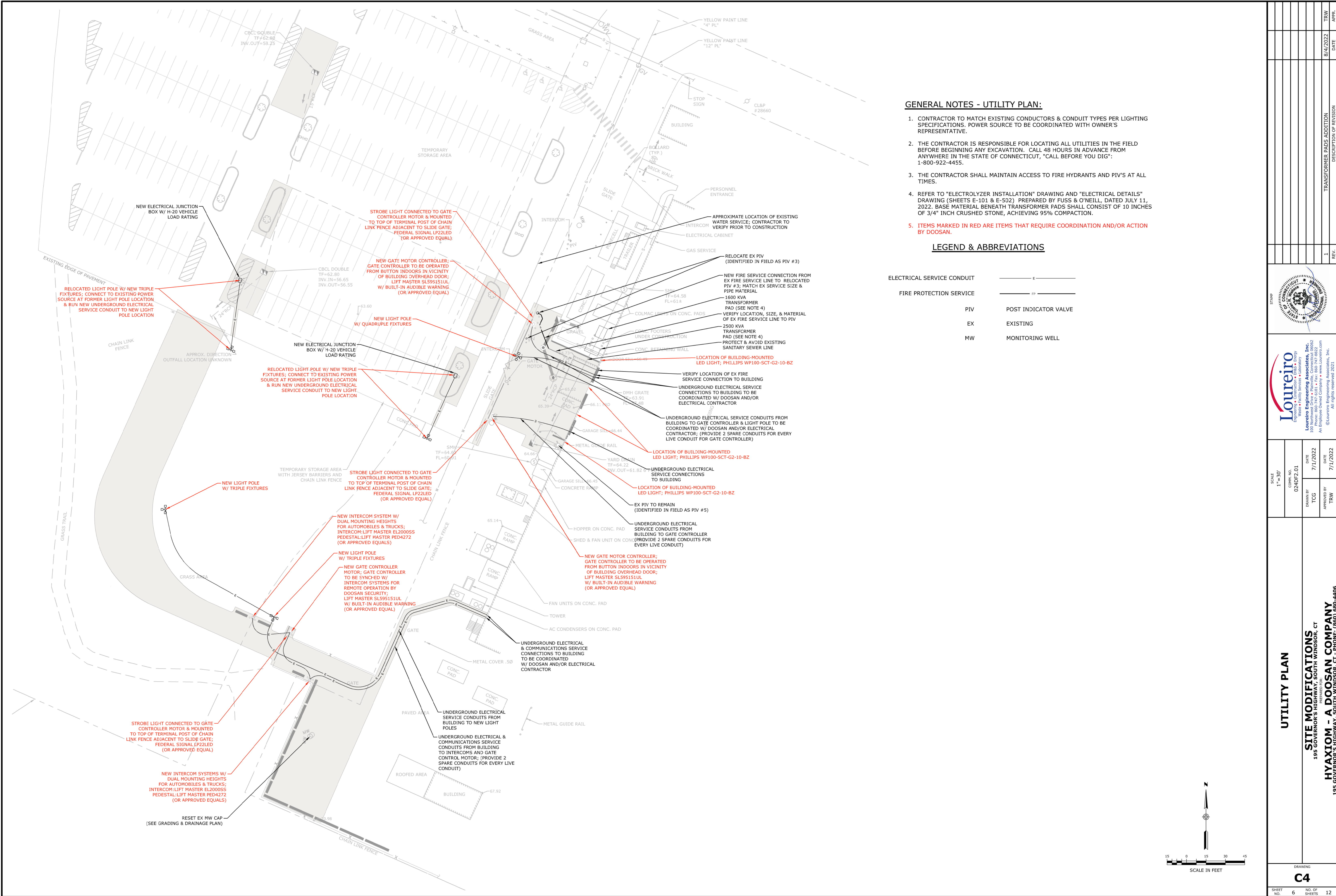
8/4/2022

DESCRIPTION OF REVISION

MODIFIED FOR CONSERVATION REVIEW

TRANSFORMER PADS ADDITION





GENERAL NOTES - UTILITY PLAN:

- CONTRACTOR TO MATCH EXISTING CONDUCTORS & CONDUIT TYPES PER LIGHTING SPECIFICATIONS. POWER SOURCE TO BE COORDINATED WITH OWNER'S REPRESENTATIVE.
- THE CONTRACTOR IS RESPONSIBLE FOR LOCATING ALL UTILITIES IN THE FIELD BEFORE BEGINNING ANY EXCAVATION. CALL 48 HOURS IN ADVANCE FROM ANYWHERE IN THE STATE OF CONNECTICUT, "CALL BEFORE YOU DIG": 1-800-922-4455.
- THE CONTRACTOR SHALL MAINTAIN ACCESS TO FIRE HYDRANTS AND PIV'S AT ALL TIMES.
- REFER TO "ELECTROLYZER INSTALLATION" DRAWING AND "ELECTRICAL DETAILS" DRAWING (SHEETS E-101 & E-502) PREPARED BY FUSS & O'NEILL, DATED JULY 11, 2022. BASE MATERIAL BENEATH TRANSFORMER PADS SHALL CONSIST OF 10 INCHES OF 3/4" INCH CRUSHED STONE, ACHIEVING 95% COMPACTION.
- ITEMS MARKED IN RED ARE ITEMS THAT REQUIRE COORDINATION AND/OR ACTION BY DOOSAN.

LEGEND & ABBREVIATIONS

ELECTRICAL SERVICE CONDUIT	— E —
FIRE PROTECTION SERVICE	— FP —
PIV	POST INDICATOR VALVE
EX	EXISTING
MW	MONITORING WELL

SCALE 1" = 30'		DATE 7/11/2022	
DRAWN BY TCG		DATE 7/11/2022	
APPROVED BY TRW		DATE 7/11/2022	
SITE MODIFICATIONS 195 GOVERNOR'S HIGHWAY SOUTH WINDSOR, CT HYAXIOM - A DOOSAN COMPANY 195 GOVERNOR'S HIGHWAY SOUTH WINDSOR, CT - PHONE: (860) 680-4406			
UTILITY PLAN			
DRAWING C4			
SHEET NO. 6		NO. OF SHEETS 12	
DATE 8/4/2022		REV. 1	
DESCRIPTION OF REVISION TRANSFORMER PADS ADDITION		TRW APPR.	



NOTES:

THE DIMENSIONS SHOWN ON THE PLANS, INCLUDING THE INTENDED DIMENSIONS OF THE WORK, MAY VARY FROM ACTUAL EXISTING CONDITIONS IN THE FIELD. THE CONTRACTOR SHALL TAKE APPROPRIATE MEASUREMENTS TO VERIFY ALL DIMENSIONS SHOWN ON THE DRAWINGS AS WELL AS OTHER DIMENSIONS HE MAY DEEM APPROPRIATE TO FACILITATE THE COMPLETION OF THE WORK. NOTIFY THE ENGINEER OF ANY DISCREPANCIES BETWEEN EXISTING CONDITIONS AND THE CONTRACT DOCUMENTS BEFORE PROCEEDING WITH THAT PORTION OF THE WORK.

UNLESS OTHERWISE INDICATED, LINES ARE PARALLEL OR PERPENDICULAR TO LINE FROM WHICH THEY ARE MEASURED.

DO NOT SCALE THESE DRAWINGS. IF THE DIMENSIONS ARE NOT CONSIDERED ADEQUATE, REQUEST ADDITIONAL INFORMATION FROM THE ENGINEER

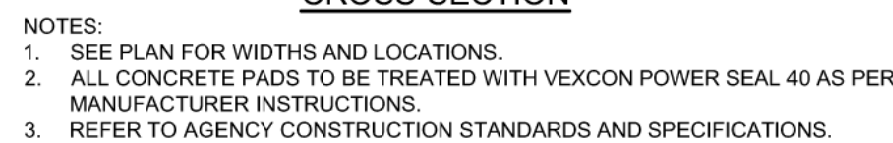
PROTECT UNDISTURBED SUBGRADE, PROVIDE FOR FINAL FINE GRADING, AND COMPACTION OF AREAS AS REQUIRED TO FORM A FIRM, UNIFORM, ACCURATE AND UNYIELDING SUBGRADE AT REQUIRED ELEVATIONS AND TO REQUIRED LINES.

EXISTING SUBGRADE MATERIAL, WHICH WILL NOT READILY COMPACT AS REQUIRED, SHALL BE REMOVED AND REPLACED WITH SATISFACTORY MATERIALS

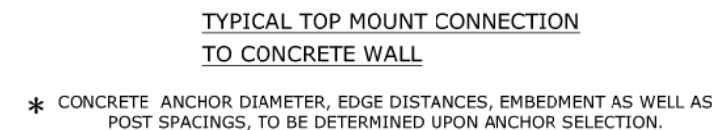
SPECIFICATIONS:

1. CONCRETE
 - A. ASTM C94, 4,500 PSI
 - B. WATER/CEMENT RATIO: MAXIMUM 0.45.
 - C. AIR CONTENT BY VOLUME: 6 PERCENT ± 1 PERCENT, ASTM C231 (PRIMARY METHOD) OR ASTM C173 (SECONDARY METHOD).
 - D. SLUMP: NO LESS THAN 2 INCHES, NOT GREATER THAN 4 INCHES, ASTM C143.
 - E. MASONRY MORTAR/PARGE MOTAR: ASTM C270, TYPE N.
2. REINFORCING STEEL
 - A. DEFORMED STEEL BAR, ASTM A615, GRADE 60, SIZE AS SHOWN.
 - B. BAR SUPPORTS/CHAIRS: STEEL OR PLASTIC, SIZED PER REINFORCING REQUIREMENTS. CMU SHALL NOT BE USED.
 - C. LAP LENGTH: 40D.

SHEET NO.	8	DRAWING	C6
COOLANT MODULE CONTAINMENT SLAB			
<p align="center"> SITE MODIFICATIONS 195 GOVERNOR'S HIGHWAY^A, SOUTH WINDSOR, CT HYAXION - A DOOSAN COMPANY 195 GOVERNOR'S HIGHWAY, SOUTH WINDSOR, CT PH#(860) 480-4406 </p>			
SCALE	AS NOTED		
CONTA. NO.	024DF2.01		
DRAWN BY	DATE		
YCO	7/1/2022		
APPROVED BY	DATE		
TAW	7/1/2022		
<p>Loureiro Engineering Associates, Inc. Environmental • Geotechnical • Laboratory Water • Facility Services • Regulatory</p> <p>100 Phoenix, 1650 Park 747 Office • Fax: 860-747-8832 All rights reserved 2021</p>			
		STAMP	
		TRANSFORMER PADS ADDITION	
		REV.	8/4/2022
		DESCRIPTION OF REVISION	TRW
		DATE	APPR.
		1	



NOT TO SCALE

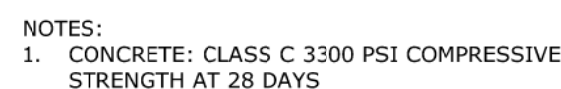


NOT TO SCALE

References: Developed from Thompson Fabricating, LLC Tarrant, AL (website) and ADA/IBC Public Access/OSHA Handrail Details-Nov. 2016



- NOTE:
1. RETAINING WALL TO BE DESIGNED BY STRUCTURAL ENGINEER AS SHOP DRAWING SUBMITTAL.
 2. CONCRETE RETAINING WALLS TO BE UTILIZED ON ALL INTERIOR SITE WALLS.
 3. 4' GUARD FENCE TO BE INSTALLED ANYWHERE WALL IS GREATER THAN 4' (SEE LANDSCAPE PLAN SET FOR DETAILS).



NOT TO SCALE

- Reference: Comm. No. 77SP5.01, Commerce Drive, Fairfield, Ct, Nov. 2015 and 51LA3.01, Farmington Senior Living, Scott Swamp Rd., Farmington, CT, Jan. 2014.

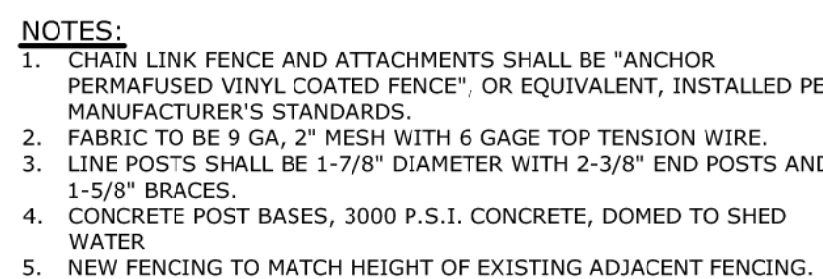


BREAKAWAY SIGN POST DETAIL



NOTE: SIGN POSTS TO CONFORM WITH
DETAILS ON DOT SHEET TR-1208_02.

NOT TO SCALE



NOT TO SCALE



BITUMINOUS CONCRETE PAVING

SITE DETAILS

SITE MODIFICATIONS
195 GOVERNOR'S HIGHWAY, SOUTH WINDSOR, CT
PREPARED FOR:
XIOM - A DOOSAN COMPANY
195 GOVERNOR'S HIGHWAY, SOUTH WINDSOR, CT
J. DOANE, (860) 690-4406

HYAXIOM - A DOOSAN COMPANY
 1000 W. CONVENT ROAD, SOUTH WINDSOR, CT 06094
 PHONE: (860) 680-4400

HYAXIOM - A DOOSAN COMPANY
 1000 W. CONVENT ROAD, SOUTH WINDSOR, CT 06094
 PHONE: (860) 680-4400



NOTE:
ALL SILT FENCING & ALTERNATIVE FILTERS SHALL BE FURNISHED, INSTALLED AND MAINTAINED IN ACCORDANCE WITH 2002 CT GUIDELINES FOR SOIL EROSION AND SEDIMENT CONTROLS, AS AMENDED AND PER MANUFACTURERS INSTRUCTIONS.



COMPOST MULCH SOCK ON PERVIOUS AND IMPERVIOUS SURFACE DETAILS

COMPOST MULCH SOCK ON PERVIOUS AND IMPERVIOUS SURFACE DETAILS

SOIL EROSION & SEDIMENT CONTROL DETAILS

SITE MODIFICATIONS
195 GOVERNOR'S HIGHWAY, SOUTH WINDSOR, CT
PREPARED FOR:
HYAXIOM - A DOOSAN COMPANY
195 GOVERNOR'S HIGHWAY, SOUTH WINDSOR, CT - PHONE: (860) 680-4406

DIFIO
SHWAY, S
PREPARED FOR:

THE MORE

SITE 5 GOVERNANCE

19

[illegible][illegible][illegible]

DRAWING

C9

1	NO. OF SHEETS
---	---------------



CHRISTY®

COVER

Style:	Flush
Material:	Steel Checker Plate
Model:	14" x 20"
Weight:	44 lbs
Options:	Special Markings
Surface:	Skid Resistant & Marked*
Coefficient of Friction:	>0.6 ASTM 1028
Performance:	H20, AASHTO

Cover comes standard with permanent markings for manufacturer, load rating, mod size and manufacturing location.

BODY

Material:	Reinforced Concrete with Steel Frame
Model:	16" x 22"
Weight:	130 lbs
Wall Type:	Straight
Mouseholes:	0
Performance:	H20, AASHTO

COVER OPTIONS

Reader Door*
AMR Opening
Bolt Down Locking
Galvanizing
EMS Marker

LOAD RATING / NOTES



*Reader doors are not to be placed in a roadway.

 WARNING: Cancer and Reproductive Harm - www.P65Warnings.ca.gov

All information contained on this sheet is current at the time of publication.
Oldcastle reserves the right to discontinue or update product information without notice.



oldcastleinfrastructure.com
(800) 735-5566



H2O RATED ELECTRICAL JUNCTION BOX DETAIL
NOT TO SCALE



FEDERAL SIGNAL LP22LED STROBE LIGHT
NOT TO SCALE

[illegible]