
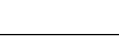
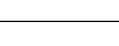
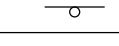
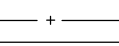
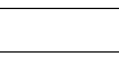

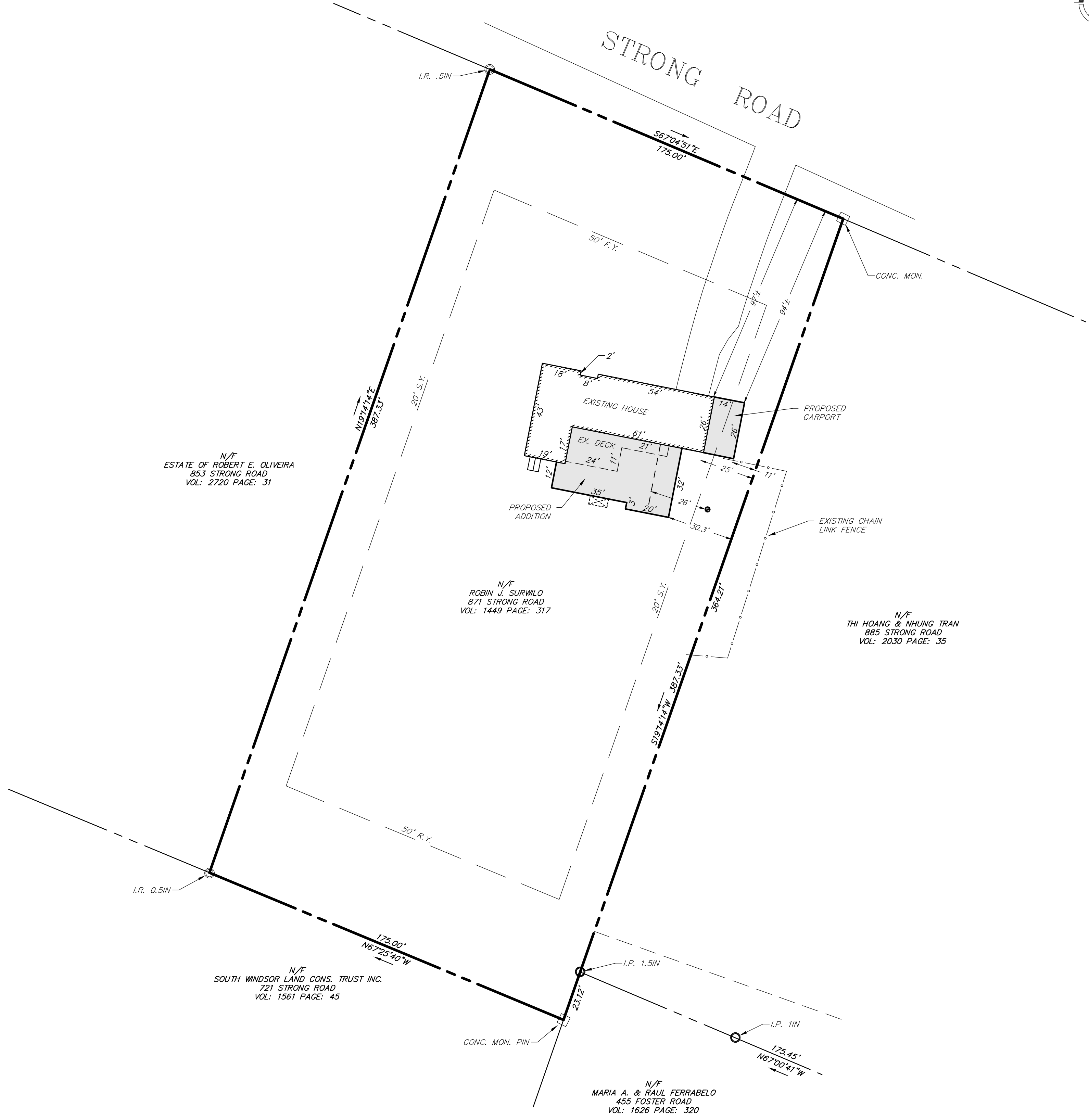


LEGEND	
EXISTING	DESCRIPTION
	BORINGS
	BORING / TEST PIT LOCATION
	COMMUNICATION
	OVERHEAD COMM. LINES (CABLE, TEL, ETC.)
	APPROX. UNDERGROUND COMMUNICATION LINES
	CONTROL POINTS
	BENCHMARK
	DOMESTIC WATER
	APPROX. WATER MAIN
	APPROX. WATER SERVICE
	WATER VALVE
	FIRE HYDRANT
	LIGHTING
	POLE MOUNTED LIGHT
	NATURAL GAS
	GAS VALVE
	APPROX. GAS MAIN
	APPROX. GAS SERVICE LINE
	POWER
	ELECTRICAL LINES, OVERHEAD
	APPROX. ELECTRICAL LINES, UNDERGROUND
	UTILITY POLE
	UTILITY POLE WITH LIGHT
	UTILITY POLE WITH TRANSFORMER
	PROPERTY
	PROPERTY LINE
	EASEMENT LINE
	IRON PIPE
	IRON ROD
	MONUMENT
	ROADS
	GUARD RAIL
	SIGN
	SITE FEATURES
	EDGE OF WATER
	BARBED WIRE FENCE
	CHAIN LINK FENCE
	RAIL FENCE
	STOCKADE FENCE
	WIRE FENCE
	STONE WALL
	TREE
	TREE LINE
	SANITARY SEWER
	APPROX. SANITARY SEWER MAIN
	APPROX. SANITARY SEWER SERVICE LINE
	SANITARY SEWER MANHOLE
	SEWER CLEAN OUT
	STORM SEWER
	APPROX. STORM DRAIN PIPE
	STORM DRAIN MANHOLE
	CURB INLET
	CATCH BASIN
	TOPOGRAPHY
	CONTOUR
	SPOT ELEVATION
	WETLANDS
	WETLANDS LINE



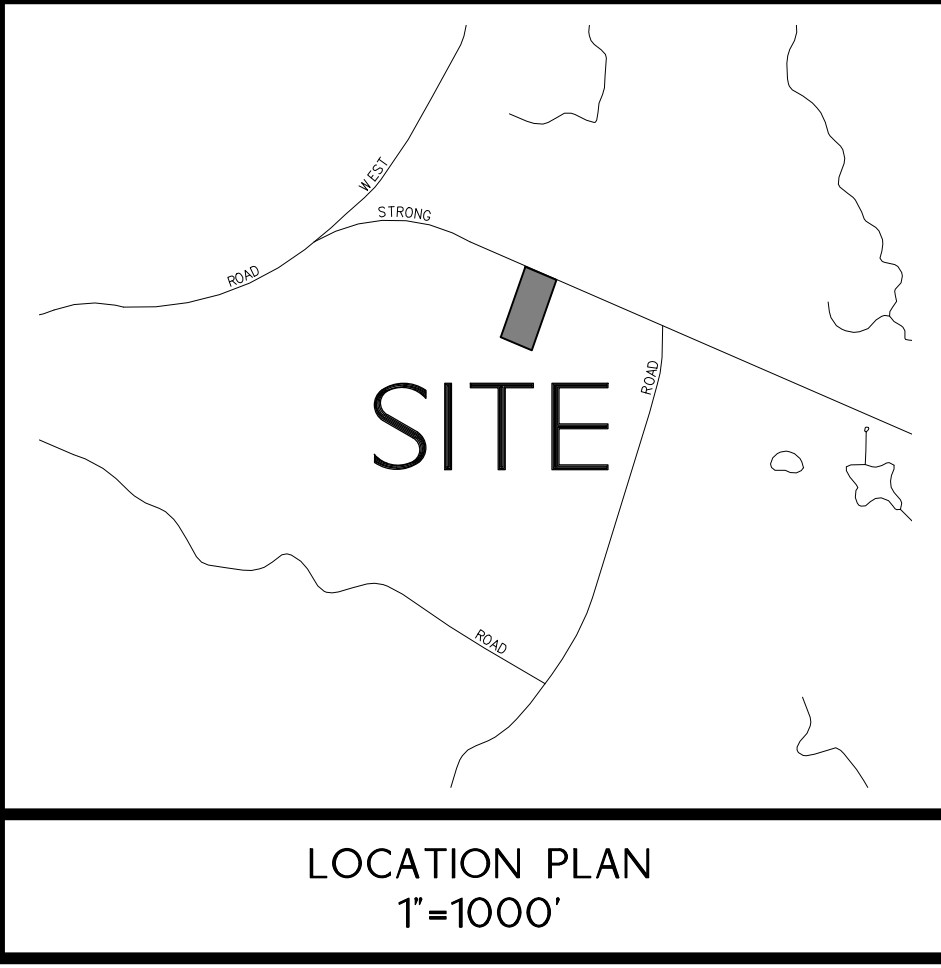
NOTES:
1. PROPERTY IS IN THE RR ZONE.
2. PARCEL CONTAINS 67,953 SQUARE FEET OR 1.56 ACRES.
3. HORIZONTAL DATUM IS BASED ON NAD83. VERTICAL DATUM IS BASED ON NAVD88.
4. PROPERTY DOES FALL WITHIN "ZONE X" SPECIAL FLOOD HAZARD ZONE AS DEPICTED ON: "FIRM FLOOD INSURANCE RATE MAP 0900300379F" EFFECTIVE DATE: 9/26/2008 FEDERAL EMERGENCY MANAGEMENT AGENCY FEDERAL INSURANCE ADMINISTRATION.
5. UNDERGROUND UTILITY, STRUCTURE AND FACILITY LOCATIONS DEPICTED AND NOTED HEREON HAVE BEEN COMPILED, IN PART, FROM RECORD MAPPING SUPPLIED BY THE RESPECTIVE UTILITY COMPANIES OR GOVERNMENTAL AGENCIES, FROM PAROL TESTIMONY AND FROM OTHER SOURCES. THESE LOCATIONS MUST BE CONSIDERED AS APPROXIMATE IN NATURE. ADDITIONALLY, OTHER SUCH FEATURES MAY EXIST ON THE SITE, THE EXISTENCE OF WHICH ARE UNKNOWN TO DESIGN PROFESSIONALS, INC. THE SIZE, LOCATION AND EXISTENCE OF ALL SUCH FEATURES MUST BE FIELD DETERMINED AND VERIFIED BY THE APPROPRIATE AUTHORITIES PRIOR TO CONSTRUCTION.
6. CONTRACTOR SHALL CONTACT "CALL BEFORE YOU DIG" FOR UNDERGROUND UTILITY MARKING AT LEAST TWO FULL WORKING DAYS PRIOR TO START OF CONSTRUCTION: 1-800-922-4455 OR WWW.CBYD.COM.

MAP REFERENCES:
1. PLOT PLAN SUBDIVISION PLAN LAND OF HAROLD J.A. COLLINS & FAITH C. MARTIN SOUTH WINDSOR CONNECTICUT GARDNER & PETERSON ASSOC. 576 OLD POST ROAD TOLLAND, CONNECTICUT PROFESSIONAL ENGINEERS LAND SURVEYORS BY M.L.T. SCALE 1"=40' DATE 9/6/79 SHEET NO. 1 OF 2 MAP NO. 5160
2. SURVEY OF PROPERTY IN SOUTH WINDSOR, CONN FOR ROBERT C. GELINAS JR. AUGUST 5, 1976 1"=50' CERTIFIED SUBSTANTIALLY CORRECT CLASS A-2 ACCURACY.

SURVEY NOTES:
THIS SURVEY AND MAP HAS BEEN PREPARED PURSUANT TO THE REGULATIONS OF CONNECTICUT STATE AGENCIES SECTIONS 20-300b-1 THRU 20-300b-20 AND THE "STANDARDS SUGGESTED METHODS AND PROCEDURES FOR SURVEYS AND MAPS IN THE STATE OF CONNECTICUT" AS ADOPTED BY THE CONNECTICUT ASSOCIATION OF LAND SURVEYORS, INC. ON AUGUST 29, 2019.

- TYPE OF SURVEY IS AN IMPROVEMENT LOCATION SURVEY AND IS INTENDED TO DEPICT THE LOCATION OF EXISTING HOUSE AND PROPOSED ADDITIONS RELATIVE TO PROPERTY LINES.
- THIS IS A RESURVEY BASED ON MAP REFERENCE #1.
- HORIZONTAL ACCURACY MEETS CLASS A-2 STANDARDS.

TO MY KNOWLEDGE AND BELIEF, THIS MAP IS SUBSTANTIALLY CORRECT AS NOTED HEREON.



IMPROVEMENT LOCATION SURVEY

V-1

NO. DATE

BY

REVISIONS

PROJECT NO. 4687

DESIGN BY: 6/16/21

DRAWN BY: LEC

FOR: MS ROBIN SURWILO 871 STRONG ROAD SOUTH WINDSOR CT, 06074 860-209-4764

PREPARED FOR: 21 JEFFREY DRIVE SOUTH WINDSOR, CT 06074 860-209-4764 F www.designprofessionalsinc.com

design professionals CIVIL & TRAFFIC ENGINEERS / PLANNERS / SURVEYORS GIS ANALYSTS / LANDSCAPE ARCHITECTS