

1. The proposed work on this project site consists of removal of certain existing site features, construction of commercial business rental units in three (3) separate buildings, and installation of a stormwater management system. The stormwater management facilities consisting of catch basins, manholes, yard drains and connecting piping, and stormwater retention/infiltration basins, and associated land grading and restoration.
2. Construction of this site is expected to begin in the summer of 2020, with completion on a future date to be determined.
3. Prior to any construction activity occurring on this site, install erosion and sediment control barriers at the edge of the proposed disturbed area boundary to prevent erosion and sediment from leaving the site. All erosion and sediment control measures and construction practices shall be as described herein and as further detailed in the Connecticut Connecticut Guidelines for Soil Erosion and Sediment Control by the Connecticut Council on Soil and Water Conservation in Cooperation with the Department of Environmental Protection, DEP Bulletin 34\*, as amended. Maintain and/or replace all erosion and sediment control measures as required throughout the construction period.
4. Following the installation of the initial prescribed erosion and sediment control measures, the contractor shall maintain these facilities on this site will proceed in the following suggested order: (Note that one or more of these tasks may occur concurrently and/or in a different order than suggested, as appropriate for specific site conditions and/or efficient project management and coordination).
  - A. Remove existing site features as necessary to perform the proposed work.
  - B. Construct the stormwater retention/infiltration basins and outlet features.
  - C. Commence site grading and roughing in of driveways and parking areas
  - D. Commence construction of site utilities and other site infrastructure.
  - E. Excavate for and construct the foundations for the new structures, and backfill.
5. Construct superstructures and floors for the buildings and continue on with subsequent building construction activities.
6. Complete construction of site utilities.
7. Finish grade and construct parking areas and driveways
8. Complete all necessary remaining permanent site restoration

5. During the entire period of work on this site, vehicular access to and egress from the work area shall be by way of the construction entrance from Summit Street.

[illegible]

When a permanent grass cover is to be established, sufficient topsoil must be placed over the seedbed and spread over a prepared properly subgrade to obtain a minimum setting depth of 4 inches of the topsoil, then the surface shall be fine-grained and rolled to firmness. The seed mixture shall be broadcast evenly across the surface, fertilized with grass seed and mulch. Uniformly apply limestone to the prepared soil surface at a rate of 4 tons per acre or 200 lb/1000 square feet, followed by 10-10-10 or equivalent fertilizer at a rate of 1 ton per acre or 100 lb/1000 sq ft, or other combination as determined by established by laboratory testing of samples of the actual topsoil placed and spread in the field. After spreading the seed and fertilizer into the topsoil uniformly to a depth of 3 to 4 inches by hand raking or with suitable mechanical equipment, allow the frost to continue, until a reasonably uniform, fine seedbed is obtained. Once the seedbed has been prepared, the seed mixture may be applied by hand broadcasting or applied by air synchronously acceptable procedure. If not applied by hydrosowing the seed mixture shall be applied at a 1 inch soil cover over the seed. Seed application shall occur within 7 days after the seedbed has been prepared. The final seedling seeding shall be performed only during the periods of April 1 to June 15 and August 15 to October 15. Seeding outside of these periods will require the seedlings, the disturbed areas shall be temporarily seeded and/or mulched following the procedure described above.

The seed mixture and application rate for all finished permanent grass areas shall be the same as for the temporary seedings. Seed rates will be increased by 10% in Connecticut DOT "Form 816", as amended. Seeding rates shall be increased by 10% when hydrosowing or cross cracking.

Kentucky Bluegrass	45%	20 lb/ac/bcr	0.46 lb/1000 sq. ft.
Crested Dogstail	45%	20 lb/ac/bcr	0.46 lb/1000 sq. ft.
Perennial Ryegrass	45%	20 lb/ac/bcr	0.46 lb/1000 sq. ft.

- The sides and bottom of the stormwater retention/infiltration basins shall be seeded with "New England Wetland Seed Mixture" available from New England Wetland Plants, Inc., Amherst, MA. The preparation of the planting medium, application of the seed, and the maintenance of the seed bed shall be in strict compliance with the New England Wetland Plants, Inc.'s requirements, specifications and recommendations.
- D. Where permanent mulching is desired or required for stabilization or decorative purposes, mulch shall consist of a heavy layer of wood chips, crushed stone, washed gravel, or similar material.
9. Stockpiling of building materials shall be confined to the areas of disturbance. Vehicular movement shall be limited to established driveway and parking areas. No unnecessary encroachment of construction equipment or other vehicles shall be allowed on the adjacent property. The use of heavy machinery to perform the work of clearing of disturbance shall be restricted to the minimum necessary to perform essential and required activities.
10. Where de-watering operations are necessary in order to perform the required work, either during the excavation or other poorly drained areas, the water from site and shall be discharged to temporary sedimentation/stilling basins prior to release. Sedimentation basins, drainage systems or wetland areas. Discharge water from the sedimentation basins shall be directed to the stormwater management system and sedimentation check dams or other acceptable sediment trapping measures, prior to discharge to the stormwater management system, or wetland areas. All dewatering operations shall incorporate the procedures outlined in the Appendix to Section 5-13 "Dewatering" of the 2002 Guidelines for Soil Erosion and Sediment Control by the

- E. Construct superstructures and floors for the buildings and continue on with subsequent building construction activities.
- F. Complete construction of site utilities.
- G. Finish grade and construct parking areas and driveways
- H. Complete all necessary remaining permanent site restoration.

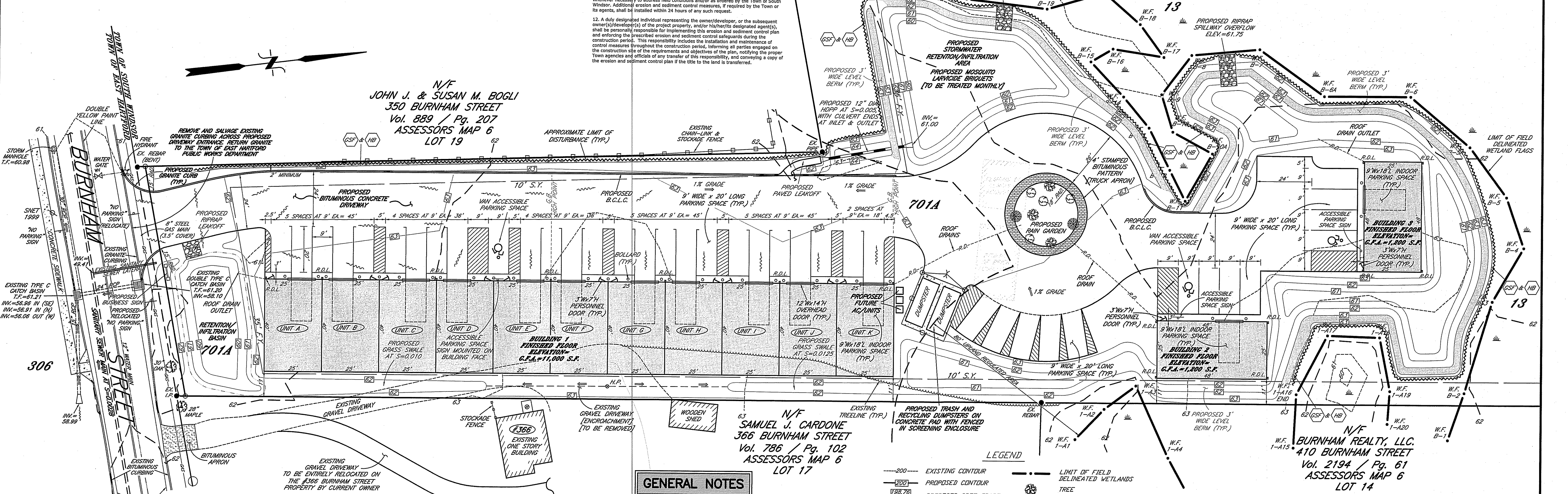
5. During the entire period of work on the site, vehicular access to and egress from the work area shall be by way of the construction entrance from Burnham Street.

Whether permanently or temporarily restored, the seeded areas should be kept uniformly moist by artificial watering when sufficient rainfall does not occur at any time during the period between planting and establishment of a substantially complete grass cover, and otherwise maintained and repaired as necessary until all vegetation is well established and growing self-sufficiently.

spread and stabilized in non-wetland areas which are subject to erosion. Such materials removed shall be placed in approved disposal areas. Erosion control measures shall be installed and maintained. Areas that are not to be paved or built upon, or removed from the site. Haybales, silt fencing and other erosion and sediment control measures shall be maintained, repaired, cleaned and/or replaced as necessary throughout the duration of construction in order to maintain continuance, complete and integral erosion and sediment control protection. Once in place, all erosion and sediment control facilities and measures are to remain in place until the project is completed. Erosion control facilities shall be continuously maintained, until all disturbed areas upgradient of the facilities are stabilized. Once stabilized, all such permanent stabilization, the facilities shall be dismantled, removed from the project site and disposed of in an approved manner. Additional erosion and sediment control measures beyond those shown on the drawings or prescribed herein shall be put in place as needed.

TOWN  
TOWN ELURINHA

LOCATION MAP  
SCALE: 1"=1000'

[illegible]