

South Windsor HS Tennis And Turf

South Windsor, CT

Lighting System

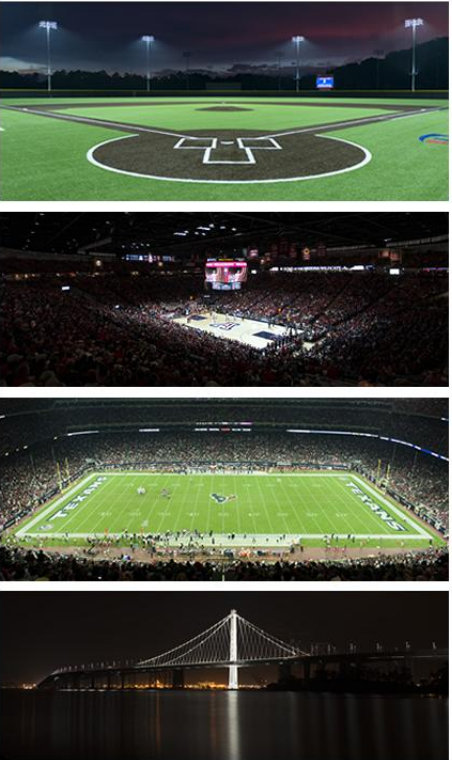
Pole/Fixture Summary						
Pole ID	Pole Height	Mtg Height	Fixture Qty	Luminaire Type	Load	Circuit
F1-F2	70'	68'	1	TLC-LED-900	0.88 kW	A
		68'	3	TLC-LED-1200	3.51 kW	A
		68'	3	TLC-LED-1500	4.23 kW	A
		16'	2	TLC-BT-575	1.15 kW	A
F3-F4	70'	70'	1	TLC-LED-900	0.88 kW	A
		70'	3	TLC-LED-1200	3.51 kW	A
		70'	3	TLC-LED-1500	4.23 kW	A
		25'	2	TLC-BT-575	1.15 kW	A
P1-P9	20'	20'	1	Cree OSQ	0.10 kW	D
T1-T2	30'	30'	1	TLC-LED-550	0.54 kW	B
T3	30'	30'	2	TLC-LED-550	1.08 kW	B
T4	30'	30'	1	TLC-LED-550	0.54 kW	B
		30'	1	TLC-LED-550	0.54 kW	C
T5	30'	30'	2	TLC-LED-550	1.08 kW	B
		30'	1	TLC-LED-550	0.54 kW	B
T6	30'	30'	1	TLC-LED-550	0.54 kW	C
		30'	1	TLC-LED-550	0.54 kW	C
T7-T8	30'	30'	1	TLC-LED-550	0.54 kW	C
T9-T10	30'	30'	2	TLC-LED-550	1.08 kW	B
		30'	2	TLC-LED-550	1.08 kW	C
T11-T12	30'	30'	2	TLC-LED-550	1.08 kW	C
		30'	2	TLC-LED-550	1.08 kW	C
25			69		52.94 kW	

Circuit Summary				
Circuit	Description		Load	Fixture Qty
A	Turf Field		39.08 kW	36
B	Tennis 1-4		6.48 kW	12
C	Tennis 5-8		6.48 kW	12
D	Parking		0.90 kW	9

Fixture Type Summary							
Type	Source	Wattage	Lumens	L90	L80	L70	Quantity
Cree OSQ	LED 5700K - 70 CRI	100W	14,743	--	--	--	7
Cree OSQ	LED 5700K - 70 CRI	100W	15,520	--	--	--	2
TLC-BT-575	LED 5700K - 75 CRI	575W	52,000	>120,000	>120,000	>120,000	8
TLC-LED-1200	LED 5700K - 75 CRI	1170W	150,000	>120,000	>120,000	>120,000	12
TLC-LED-1500	LED 5700K - 75 CRI	1410W	181,000	>120,000	>120,000	>120,000	12
TLC-LED-550	LED 5700K - 75 CRI	540W	67,000	>120,000	>120,000	>120,000	24
TLC-LED-900	LED 5700K - 75 CRI	880W	104,000	>120,000	>120,000	>120,000	4

Single Luminaire Amperage Draw Chart								
Driver Specifications (.90 min power factor)		Line Amperage Per Luminaire (max draw)						
Single Phase Voltage		208 (60)	220 (60)	240 (60)	277 (60)	347 (60)	380 (60)	480 (60)
CREE OSQ		-	-	-	-	0.3	-	0.2
TLC-BT-575		3.3	3.2	2.9	2.5	2.0	1.8	1.5
TLC-LED-1200		6.9	6.5	6.0	5.2	4.2	3.8	3.0
TLC-LED-1500		8.4	7.9	7.3	6.3	5.0	4.6	3.6
TLC-LED-550		3.2	3.0	2.8	2.4	1.9	1.8	1.4
TLC-LED-900		5.2	4.9	4.5	3.9	3.1	2.9	2.3

From Hometown to Professional



South Windsor HS Tennis And Turf

South Windsor, CT

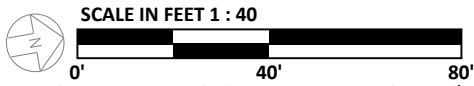
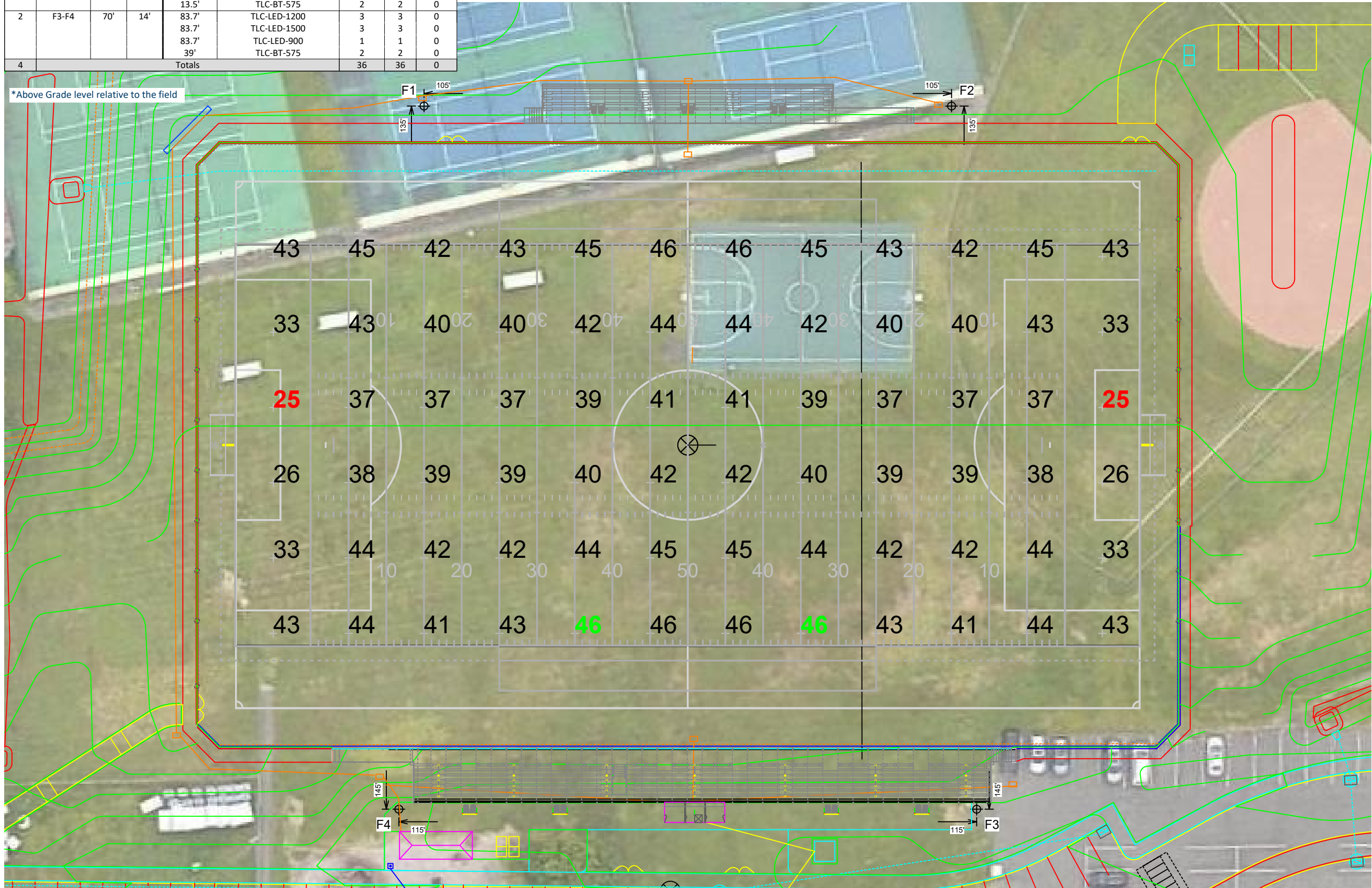
Light Level Summary

Calculation Grid Summary								
Grid Name	Calculation Metric	Illumination					Circuits	Fixture Qty
		Ave	Min	Max	Max/Min	Ave/Min		
Football	Horizontal Illuminance	40.6	25	46	1.83	1.62	A	36
Home Bleachers	Horizontal	20.4	13	29	2.33	1.57	A	36
Parking 1	Horizontal	2.38	0	8	37.91		D	9
Parking 2	Horizontal	5.33	4	8	1.80	1.33	D	9
Property Spill Line	Horizontal Illuminance	0.01	0	0.05	0.00		A,B,C,D	69
Property Spill Line	Max Vertical Illuminance Metric	0.02	0	0.19	0.00		A,B,C,D	69
Property Spill Line (Cd)	Max Candela Metric	384	0	2915	0.00		A,B,C,D	69
Soccer	Horizontal Illuminance	41.5	25	50	1.99	1.66	A	36
Tennis 1-3	Horizontal Illuminance	41.7	28	56	1.99	1.49	B	12
Tennis 1-4	Horizontal Illuminance	33.7	0	56	416.60		B	12
Tennis 5-8	Horizontal Illuminance	44	30	56	1.88	1.47	C	12
Turf Area	Horizontal	40.1	15	56	3.67	2.67	A	36
Visitor Bleachers	Horizontal	11.2	6	30	5.47	1.86	A	36



Equipment List For Areas Shown								
Pole				Luminaires				
QTY	LOCATION	SIZE	GRADE ELEVATION	ABOVE GRADE LEVEL	LUMINAIRE TYPE	QTY/POLE	THIS GRID	OTHER GRIDS
2	F1-F2	70'	-2'	68.3'	TLC-LED-1200	3	3	0
				68.3'	TLC-LED-1500	3	3	0
				68.3'	TLC-LED-900	1	1	0
				13.5'	TLC-BT-575	2	2	0
2	F3-F4	70'	14'	83.7'	TLC-LED-1200	3	3	0
				83.7'	TLC-LED-1500	3	3	0
				83.7'	TLC-LED-900	1	1	0
				39'	TLC-BT-575	2	2	0
4	Totals					36	36	0

*Above Grade level relative to the field



ENGINEERED DESIGN By: Z.Morris • File #133191E • 21-Feb-24

Pole location(s) ⊕ dimensions are relative to 0,0 reference point(s) ✕

South Windsor HS Tennis And Turf

South Windsor, CT

Grid Summary	
Name	Football
Size	360' x 160'
Spacing	30.0' x 30.0'
Height	3.0' above grade

Illumination Summary	
	MAINTAINED HORIZONTAL FOOTCANDLES
	Entire Grid
Guaranteed Average	40
Scan Average	40.59
Maximum	46
Minimum	25
Avg/Min	1.60
Guaranteed Max/Min	2
Max/Min	1.83
UG (adjacent pts)	1.48
CU	0.55
No. of Points	72
LUMINAIRE INFORMATION	
Applied Circuits	A
No. of Luminaires	36
Total Load	39.08 kW

Guaranteed Performance: The ILLUMINATION described above is guaranteed per your Musco Warranty document and includes a 0.95 dirt depreciation factor.

Field Measurements: Individual field measurements may vary from computer-calculated predictions and should be taken in accordance with IESNA RP-6-15.

Electrical System Requirements: Refer to Amperage Draw Chart and/or the "Musco Control System Summary" for electrical sizing.

Installation Requirements: Results assume ± 3% nominal voltage at line side of the driver and structures located within 3 feet (1m) of design locations.



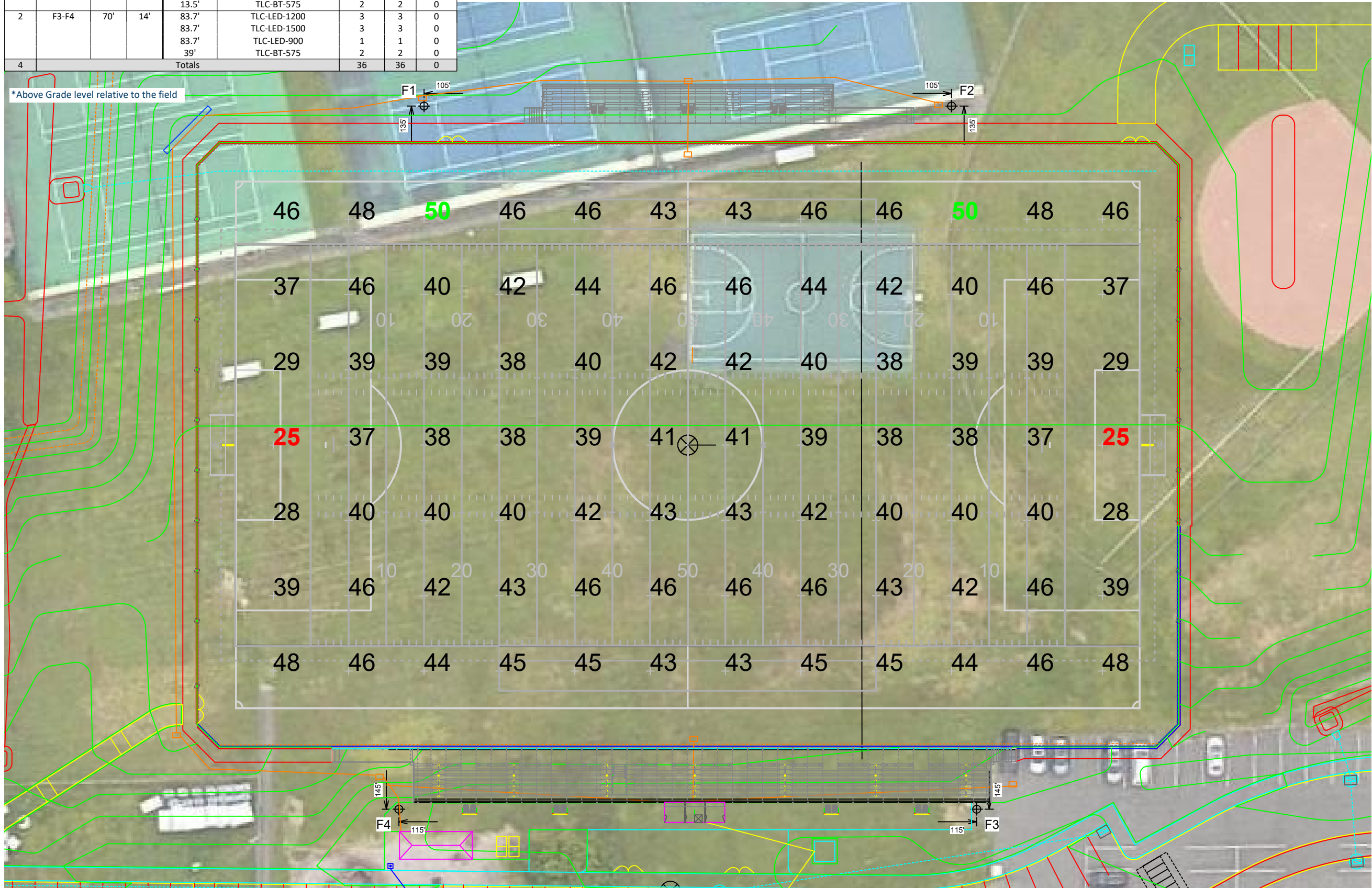
We Make It Happen®

Not to be reproduced in whole or part without the written consent of Musco Sports Lighting, LLC. ©1981, 2023 Musco Sports Lighting, LLC.

ILLUMINATION SUMMARY

Equipment List For Areas Shown								
Pole				Luminaires				
QTY	LOCATION	SIZE	GRADE ELEVATION	ABOVE GRADE LEVEL	LUMINAIRE TYPE	QTY/POLE	THIS GRID	OTHER GRIDS
2	F1-F2	70'	-2'	68.3'	TLC-LED-1200	3	3	0
				68.3'	TLC-LED-1500	3	3	0
				68.3'	TLC-LED-900	1	1	0
				13.5'	TLC-BT-575	2	2	0
2	F3-F4	70'	14'	83.7'	TLC-LED-1200	3	3	0
				83.7'	TLC-LED-1500	3	3	0
				83.7'	TLC-LED-900	1	1	0
				39'	TLC-BT-575	2	2	0
4	Totals					36	36	0

*Above Grade level relative to the field



South Windsor HS Tennis And Turf

South Windsor, CT

Grid Summary	
Name	Soccer
Size	360' x 210'
Spacing	30.0' x 30.0'
Height	3.0' above grade

Illumination Summary	
	MAINTAINED HORIZONTAL FOOTCANDLES
	Entire Grid
Guaranteed Average	40
Scan Average	41.54
Maximum	50
Minimum	25
Avg/Min	1.67
Guaranteed Max/Min	2
Max/Min	1.99
UG (adjacent pts)	1.49
CU	0.66
No. of Points	84
LUMINAIRE INFORMATION	
Applied Circuits	A
No. of Luminaires	36
Total Load	39.08 kW

Guaranteed Performance: The ILLUMINATION described above is guaranteed per your Musco Warranty document and includes a 0.95 dirt depreciation factor.

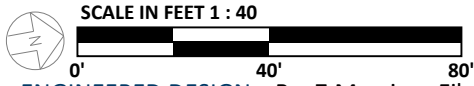
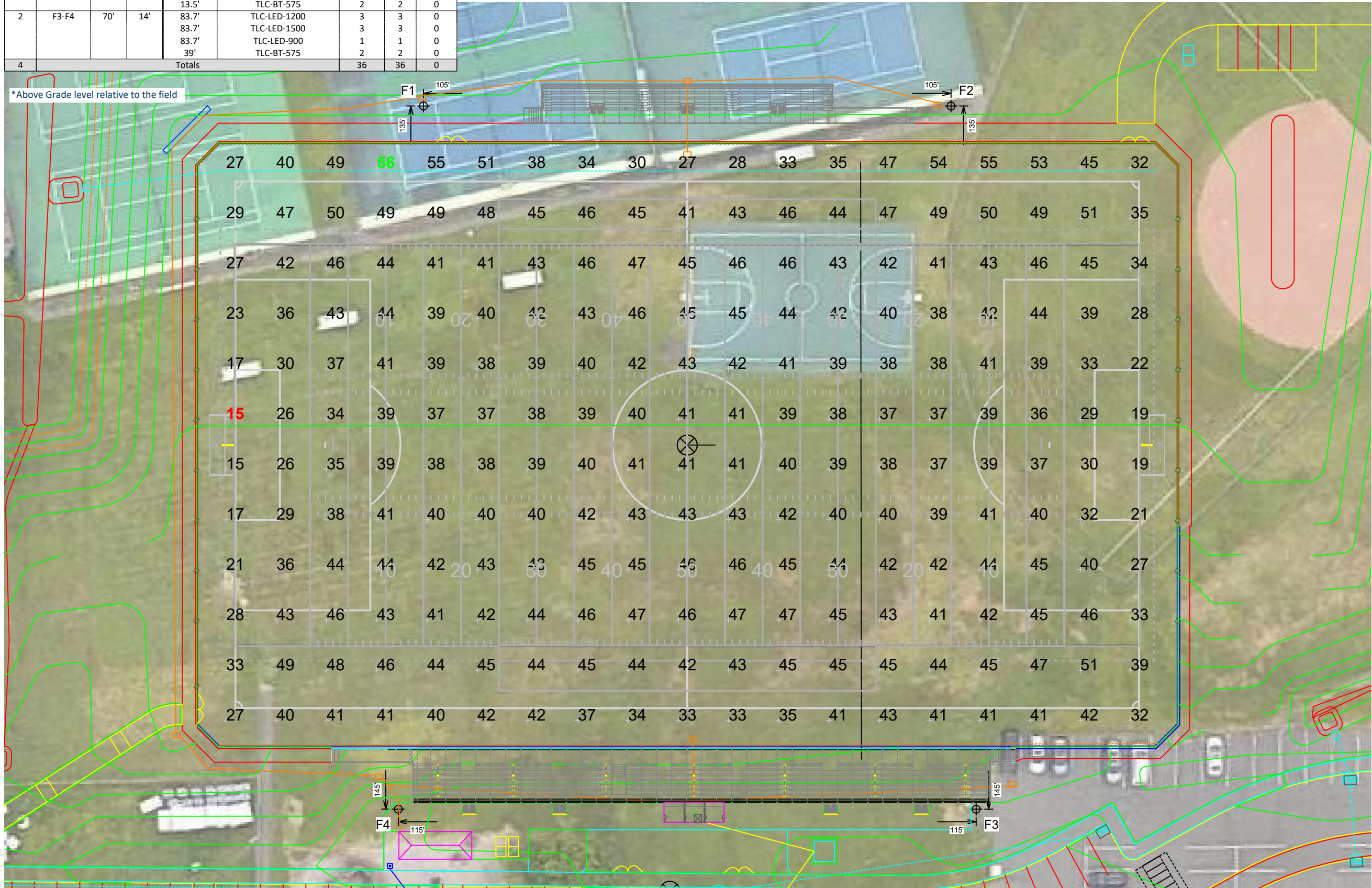
Field Measurements: Individual field measurements may vary from computer-calculated predictions and should be taken in accordance with IESNA RP-6-15.

Electrical System Requirements: Refer to Amperage Draw Chart and/or the "Musco Control System Summary" for electrical sizing.

Installation Requirements: Results assume ± 3% nominal voltage at line side of the driver and structures located within 3 feet (1m) of design locations.

Equipment List For Areas Shown								
Pole				Luminaires				
QTY	LOCATION	SIZE	GRADE ELEVATION	ABOVE GRADE LEVEL	LUMINAIRE TYPE	QTY/POLE	THIS GRID	OTHER GRIDS
2	F1-F2	70'	-2'	68.3'	TLC-LED-1200	3	3	0
				68.3'	TLC-LED-1500	3	3	0
				68.3'	TLC-LED-900	1	1	0
				13.5'	TLC-BT-575	2	2	0
2	F3-F4	70'	14'	83.7'	TLC-LED-1200	3	3	0
				83.7'	TLC-LED-1500	3	3	0
				83.7'	TLC-LED-900	1	1	0
				39'	TLC-BT-575	2	2	0
4	Totals					36	36	0

*Above Grade level relative to the field



ENGINEERED DESIGN By: Z.Morris • File #133191E • 21-Feb-24

Pole location(s) ⊕ dimensions are relative to 0,0 reference point(s) ⊗

South Windsor HS Tennis And Turf

South Windsor, CT

Grid Summary	
Name Turf Area Size 360' x 160' Spacing 20.0' x 20.0' Height 3.0' above grade	

Illumination Summary	
	MAINTAINED HORIZONTAL FOOTCANDLES
	Entire Grid
	Scan Average 40.06
	Maximum 56
	Minimum 15
	Avg/Min 2.64
	Max/Min 3.67
	UG (adjacent pts) 1.74
	CU 0.77
	No. of Points 228
LUMINAIRE INFORMATION	
Applied Circuits	A
No. of Luminaires	36
Total Load	39.08 kW

Guaranteed Performance: The ILLUMINATION described above is guaranteed per your Musco Warranty document and includes a 0.95 dirt depreciation factor.

Field Measurements: Individual field measurements may vary from computer-calculated predictions and should be taken in accordance with IESNA RP-6-15.

Electrical System Requirements: Refer to Amperage Draw Chart and/or the "Musco Control System Summary" for electrical sizing.

Installation Requirements: Results assume ± 3% nominal voltage at line side of the driver and structures located within 3 feet (1m) of design locations.



Not to be reproduced in whole or part without the written consent of Musco Sports Lighting, LLC. ©1981, 2023 Musco Sports Lighting, LLC.

ILLUMINATION SUMMARY

Equipment List For Areas Shown								
Pole				Luminaires				
QTY	LOCATION	SIZE	GRADE ELEVATION	ABOVE GRADE LEVEL	LUMINAIRE TYPE	QTY/POLE	THIS GRID	OTHER GRIDS
2	F1-F2	70'	-2'	68.3'	TLC-LED-1200	3	3	0
				68.3'	TLC-LED-1500	3	3	0
				68.3'	TLC-LED-900	1	1	0
				13.5'	TLC-BT-575	2	2	0
2	F3-F4	70'	14'	83.7'	TLC-LED-1200	3	3	0
				83.7'	TLC-LED-1500	3	3	0
				83.7'	TLC-LED-900	1	1	0
				39'	TLC-BT-575	2	2	0
4	Totals					36	36	0

*Above Grade level relative to the field



South Windsor HS Tennis And Turf

South Windsor, CT

Grid Summary	
Name	Home Bleachers
Size	360' x 160'
Spacing	10.0' x 10.0'
Height	3.0' above grade

Illumination Summary	
	MAINTAINED HORIZONTAL FOOTCANDLES
Scan Average	20.39
Maximum	29
Minimum	13
Avg/Min	1.61
Max/Min	2.33
UG (adjacent pts)	1.51
CU	0.02
No. of Points	46
LUMINAIRE INFORMATION	
Applied Circuits	A
No. of Luminaires	36
Total Load	39.08 kW

Guaranteed Performance: The ILLUMINATION described above is guaranteed per your Musco Warranty document and includes a 0.95 dirt depreciation factor.

Field Measurements: Individual field measurements may vary from computer-calculated predictions and should be taken in accordance with IESNA RP-6-15.

Electrical System Requirements: Refer to Amperage Draw Chart and/or the "Musco Control System Summary" for electrical sizing.

Installation Requirements: Results assume ± 3% nominal voltage at line side of the driver and structures located within 3 feet (1m) of design locations.



We Make It Happen®

Not to be reproduced in whole or part without the written consent of Musco Sports Lighting, LLC. ©1981, 2023 Musco Sports Lighting, LLC.

ILLUMINATION SUMMARY

Equipment List For Areas Shown								
Pole				Luminaires				
QTY	LOCATION	SIZE	GRADE ELEVATION	ABOVE GRADE LEVEL	LUMINAIRE TYPE	QTY/POLE	THIS GRID	OTHER GRIDS
2	F1-F2	70'	-2'	68.3'	TLC-LED-1200	3	3	0
				68.3'	TLC-LED-1500	3	3	0
				68.3'	TLC-LED-900	1	1	0
				13.5'	TLC-BT-575	2	2	0
2	F3-F4	70'	14'	83.7'	TLC-LED-1200	3	3	0
				83.7'	TLC-LED-1500	3	3	0
				83.7'	TLC-LED-900	1	1	0
				39'	TLC-BT-575	2	2	0
4	Totals					36	36	0

*Above Grade level relative to the field



South Windsor HS Tennis And Turf

South Windsor, CT

Grid Summary	
Name	Visitor Bleachers
Size	360' x 160'
Spacing	10.0' x 10.0'
Height	3.0' above grade

Illumination Summary	
	MAINTAINED HORIZONTAL FOOTCANDLES
Scan Average	11.17
Maximum	30
Minimum	6
Avg/Min	2.01
Max/Min	5.47
UG (adjacent pts)	1.73
CU	0.01
No. of Points	27
LUMINAIRE INFORMATION	
Applied Circuits	A
No. of Luminaires	36
Total Load	39.08 kW

Guaranteed Performance: The ILLUMINATION described above is guaranteed per your Musco Warranty document and includes a 0.95 dirt depreciation factor.

Field Measurements: Individual field measurements may vary from computer-calculated predictions and should be taken in accordance with IESNA RP-6-15.

Electrical System Requirements: Refer to Amperage Draw Chart and/or the "Musco Control System Summary" for electrical sizing.

Installation Requirements: Results assume ± 3% nominal voltage at line side of the driver and structures located within 3 feet (1m) of design locations.



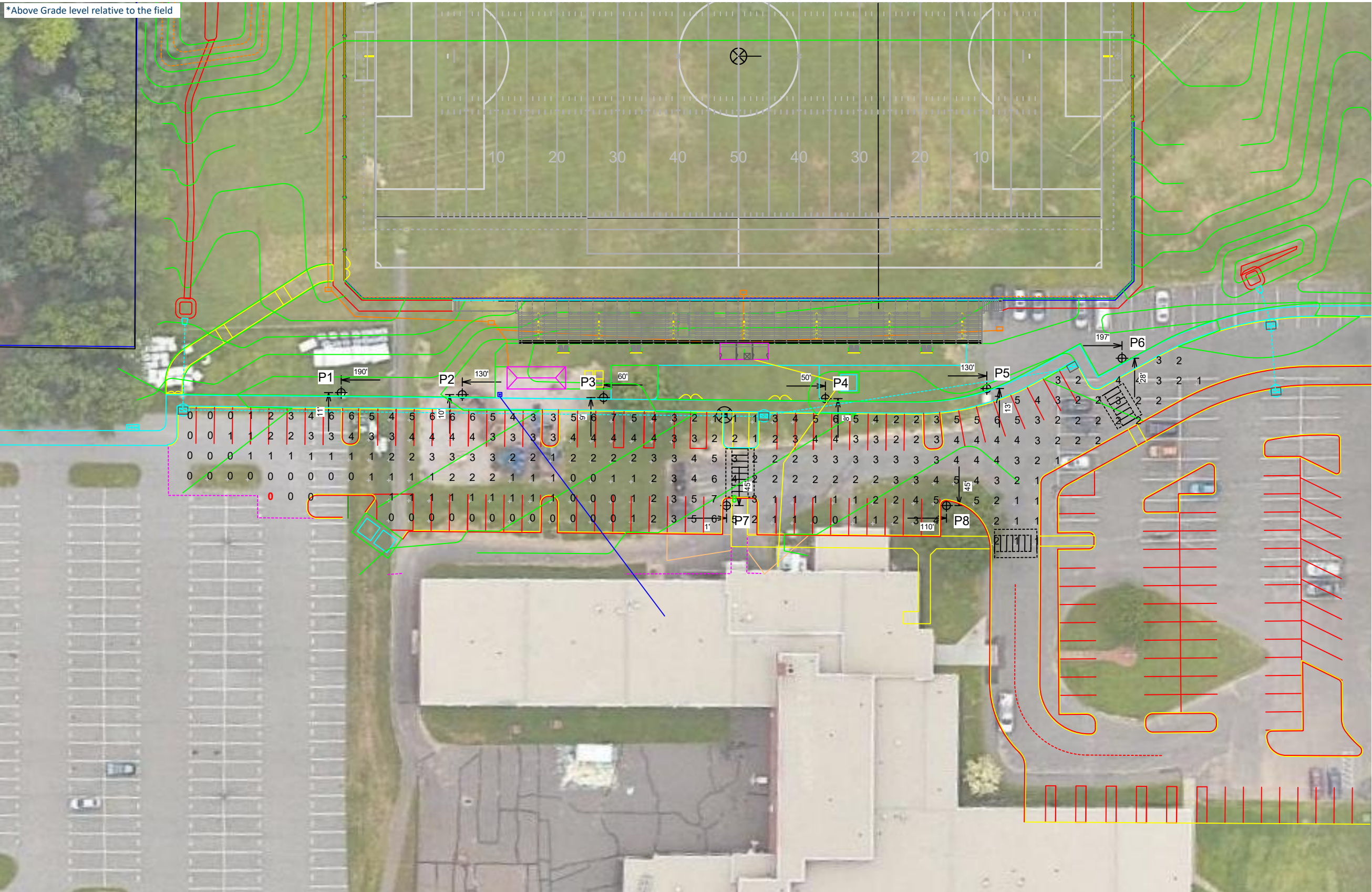
We Make It Happen®

Not to be reproduced in whole or part without the written consent of Musco Sports Lighting, LLC. ©1981, 2023 Musco Sports Lighting, LLC.

ILLUMINATION SUMMARY

Equipment List For Areas Shown								
Pole				Luminaires				
QTY	LOCATION	SIZE	GRADE ELEVATION	ABOVE GRADE LEVEL	LUMINAIRE TYPE	QTY/POLE	THIS GRID	OTHER GRIDS
9	P1-P9	20'	3'	23'	CREE OSQ	1	1	0
9	Totals					9	9	0

*Above Grade level relative to the field



South Windsor HS Tennis And Turf

South Windsor, CT

Grid Summary	
Name	Parking 1
Size	2' x 2'
Spacing	10.0' x 10.0'
Height	3.0' above grade

Illumination Summary	
MAINTAINED HORIZONTAL FOOTCANDLES	
Entire Grid	
Scan Average	2.41
Maximum	8
Minimum	0
Avg/Min	25.79
Max/Min	82.64
UG (adjacent pts)	4.19
CU	0.48
No. of Points	268
LUMINAIRE INFORMATION	
Applied Circuits	D
No. of Luminaires	9
Total Load	0.90 kW

Guaranteed Performance: The ILLUMINATION described above is guaranteed per your Musco Warranty document and includes a 0.95 dirt depreciation factor.

Field Measurements: Individual field measurements may vary from computer-calculated predictions and should be taken in accordance with IESNA RP-6-15.

Electrical System Requirements: Refer to Amperage Draw Chart and/or the "Musco Control System Summary" for electrical sizing.

Installation Requirements: Results assume ± 3% nominal voltage at line side of the driver and structures located within 3 feet (1m) of design locations.



We Make It Happen®

Not to be reproduced in whole or part without the written consent of Musco Sports Lighting, LLC. ©1981, 2023 Musco Sports Lighting, LLC.

Equipment List For Areas Shown								
Pole				Luminaires				
QTY	LOCATION	SIZE	GRADE ELEVATION	ABOVE GRADE LEVEL	LUMINAIRE TYPE	QTY/POLE	THIS GRID	OTHER GRIDS
9	P1-P9	20'	3'	23'	CREE OSQ	1	1	0
9	Totals					9	9	0

*Above Grade level relative to the field



South Windsor HS Tennis And Turf

South Windsor, CT

Grid Summary	
Name	Parking 2
Size	2' x 2'
Spacing	10.0' x 10.0'
Height	3.0' above grade

Illumination Summary	
MAINTAINED HORIZONTAL FOOTCANDLES	
Entire Grid	
Scan Average	3.35
Maximum	4
Minimum	2
Avg/Min	1.35
Max/Min	1.65
UG (adjacent pts)	1.41
CU	0.02
No. of Points	8
LUMINAIRE INFORMATION	
Applied Circuits	D
No. of Luminaires	9
Total Load	0.90 kW

Guaranteed Performance: The ILLUMINATION described above is guaranteed per your Musco Warranty document and includes a 0.95 dirt depreciation factor.

Field Measurements: Individual field measurements may vary from computer-calculated predictions and should be taken in accordance with IESNA RP-6-15.

Electrical System Requirements: Refer to Amperage Draw Chart and/or the "Musco Control System Summary" for electrical sizing.

Installation Requirements: Results assume ± 3% nominal voltage at line side of the driver and structures located within 3 feet (1m) of design locations.



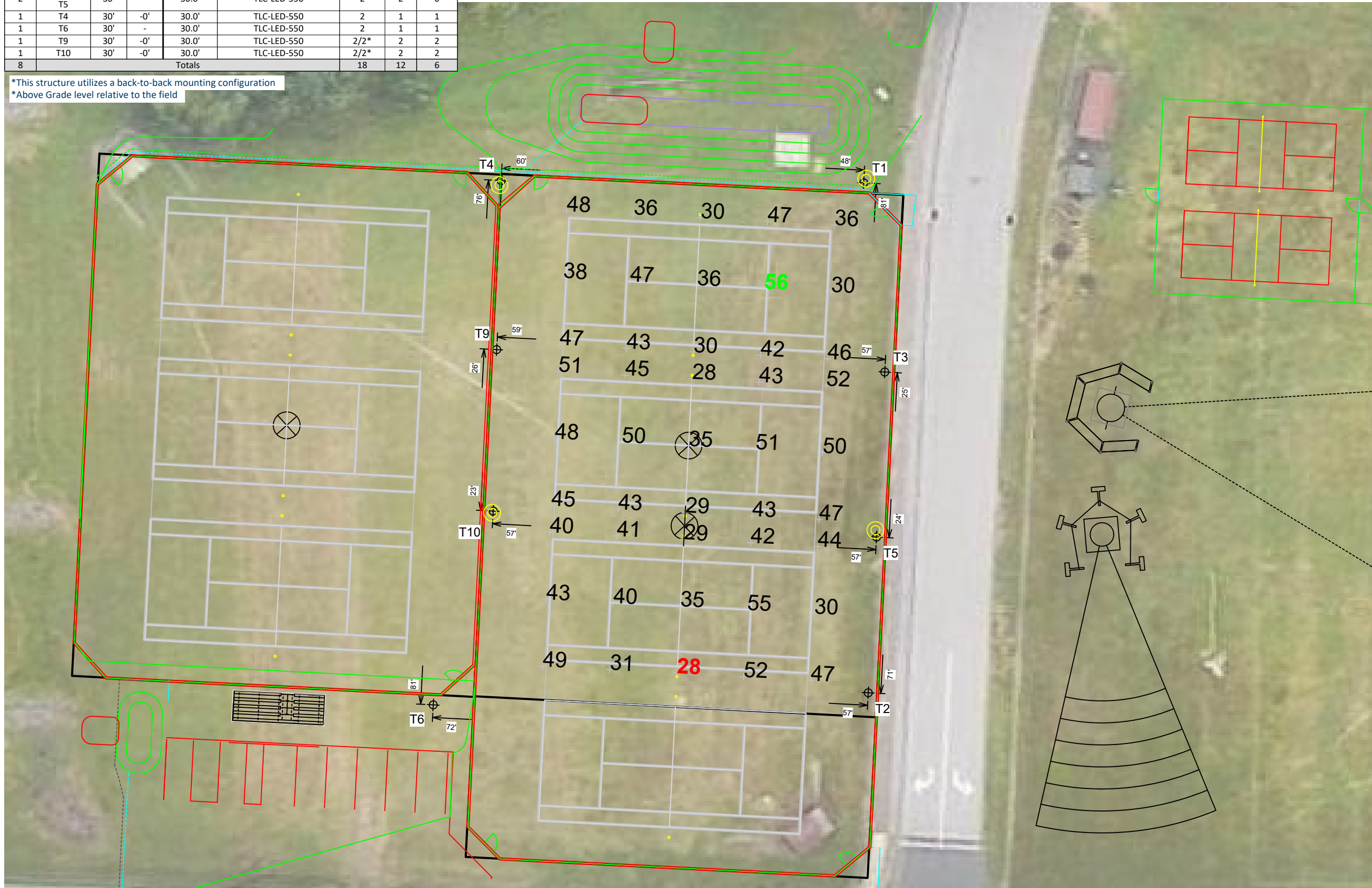
We Make It Happen®

Not to be reproduced in whole or part without the written consent of Musco Sports Lighting, LLC. ©1981, 2023 Musco Sports Lighting, LLC.

ILLUMINATION SUMMARY

Equipment List For Areas Shown								
Pole				Luminaires				
QTY	LOCATION	SIZE	GRADE ELEVATION	ABOVE GRADE LEVEL	LUMINAIRE TYPE	QTY/POLE	THIS GRID	OTHER GRIDS
1	T1	30'	-	30.0'	TLC-LED-550	1	1	0
1	T2	30'	-	30.0'	TLC-LED-550	1	1	0
2	T3 T5	30'	-	30.0'	TLC-LED-550	2	2	0
1	T4	30'	-0'	30.0'	TLC-LED-550	2	1	1
1	T6	30'	-	30.0'	TLC-LED-550	2	1	1
1	T9	30'	-0'	30.0'	TLC-LED-550	2/2*	2	2
1	T10	30'	-0'	30.0'	TLC-LED-550	2/2*	2	2
8	Totals					18	12	6

*This structure utilizes a back-to-back mounting configuration
*Above Grade level relative to the field



Pole location(s) ⊕ dimensions are relative to 0,0 reference point(s) ⊗

South Windsor HS Tennis And Turf

South Windsor, CT

Grid Summary	
Name	Tennis 1-3
Size	3 Court - 12' Spacing
Spacing	20.0' x 20.0'
Height	3.0' above grade

Illumination Summary	
	MAINTAINED HORIZONTAL FOOTCANDLES
	Entire Grid
Guaranteed Average	40
Scan Average	41.67
Maximum	56
Minimum	28
Avg/Min	1.48
Guaranteed Max/Min	2
Max/Min	1.99
UG (adjacent pts)	0.00
CU	0.98
No. of Points	45
LUMINAIRE INFORMATION	
Applied Circuits	B
No. of Luminaires	12
Total Load	6.48 kW

Guaranteed Performance: The ILLUMINATION described above is guaranteed per your Musco Warranty document and includes a 0.95 dirt depreciation factor.

Field Measurements: Individual field measurements may vary from computer-calculated predictions and should be taken in accordance with IESNA RP-6-15.

Electrical System Requirements: Refer to Amperage Draw Chart and/or the "Musco Control System Summary" for electrical sizing.

Installation Requirements: Results assume ± 3% nominal voltage at line side of the driver and structures located within 3 feet (1m) of design locations.

Equipment List For Areas Shown								
Pole				Luminaires				
QTY	LOCATION	SIZE	GRADE ELEVATION	ABOVE GRADE LEVEL	LUMINAIRE TYPE	QTY/POLE	THIS GRID	OTHER GRIDS
1	T1	30'	-	30.0'	TLC-LED-550	1	1	0
1	T2	30'	-	30.0'	TLC-LED-550	1	1	0
2	T3 T5	30'	-	30.0'	TLC-LED-550	2	2	0
1	T4	30'	-0'	30.0'	TLC-LED-550	2	1	1
1	T6	30'	-	30.0'	TLC-LED-550	2	1	1
1	T9	30'	-0'	30.0'	TLC-LED-550	2/2*	2	2
1	T10	30'	-0'	30.0'	TLC-LED-550	2/2*	2	2
8	Totals					18	12	6

*This structure utilizes a back-to-back mounting configuration
*Above Grade level relative to the field



South Windsor HS Tennis And Turf

South Windsor, CT

Grid Summary	
Name	Tennis 1-4
Size	4 Court - 12' Spacing
Spacing	20.0' x 20.0'
Height	3.0' above grade

Illumination Summary	
MAINTAINED HORIZONTAL FOOTCANDLES	
Scan Average	33.72
Maximum	56
Minimum	0
Avg/Min	251.72
Max/Min	416.60
UG (adjacent pts)	0.00
CU	1.00
No. of Points	60
LUMINAIRE INFORMATION	
Applied Circuits	B
No. of Luminaires	12
Total Load	6.48 kW

Guaranteed Performance: The ILLUMINATION described above is guaranteed per your Musco Warranty document and includes a 0.95 dirt depreciation factor.

Field Measurements: Individual field measurements may vary from computer-calculated predictions and should be taken in accordance with IESNA RP-6-15.

Electrical System Requirements: Refer to Amperage Draw Chart and/or the "Musco Control System Summary" for electrical sizing.

Installation Requirements: Results assume ± 3% nominal voltage at line side of the driver and structures located within 3 feet (1m) of design locations.

Equipment List For Areas Shown								
Pole				Luminaires				
QTY	LOCATION	SIZE	GRADE ELEVATION	ABOVE GRADE LEVEL	LUMINAIRE TYPE	QTY/POLE	THIS GRID	OTHER GRIDS
1	T4	30'	-0'	30.0'	TLC-LED-550	2	1	1
1	T6	30'	-	30.0'	TLC-LED-550	2	1	1
2	T7-T8	30'	-	30.0'	TLC-LED-550	1	1	0
1	T9	30'	-0'	30.0'	TLC-LED-550	2/2*	2	2
1	T10	30'	-0'	30.0'	TLC-LED-550	2/2*	2	2
2	T11-T12	30'	-	30.0'	TLC-LED-550	2	2	0
8	Totals					18	12	6

*This structure utilizes a back-to-back mounting configuration
*Above Grade level relative to the field



South Windsor HS Tennis And Turf

South Windsor, CT

Grid Summary	
Name	Tennis 5-8
Size	3 Court - 12' Spacing
Spacing	20.0' x 20.0'
Height	3.0' above grade

Illumination Summary	
	MAINTAINED HORIZONTAL FOOTCANDLES
	Entire Grid
Guaranteed Average	40
Scan Average	43.99
Maximum	56
Minimum	30
Avg/Min	1.48
Guaranteed Max/Min	2
Max/Min	1.88
UG (adjacent pts)	0.00
CU	1.00
No. of Points	45
LUMINAIRE INFORMATION	
Applied Circuits	C
No. of Luminaires	12
Total Load	6.48 kW

Guaranteed Performance: The ILLUMINATION described above is guaranteed per your Musco Warranty document and includes a 0.95 dirt depreciation factor.

Field Measurements: Individual field measurements may vary from computer-calculated predictions and should be taken in accordance with IESNA RP-6-15.

Electrical System Requirements: Refer to Amperage Draw Chart and/or the "Musco Control System Summary" for electrical sizing.

Installation Requirements: Results assume ± 3% nominal voltage at line side of the driver and structures located within 3 feet (1m) of design locations.

Pole location(s) ⊕ dimensions are relative to 0,0 reference point(s) ⊗

South Windsor HS Tennis And Turf

South Windsor, CT

Grid Summary	
Name	Property Spill Line
Spacing	30.0' x 30.0'
Height	3.0' above grade

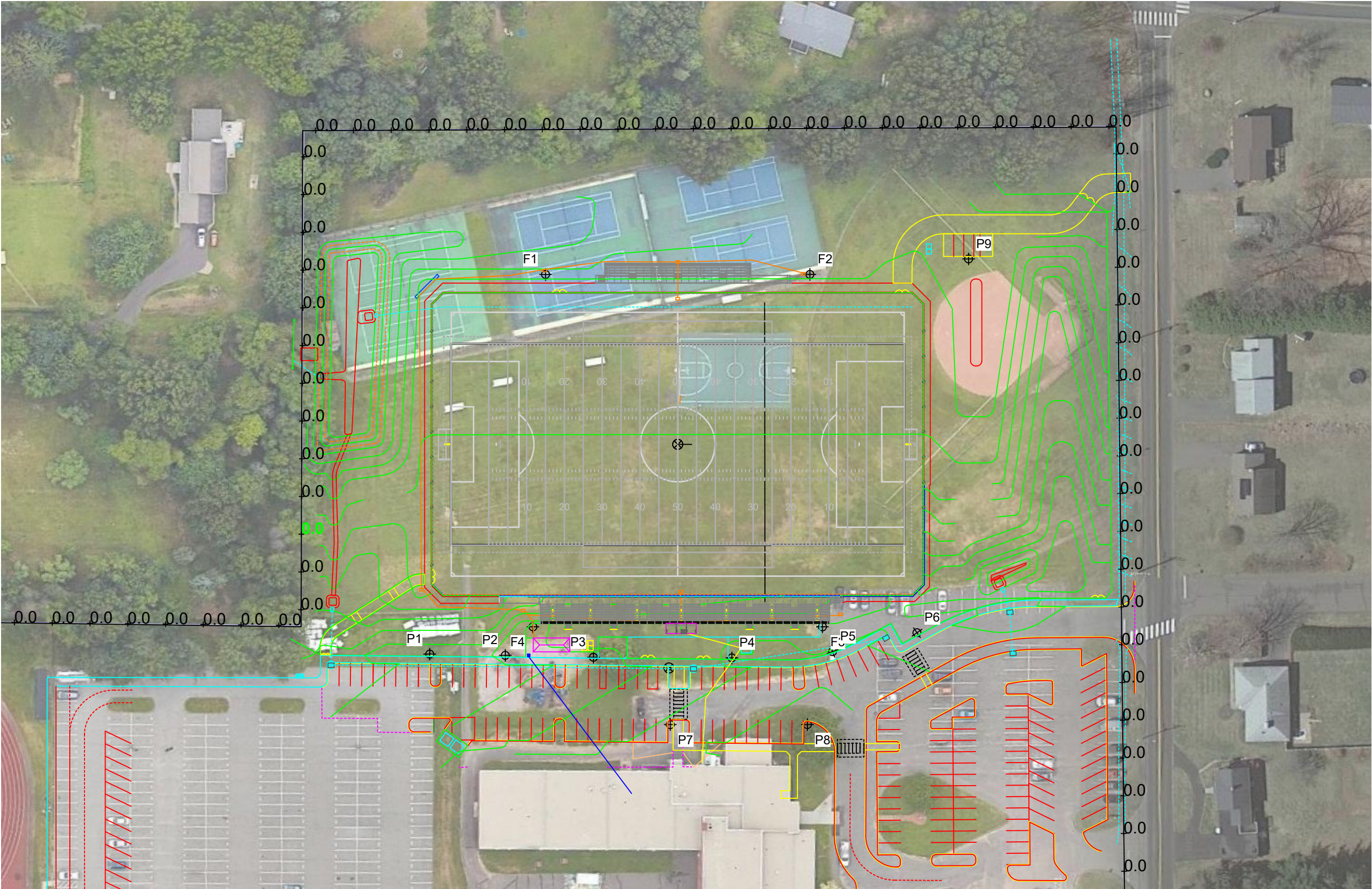
Illumination Summary	
MAINTAINED HORIZONTAL FOOTCANDLES	
Entire Grid	
Scan Average	0.0064
Maximum	0.05
Minimum	0.00
CU	0.00
No. of Points	210
LUMINAIRE INFORMATION	
Applied Circuits	A,B,C,D
No. of Luminaires	69
Total Load	52.94 kW

Guaranteed Performance: The ILLUMINATION described above is guaranteed per your Musco Warranty document and includes a 0.95 dirt depreciation factor.

Field Measurements: Individual field measurements may vary from computer-calculated predictions and should be taken in accordance with IESNA RP-6-15.

Electrical System Requirements: Refer to Amperage Draw Chart and/or the "Musco Control System Summary" for electrical sizing.

Installation Requirements: Results assume ± 3% nominal voltage at line side of the driver and structures located within 3 feet (1m) of design locations.



SCALE IN FEET 1 : 80
0' 80' 160'
ENGINEERED DESIGN By: Z.Morris • File #133191E • 21-Feb-24

Pole location(s) ⊕ dimensions are relative to 0,0 reference point(s) ⊗



Not to be reproduced in whole or part without the written consent of Musco Sports Lighting, LLC. ©1981, 2023 Musco Sports Lighting, LLC.

ILLUMINATION SUMMARY

South Windsor HS Tennis And Turf

South Windsor, CT

Grid Summary	
Name	Property Spill Line
Spacing	30.0' x 30.0'
Height	3.0' above grade

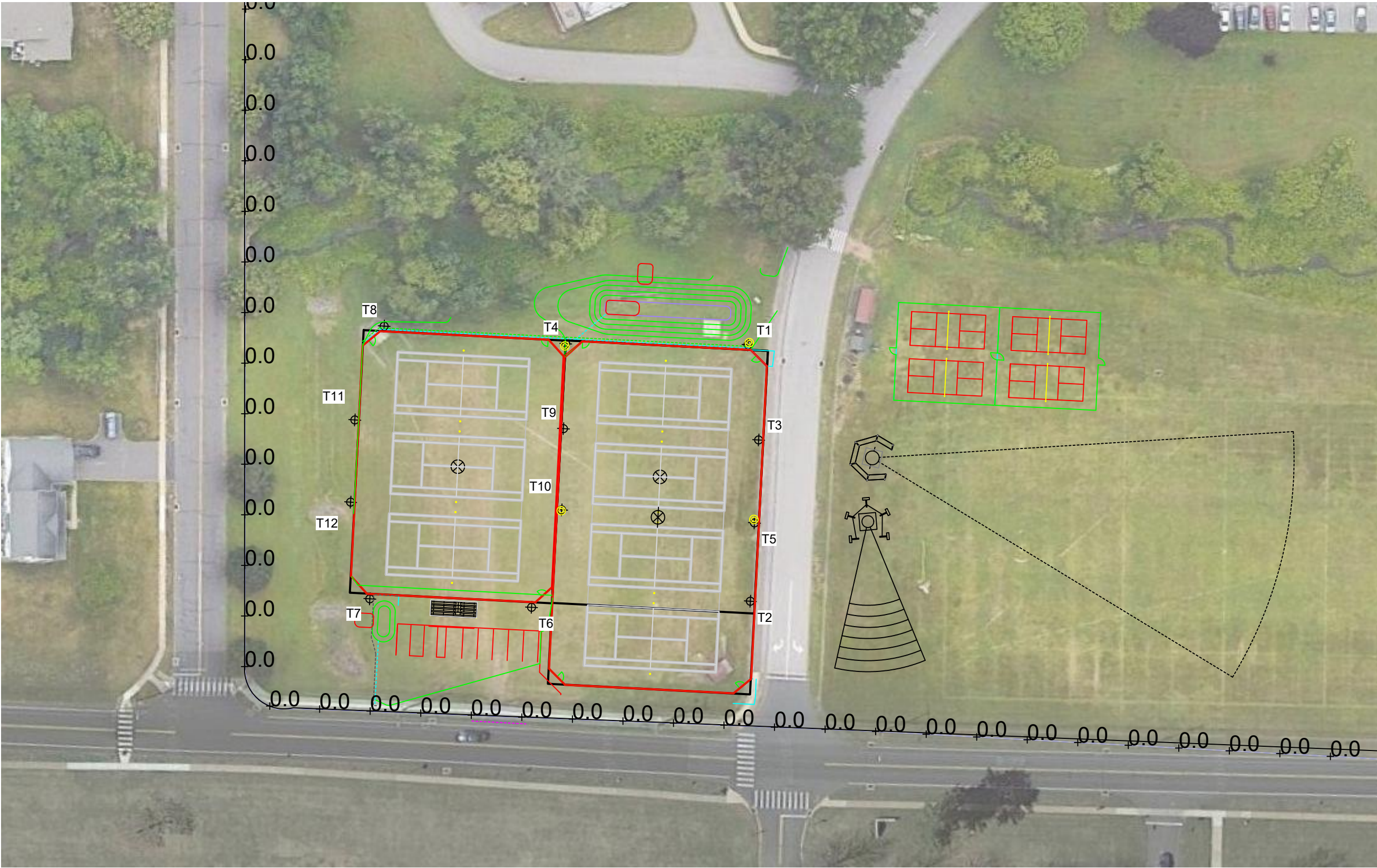
Illumination Summary	
MAINTAINED HORIZONTAL FOOTCANDLES	
Entire Grid	
Scan Average	0.0064
Maximum	0.05
Minimum	0.00
CU	0.00
No. of Points	210
LUMINAIRE INFORMATION	
Applied Circuits	A,B,C,D
No. of Luminaires	69
Total Load	52.94 kW

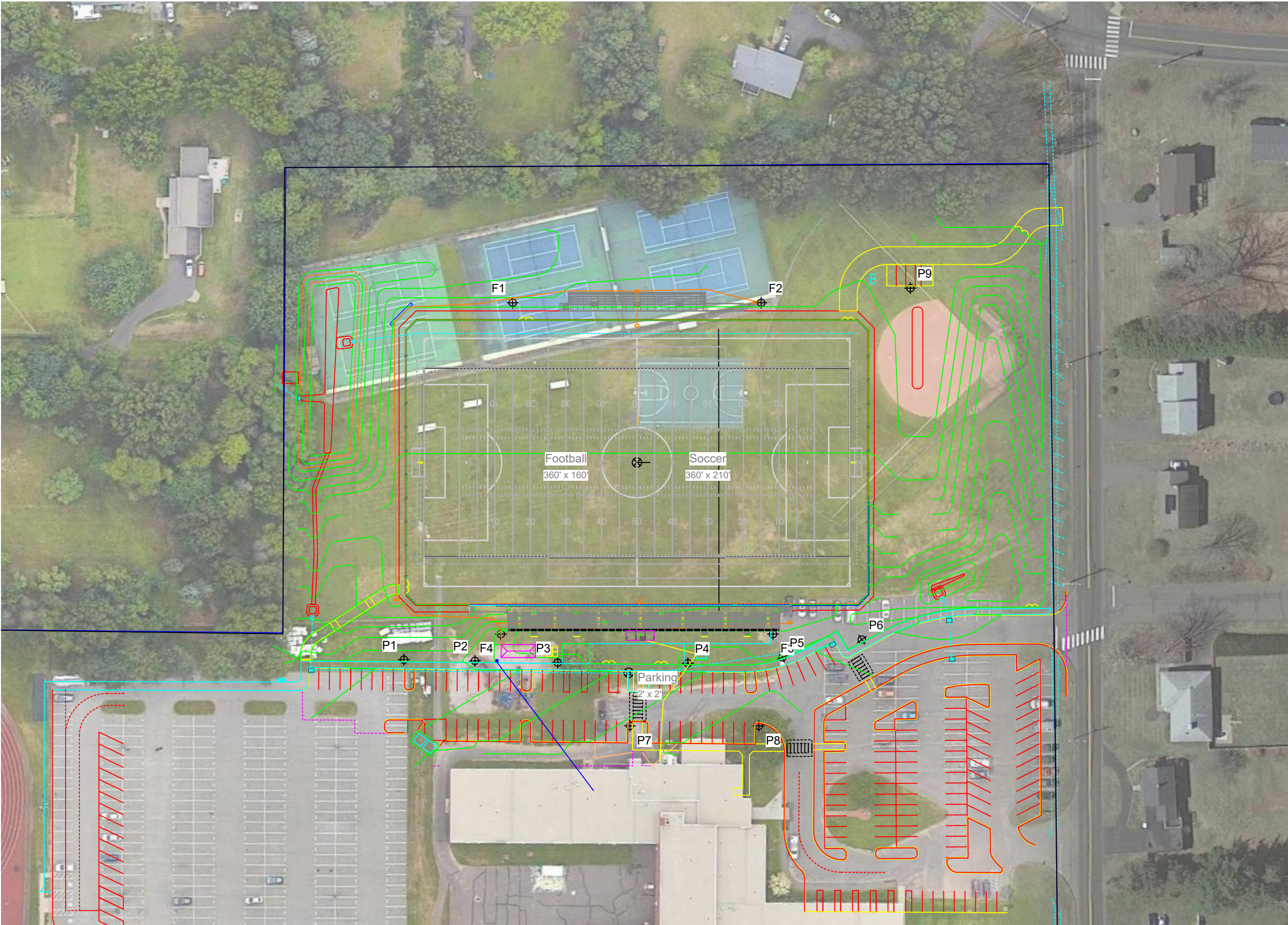
Guaranteed Performance: The ILLUMINATION described above is guaranteed per your Musco Warranty document and includes a 0.95 dirt depreciation factor.

Field Measurements: Individual field measurements may vary from computer-calculated predictions and should be taken in accordance with IESNA RP-6-15.

Electrical System Requirements: Refer to Amperage Draw Chart and/or the "Musco Control System Summary" for electrical sizing.

Installation Requirements: Results assume ± 3% nominal voltage at line side of the driver and structures located within 3 feet (1m) of design locations.





South Windsor HS Tennis And Turf

South Windsor, CT

Equipment Layout

INCLUDES:

- Football
- Parking
- Soccer
- Tennis 1-3
- Tennis 1-4
- Tennis 5-8

Electrical System Requirements: Refer to Amperage Draw Chart and/or the "Musco Control System Summary" for electrical sizing.

Installation Requirements: Results assume ± 3% nominal voltage at line side of the driver and structures located within 3 feet (1m) of design locations.

Equipment List For Areas Shown

Pole				Luminaires		
QTY	LOCATION	SIZE	GRADE ELEVATION	ABOVE GRADE LEVEL	LUMINAIRE TYPE	QTY/POLE
2	F1-F2	70'	-2'	68.3'	TLC-LED-1200	3
				68.3'	TLC-LED-1500	3
				68.3'	TLC-LED-900	1
				13.5'	TLC-BT-575	2
2	F3-F4	70'	14'	83.7'	TLC-LED-1200	3
				83.7'	TLC-LED-1500	3
				83.7'	TLC-LED-900	1
				39'	TLC-BT-575	2
9	P1-P9	20'	3'	23'	CREE OSQ	1
1	T1	30'	-	30.0'	TLC-LED-550	1
1	T2	30'	-	30.0'	TLC-LED-550	1
2	T3	30'	-	30.0'	TLC-LED-550	2
1	T4	30'	-0'	30.0'	TLC-LED-550	2
1	T6	30'	-	30.0'	TLC-LED-550	2
2	T7-T8	30'	-	30.0'	TLC-LED-550	1
1	T9	30'	-0'	30.0'	TLC-LED-550	2/2*
1	T10	30'	-0'	30.0'	TLC-LED-550	2/2*
2	T11-T12	30'	-	30.0'	TLC-LED-550	2
25	Totals					69

*This structure utilizes a back-to-back mounting configuration

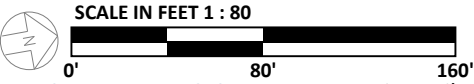
Single Luminaire Amperage Draw Chart

Driver Specifications (.90 min power factor)	Line Amperage Per Luminaire (max draw)						
	208 (60)	220 (60)	240 (60)	277 (60)	347 (60)	380 (60)	480 (60)
Single Phase Voltage	-	-	-	-	0.3	-	0.2
CREE OSQ	-	-	-	-	0.3	-	0.2
TLC-BT-575	3.3	3.2	2.9	2.5	2.0	1.8	1.5
TLC-LED-1200	6.9	6.5	6.0	5.2	4.2	3.8	3.0
TLC-LED-1500	8.4	7.9	7.3	6.3	5.0	4.6	3.6
TLC-LED-550	3.2	3.0	2.8	2.4	1.9	1.8	1.4
TLC-LED-900	5.2	4.9	4.5	3.9	3.1	2.9	2.3



We Make It Happen®

Not to be reproduced in whole or part without the written consent of Musco Sports Lighting, LLC. ©1981, 2023 Musco Sports Lighting, LLC.



ENGINEERED DESIGN By: Z.Morris • File #133191E • 21-Feb-24

Pole location(s) ⊕ dimensions are relative to 0,0 reference point(s) ⊗



South Windsor HS Tennis And Turf

South Windsor, CT

Equipment Layout

INCLUDES:

- Football
- Parking
- Soccer
- Tennis 1-3
- Tennis 1-4
- Tennis 5-8

Electrical System Requirements: Refer to Amperage Draw Chart and/or the "Musco Control System Summary" for electrical sizing.

Installation Requirements: Results assume ± 3% nominal voltage at line side of the driver and structures located within 3 feet (1m) of design locations.

Equipment List For Areas Shown						
Pole				Luminaires		
QTY	LOCATION	SIZE	GRADE ELEVATION	ABOVE GRADE LEVEL	LUMINAIRE TYPE	QTY/POLE
2	F1-F2	70'	-2'	68.3'	TLC-LED-1200	3
				68.3'	TLC-LED-1500	3
				68.3'	TLC-LED-900	1
				13.5'	TLC-BT-575	2
2	F3-F4	70'	14'	83.7'	TLC-LED-1200	3
				83.7'	TLC-LED-1500	3
				83.7'	TLC-LED-900	1
				39'	TLC-BT-575	2
9	P1-P9	20'	3'	23'	CREE OSQ	1
1	T1	30'	-	30.0'	TLC-LED-550	1
1	T2	30'	-	30.0'	TLC-LED-550	1
2	T3	30'	-	30.0'	TLC-LED-550	2
1	T4	30'	-0'	30.0'	TLC-LED-550	2
1	T6	30'	-	30.0'	TLC-LED-550	2
2	T7-T8	30'	-	30.0'	TLC-LED-550	1
1	T9	30'	-0'	30.0'	TLC-LED-550	2/2*
1	T10	30'	-0'	30.0'	TLC-LED-550	2/2*
2	T11-T12	30'	-	30.0'	TLC-LED-550	2
25	Totals					69

*This structure utilizes a back-to-back mounting configuration

Single Luminaire Amperage Draw Chart							
Driver Specifications (.90 min power factor)		Line Amperage Per Luminaire (max draw)					
Single Phase Voltage		208 (60)	220 (60)	240 (60)	277 (60)	347 (60)	480 (60)
CREE OSQ		-	-	-	-	0.3	0.2
TLC-BT-575		3.3	3.2	2.9	2.5	2.0	1.8
TLC-LED-1200		6.9	6.5	6.0	5.2	4.2	3.8
TLC-LED-1500		8.4	7.9	7.3	6.3	5.0	4.6
TLC-LED-550		3.2	3.0	2.8	2.4	1.9	1.8
TLC-LED-900		5.2	4.9	4.5	3.9	3.1	2.9