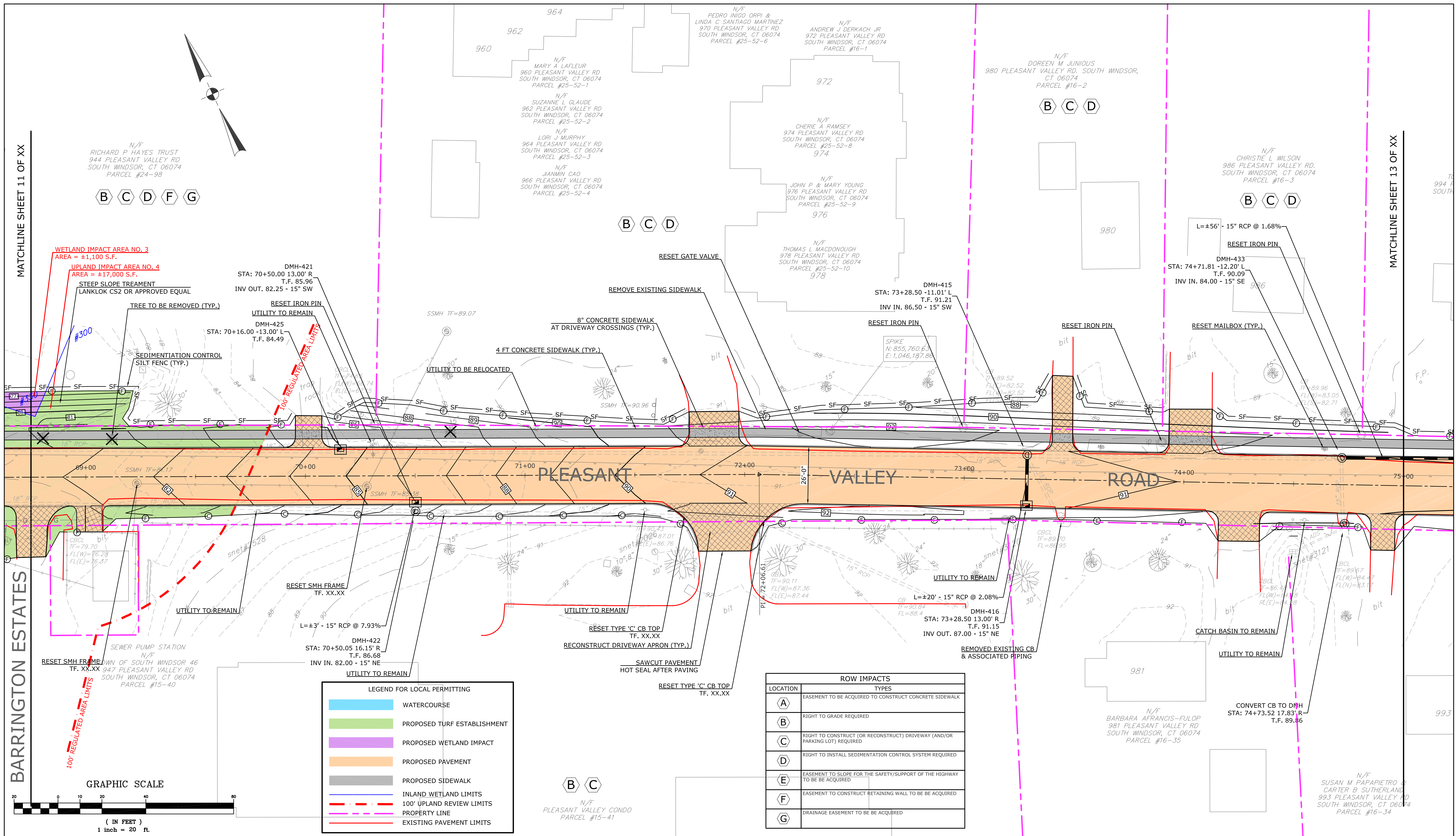

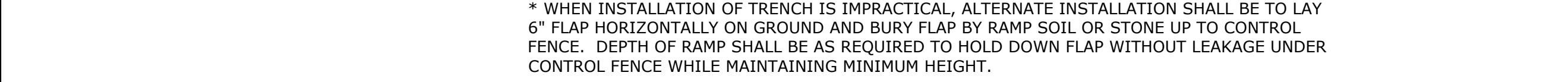


			SUPV.	S.R.M.	FOR PERMITTING ONLY	SCALE 1" = 20'	<div><div><div></div></div><div>WMC</div><div>CONSULTING ENGINEERS</div></div> <div>• WENGELL, McDONNELL & COSTELLO •</div> <div>87 HOLMES ROAD</div> <div>NEWINGTON, CT 06111</div> <div>(860) 667-9624</div>	PREPARED FOR TOWN OF SOUTH WINDSOR 1540 SULLIVAN AVENUE SOUTH WINDSOR, CT 06074	ROADWAY PLAN (STA. 62+50 - 68+75) RECONSTRUCTION OF PLEASANT VALLEY ROAD SOUTH WINDSOR, CONNECTICUT					
			DESIGN	R.E.B.					D PLEASANT VALLEY ROAD	PVR_PD	21117.10	—	SHEET	11
			DRAWN	R.E.B.										
			CHECKED	S.R.M.										
NO.	DATE	DESCRIPTION	DATE	02/08/23										
REVISIONS														
SIZE		PROJECT	FILE NAME	NUMBER	REV.	OF	14							

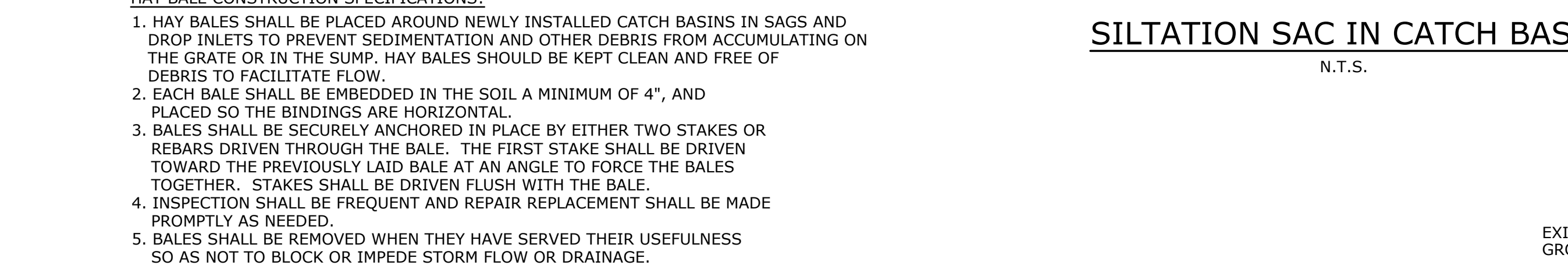


			SUPV.	S.R.M.	FOR PERMITTING ONLY		SCALE 1" = 20'	<div><div>WMC CONSULTING ENGINEERS</div><div>• WENGELL, McDONNELL & COSTELLO • 87 HOLMES ROAD NEWINGTON, CT 06111 (860) 667-9624</div></div>	PREPARED FOR TOWN OF SOUTH WINDSOR 1540 SULLIVAN AVENUE SOUTH WINDSOR, CT 06074	ROADWAY PLAN (STA. 68+75 - 75+00) RECONSTRUCTION OF PLEASANT VALLEY ROAD SOUTH WINDSOR, CONNECTICUT				
			DESIGN	R.E.B.						D PLEASANT VALLEY ROAD PVR_PD - 21117.10 -				
			DRAWN	R.E.B.						SIZE PROJECT FILE NAME NUMBER REV.				
			CHECKED	S.R.M.						OF 14				
NO.	DATE	DESCRIPTION												
REVISIONS			DATE	02/08/23										



REFER TO PAGE 5-11-35 "CONNECTICUT GUIDELINES FOR SOIL EROSION AND SEDIMENTATION CONTROL" AND PAGE 55 "ON-SITE MITIGATION FOR CONSTRUCTION ACTIVITIES".

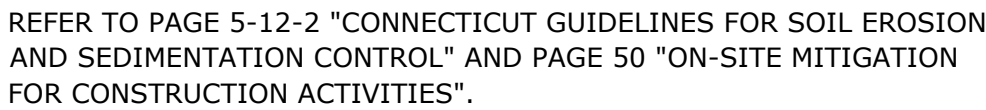
N.T.S.



N.T.S.

N.T.S.

N.T.S.



N.T.S.

[illegible]