

File Path: J:\DWG\GP2000481\Y21\Civil\PlanUnit 7C2000481.Y21\_COV-01.dwg, Layout: GI-001, Plotted: Wednesday, January 13, 2021, User: rrtigges Plotter: AUTOCAD PDF (GENERAL DOCUMENTATION).PC3 CTB File: FO.STB

# UNIT 7C

EVERGREEN WALK · SOUTH WINDSOR · CONNECTICUT

EVERGREEN WALK, LLC

JANUARY 14, 2021

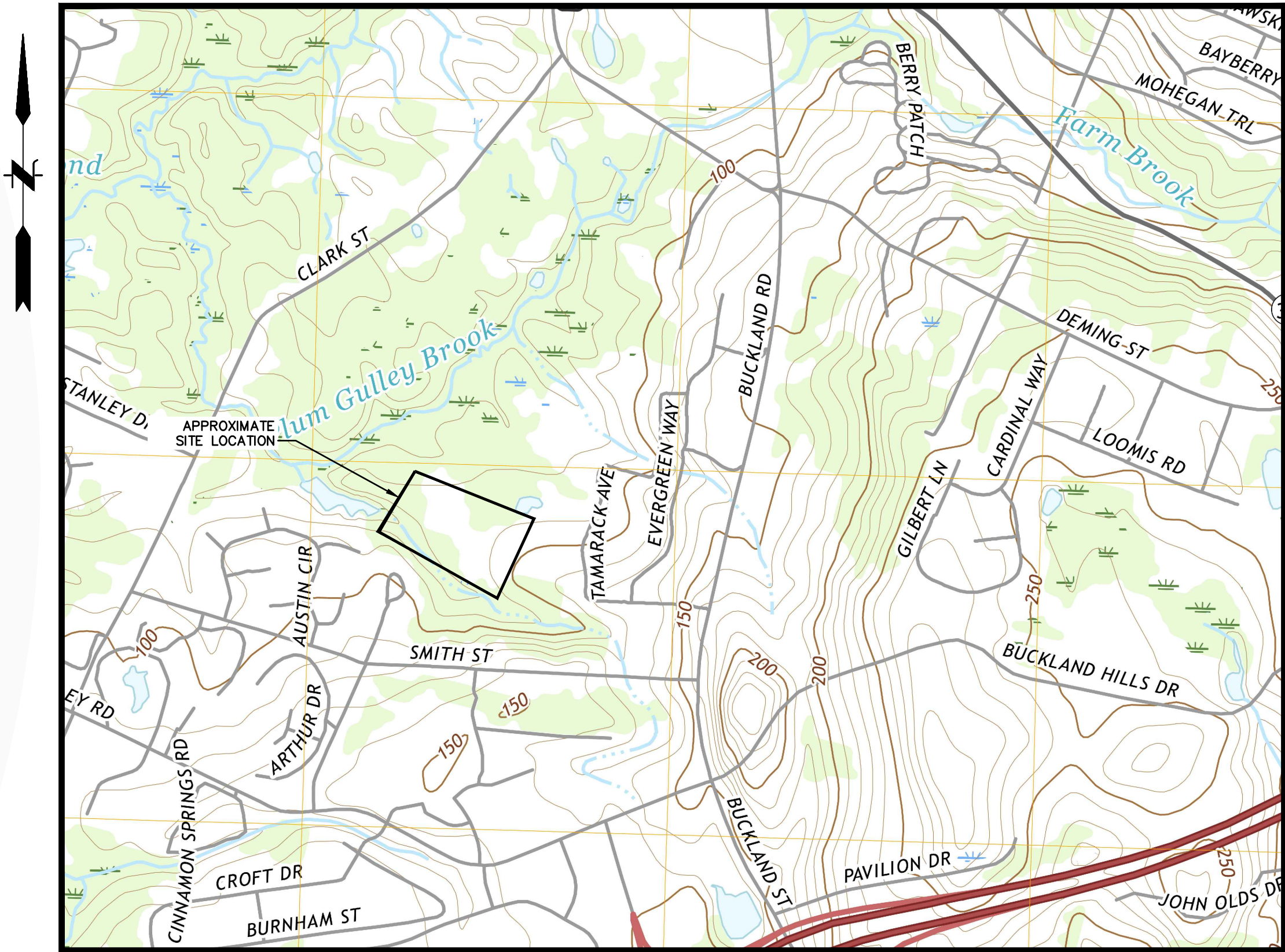
PREPARED FOR  
**EVERGREEN WALK, LLC**  
**SOUTH WINDSOR**  
100 EVERGREEN WAY,  
SOUTH WINDSOR, CT 06074



PREPARED BY  
**FUSS & O'NEILL**  
146 HARTFORD ROAD  
MANCHESTER, CONNECTICUT 06040  
860.646.2469  
www.fando.com

### SHEET INDEX

| <u>SHEET No.</u> | <u>SHEET TITLE</u>             |
|------------------|--------------------------------|
| GI-001           | COVER SHEET                    |
| GI-002           | AREA PLAN                      |
| CG-101           | GRADING PLAN                   |
| CG-102           | REGULATED AREAS IMPACT PLAN    |
| LP-101           | PLANTING PLAN, NOTES & DETAILS |
| CD-501           | SITE DETAILS & NOTES           |



LOCATION MAP  
SCALE: 1" = 1000'

PROJ. No.: 2000481.Y21  
DATE: JANUARY 2021

GI-001















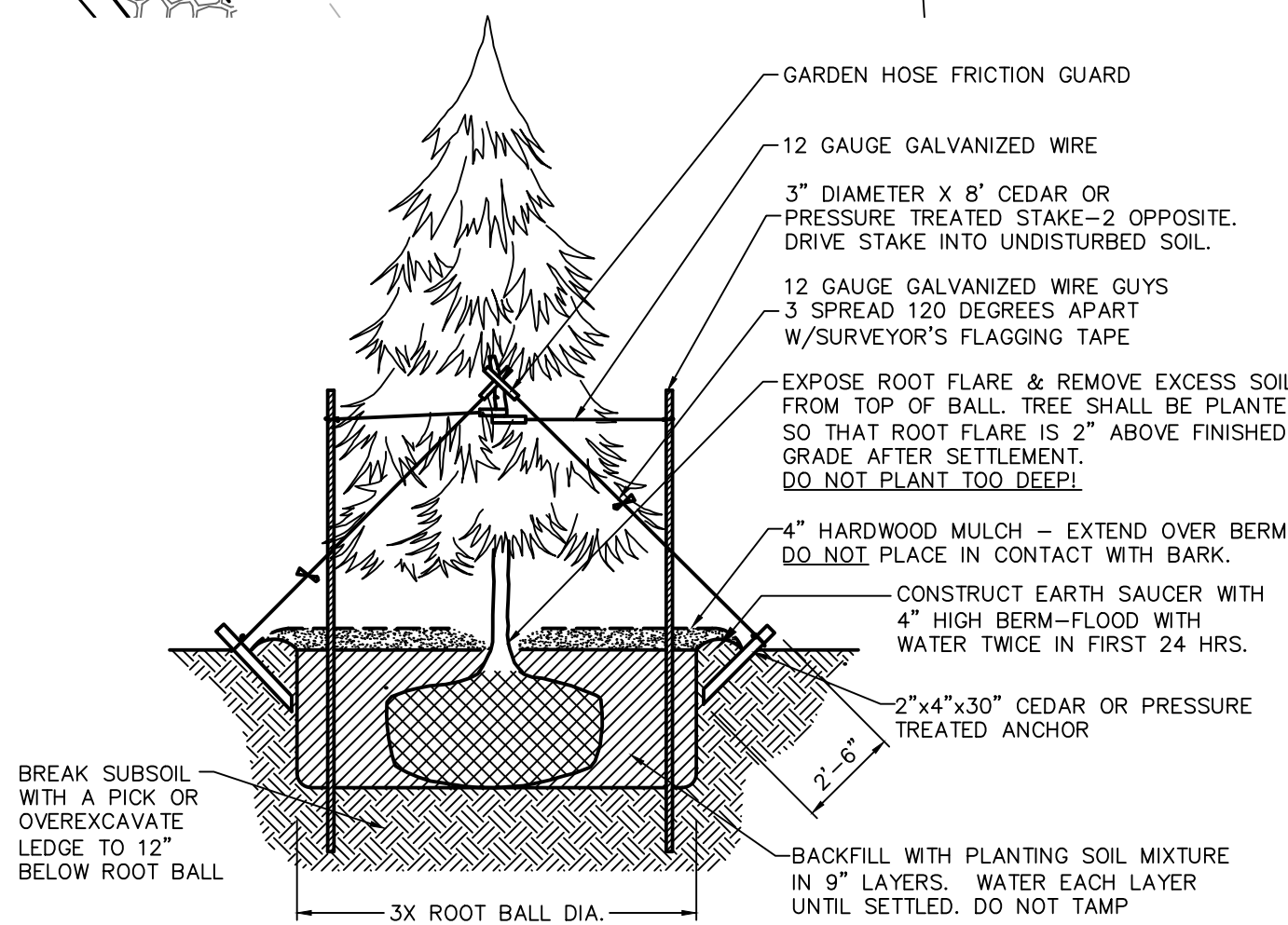
## PLANT LIST

KEY BOTANICAL NAME

| KEY   | BOTANICAL NAME             | COMMON NAME          | QTY. | SIZE     |
|-------|----------------------------|----------------------|------|----------|
| TREES |                            |                      |      |          |
| AC    | ABIES CONCOLOR             | WHITE FIR            | 5    | 6-7' HT. |
| JV    | JUNIPERUS VIRGINIANA       | EASTERN REDCEDAR     | 7    | 6-7' HT. |
| PM    | PSEUDOTSUGA MENZIESII      | DOUGLAS FIR          | 3    | 6-7' HT. |
| PS    | PINUS STROBUS 'FASTIGIATA' | FASTIGATE WHITE PINE | 12   | 6-7' HT. |

## PLANTING NOTES:

- ALL PLANTING MATERIAL TO BE NURSERY GROWN STOCK SUBJECT TO A.A.N. STANDARDS
- THE CONTRACTOR SHALL SUPPLY ALL PLANTS IN QUANTITIES SUFFICIENT TO COMPLETE THE WORK SHOWN ON THE DRAWINGS AND LISTED IN THE PLANT LIST. IN THE EVENT OF A DISCREPANCY BETWEEN QUANTITIES SHOWN IN THE PLANT LIST AND THOSE REQUIRED BY THE DRAWINGS, THE LARGER NUMBER SHALL APPLY.
- ALL PLANTS SHALL BE APPROVED PRIOR TO INSTALLATION AND SHALL BE LOCATED ON SITE BY THE CONTRACTOR FOR THE APPROVAL OF THE LANDSCAPE ARCHITECT. ANY INSTALLATIONS WHICH WERE NOT APPROVED BY THE LANDSCAPE ARCHITECT AND WHICH ARE SUBSEQUENTLY REQUESTED TO BE MOVED WILL BE DONE AT THE CONTRACTOR'S EXPENSE.
- PRECISE LOCATION OF ITEMS NOT DIMENSIONED ON THE PLAN ARE TO BE FIELD STAKED BY THE CONTRACTOR AND SHALL BE SUBJECT TO THE REQUIREMENTS SPECIFIED IN THE PREVIOUS NOTE.
- ALL SHRUB MASSINGS AND TREE PITS SHALL BE MULCHED TO A DEPTH OF 3" WITH SHREDDED PINE BARK MULCH.
- TREES SHALL NOT BE STAKED UNLESS OTHERWISE NOTED.
- THE CONTRACTOR IS RESPONSIBLE FOR ANY DAMAGED VEGETATION AND SHALL REPLACE OR REPAIR ANY DAMAGED MATERIAL, AT HIS OWN EXPENSE. THE CONTRACTOR SHALL CONTACT "CALL BEFORE YOU DIG" AT 1-800-922-4455 PRIOR TO CONSTRUCTION.
- ALL SHRUB AND GROUND COVER PLANTING AREAS SHALL HAVE CONTINUOUS BEDS OF TOPSOIL 12" DEEP. ALL SOD AND HYDROSEED AREAS SHALL HAVE A MINIMUM TOPSOIL BED OF 6".
- THE CONTRACTOR IS RESPONSIBLE FOR LOCATING ALL UTILITIES IN THE FIELD, WHERE PLANT MATERIAL MAY INTERFERE WITH UTILITIES, THE CONTRACTOR SHALL NOTIFY THE LANDSCAPE ARCHITECT TO COORDINATE THEIR INSTALLATION.
- FOR PLANTING SOIL MIX, SEE SPECIFICATIONS OR PLANTING DETAILS.
- ALL EXISTING RILL, GULLY OR CHANNEL EROSION SHALL BE FILLED WITH APPROPRIATE BACKFILL MATERIAL, FINE RAKED, SCARIFIED AND STABILIZED WITH APPROPRIATE VEGETATIVE MATERIAL AND / OR APPROPRIATE SEDIMENTATION AND EROSION CONTROL MEASURES.
- ADJUSTMENTS IN THE LOCATION OF THE PROPOSED PLANT MATERIAL AS A RESULT OF EXISTING VEGETATION TO REMAIN SHALL BE APPROVED BY THE LANDSCAPE ARCHITECT PRIOR TO INSTALLATION.
- THE CONTRACTOR IS RESPONSIBLE FOR ALL MAINTENANCE REPAIR AND REPLACEMENT OF PLANT MATERIAL, AS REQUIRED, FOR THE DURATION OF THE PROJECT AND SUBSEQUENT WARRANTY PERIOD.
- PLANTINGS INSTALLED IN THE DRY SUMMER MONTHS AND / OR LAWN SEEDS OUT OF SPRING OR FALL PERIODS, IF ALLOWED BY OWNER, WILL REQUIRE AGGRESSIVE IRRIGATION PROGRAMS AT THE CONTRACTOR'S EXPENSE, UNLESS OTHERWISE DIRECTED BY THE OWNER.
- UPON COMPLETION OF PLANTING, REMOVE FROM SITE ALL EXCESS SOIL, MULCH, AND MATERIALS AND DEBRIS RESULTING FROM WORK OPERATIONS. CLEAN UP SHOULD BE COMPLETED AT THE END OF EACH WORKING DAY. RESTORE TO ORIGINAL CONDITIONS ALL DAMAGED PAVEMENTS, PLANTING AREAS, STRUCTURES AND LAWN AREAS RESULTING FROM LANDSCAPING OPERATIONS.
- CONTRACTOR SHALL SURVEY, LOCATE, AND PROTECT ALL TREES WITHIN AREAS SHOWN AS "EXISTING VEGETATION TO REMAIN" WITHIN THE DEVELOPMENT ENVELOPE FOR REVIEW BY L.A. PRIOR TO CLEARING OPERATIONS.
- CONTRACTOR TO RESEED ALL DISTURBED AREAS.



- NOTES:
- TREE SHALL BE SET PLUMB.
  - DO NOT CUT MAIN LEADER. PRUNE ONLY CROSSOVER LIMBS, CO-DOMINANT LEADERS AND ALL DEAD OR DAMAGED BRANCHES.
  - SPRAY WITH ANTIDESICCANT IN ACCORDANCE WITH MFG.'S RECOMMENDATIONS.
  - TREES LESS THAN 8' HEIGHT SHALL BE STAKED.
  - TREES GREATER THAN 8' HEIGHT SHALL BE GUYED AND ANCHORED.
  - STAKES SHALL BE REMOVED AT THE END OF THE FIRST GROWING SEASON AFTER PLANTING.

## EVERGREEN TREE PLANTING

NOT TO SCALE

EVERGREEN WALK, LLC

PLANTING PLAN, NOTES & DETAILS

UNIT 7C EVERGREEN WALK

SOUTH WINDSOR

CONNECTICUT

|               |                 |
|---------------|-----------------|
| SCALE:        | HORZ.: 1" = 20' |
| VERT.:        |                 |
| DATUM:        |                 |
| HORZ.:        |                 |
| VERT.:        |                 |
| GRAPHIC SCALE |                 |

**FUSS & O'NEILL**  
146 HARTFORD ROAD  
NORWICH, CONNECTICUT 06460  
860.646.2460  
www.fandco.com

PROJ. No.: 2000481.Y21  
DATE: 1/14/2021

LP-101

