

REHABILITATION OF THREE CULVERTS AT EVERGREEN WALK

501 EVERGREEN WAY
SOUTH WINDSOR, CT

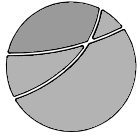
May 11, 2020

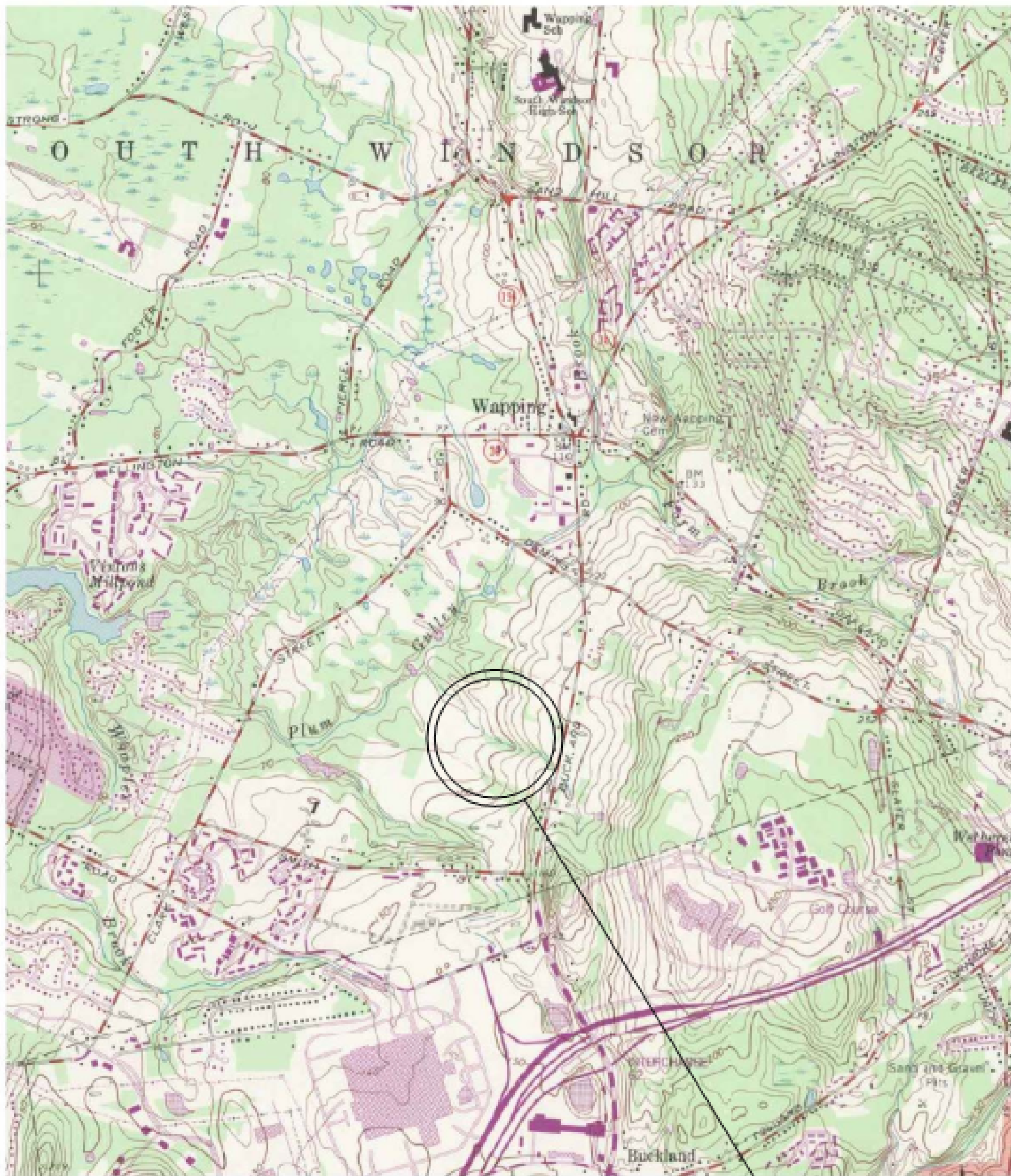
PERMIT PLANS

OWNER

Prepared For:  OAG Shopping Centers
Small Details | Big Experience(s)
2650 Thousand Oaks Blvd., Suite 2200
Memphis, TN 38118
(901) 761-7604
www.pongle.com

CONSULTANTS

Prepared By:  benesch
120 Hebron Avenue
Glastonbury, CT 06033
P 860-633-8341
F 860-633-1068
www.Benesch.com



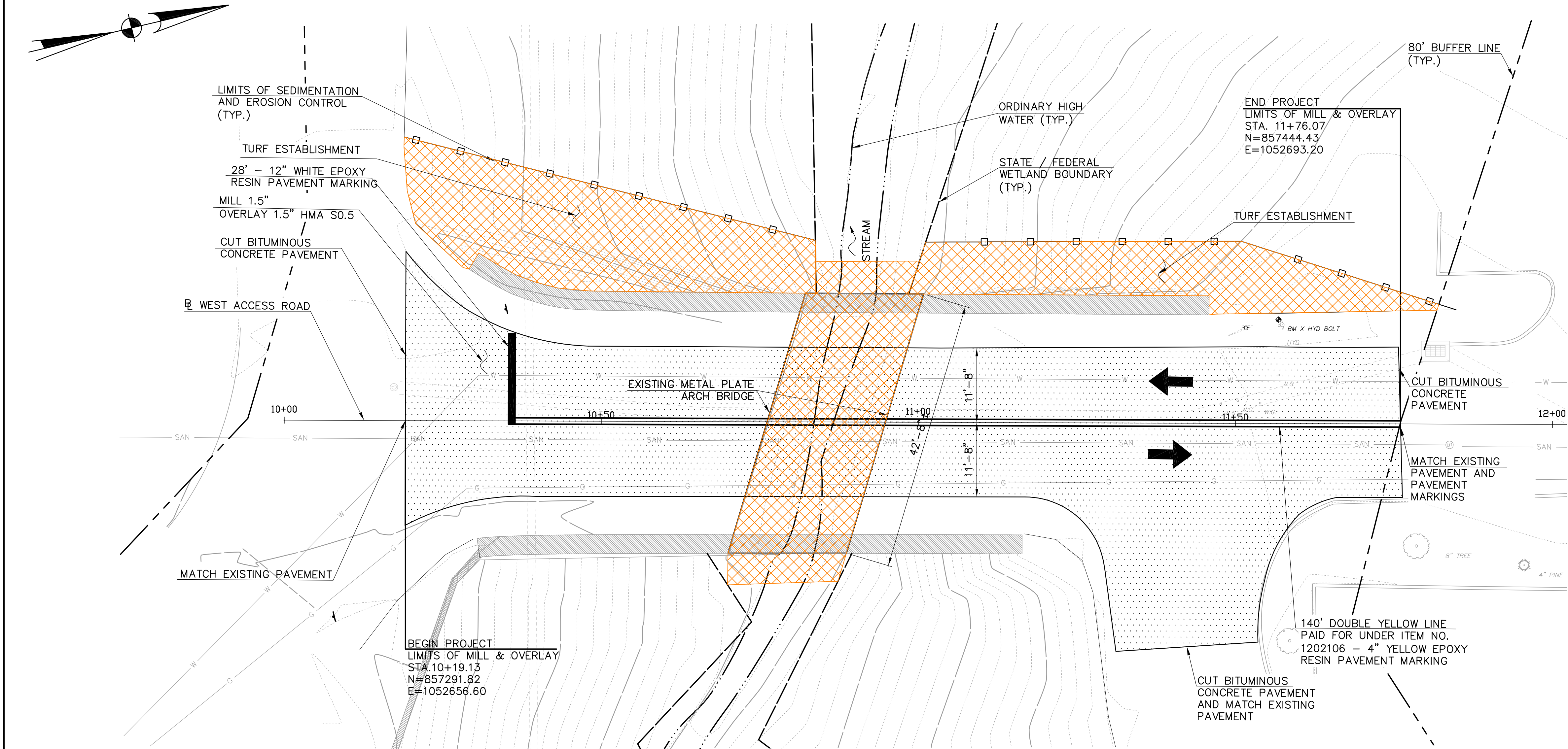
USGS QUAD MAP
MAP # 38 MANCHESTER

PROJECT LOCATION

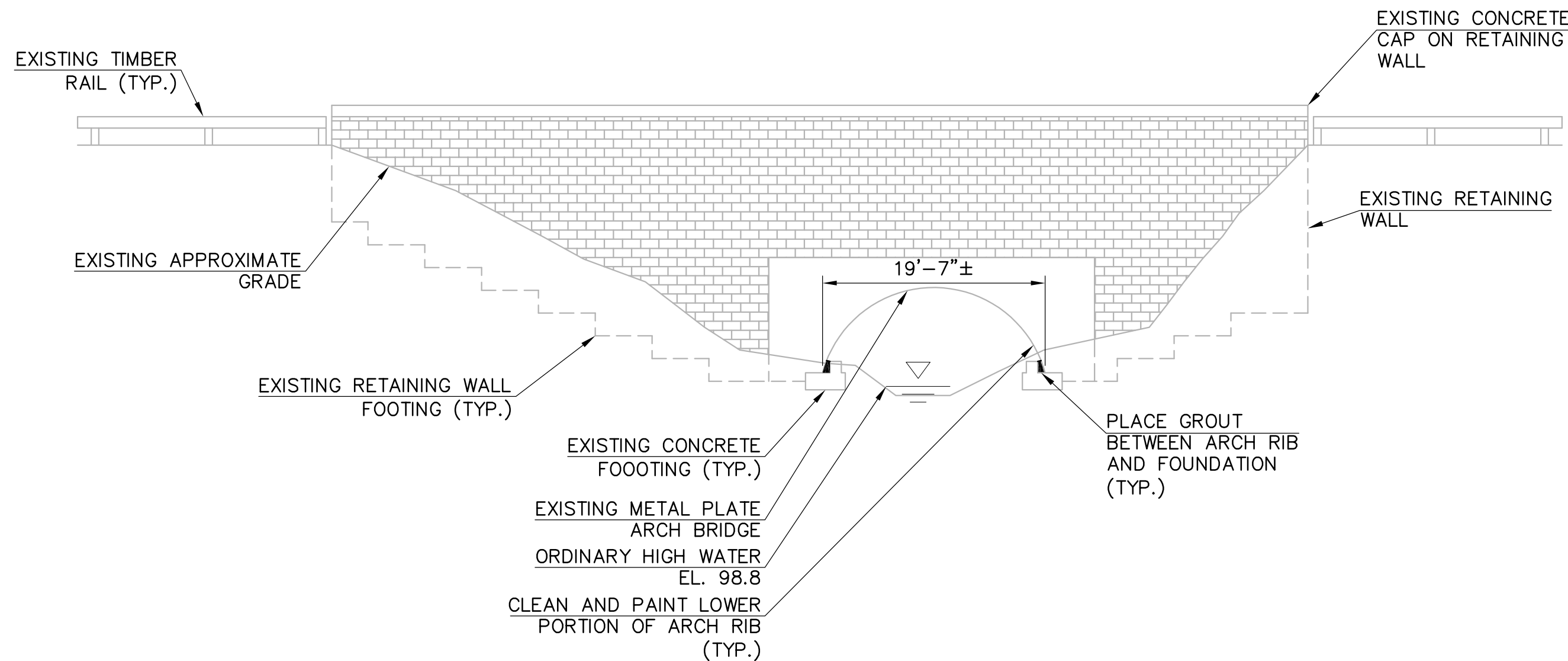
LOCATION MAP



200 0 400 800 1200 feet
SCALE: 1" = 400'



GENERAL PLAN
SCALE: 1" = 10'-0"



EAST ELEVATION
SCALE: 1" = 10'-0"

GENERAL NOTES:

SPECIFICATIONS: CONNECTICUT DEPARTMENT OF TRANSPORTATION FORM 817 (2016), SUPPLEMENTAL SPECIFICATIONS DATED JULY 2019 AND SPECIAL PROVISIONS.

DESIGN SPECIFICATIONS: AASHTO LRFD BRIDGE DESIGN SPECIFICATIONS, 2017 8TH EDITION, WITH THE INTERIM SPECIFICATIONS AND AS SUPPLEMENTED BY THE CONNECTICUT DEPARTMENT OF TRANSPORTATION BRIDGE DESIGN MANUAL (2003).

BITUMINOUS CONCRETE OVERLAY: THIS SHALL CONSIST OF ONE LIFT OF HMA SO.5 (1.5 INCH THICK). THE CONTRACTOR SHALL TAKE SURVEY ELEVATIONS OF THE EXISTING ROAD PRIOR TO MILLING. THE FINAL OVERLAY SHALL MATCH THE ORIGINAL ELEVATIONS AND CROSS SLOPES OF THE EXISTING OVERLAY.

DIMENSIONS: ALL ELEVATIONS ARE GIVEN IN FEET, WHEN ELEVATIONS ARE GIVEN TO LESS THAN THREE DECIMAL PLACES, THE OMITTED DIGITS SHALL BE ASSUMED TO BE ZERO.

UTILITIES: THE CONTRACTOR SHALL PROTECT ALL EXISTING UTILITIES LOCATED WITHIN THE VICINITY OF THE CONSTRUCTION SITE. THE CONTRACTOR SHALL TAKE NECESSARY PRECAUTIONS WHEN WORKING NEAR UTILITIES SO AS NOT TO DISTURB THEM OR PLACE ANY LOAD OR EQUIPMENT ON THEM. ALL UTILITY COMPANIES SHALL BE NOTIFIED 48 HOURS PRIOR TO ANY WORK AFFECTING CABLES, CONDUITS, OR OTHER UTILITIES.

EXISTING DIMENSIONS: DIMENSIONS OF THE EXISTING STRUCTURE SHOWN ON THESE PLANS ARE FOR GENERAL REFERENCE ONLY. THEY ARE BASED ON ROUGH FIELD MEASUREMENTS OR EXISTING DRAWINGS AND ARE NOT GUARANTEED. THE CONTRACTOR SHALL TAKE ALL FIELD MEASUREMENTS NECESSARY TO ASSURE PROPER FIT OF THE FINISHED WORK AND SHALL ASSUME FULL RESPONSIBILITY FOR THEIR ACCURACY. WHEN SHOP DRAWINGS BASED ON FIELD MEASUREMENTS ARE SUBMITTED FOR APPROVAL, THE FIELD MEASUREMENTS SHALL ALSO BE SUBMITTED FOR REFERENCE BY THE REVIEWER.

CONSTRUCTION ACCESS NOTES:

CONSTRUCTION ACCESS SHALL BE LIMITED TO NORTHWEST AND SOUTHWEST CORNERS OF THE BRIDGE TO MINIMIZE IMPACT TO VEGETATION SURROUNDING THE BRIDGE

LEGEND	
WETLAND LIMIT (STATE / FEDERAL)	---
REGULATORY BUFFER LIMITS	- - -
TEMPORARY IMPACT	

- NOTES:
- THE CONTRACTOR SHALL NOT WORK WITHIN THE LIMITS OF THE WETLANDS AND WATERCOURSES WITH THE EXCEPTION OF THOSE AREAS DELINEATED AS TEMPORARY OR PERMANENT IMPACTS TO THE WETLANDS AND WATERCOURSE. ALL DISTURBED AREAS SHALL BE RESTORED.
 - THE APPLICANT WILL ONLY SUBMIT REVISIONS TO THE TOWN OF SOUTH WINDSOR AND ACOE FOR CHANGES TO THE DESIGN THAT WILL AFFECT REGULATED AREAS. REVISIONS TO THE AFFECTED REGULATORY AREAS WILL BE SUBMITTED BY THE TOWN OF SOUTH WINDSOR TO CTDEEP.

IMPACT AREA TABLE (SF [AC.])				
	WETLAND IMPACTS	WATERWAY IMPACTS	BUFFER IMPACTS	TOTAL
PERMANENT IMPACTS	0 [.0000]	0 [.0000]	0 [.0000]	0 [.0000]
TEMPORARY IMPACTS	705 [.0162]	225 [.0052]	1570 [.0000]	2500 [.0360]
TOTAL IMPACTS	705 [.0162]	225 [.0052]	1570 [.0000]	2500 [.0360]

REV.	DATE	DESCRIPTION	SHEET. NO.

MANUAL REVISIONS TO THIS DOCUMENT ARE PROHIBITED. ALL REVISIONS MUST BE DONE TO ELECTRONIC MEDIA.



DESIGNER: M. HABEK
DRAFTER: M. HABEK
CHECKED BY: R. MEARS
DATE CHECKED: 4/17/2020

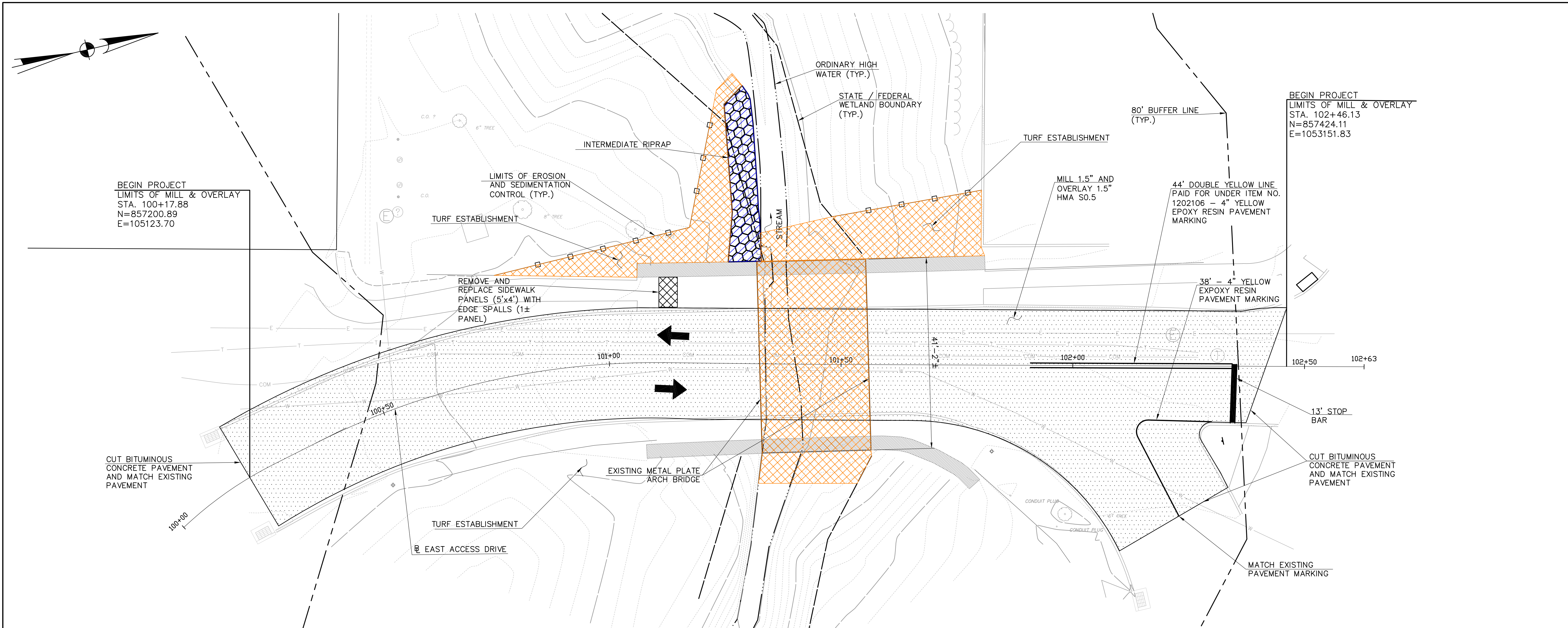


EVERGREEN WALK LIFESTYLE CENTER, LLC

PROJECT TITLE: REHABILITATION OF THREE CULVERTS AT EVERGREEN WALK
SCALE AS NOTED
PLOTTED: 4/17/2020

TOWN: SOUTH WINDSOR
DRAWING TITLE: BRIDGE NO. 1
GENERAL PLAN AND ELEVATION

PROJECT NO.: 70549.01
DRAWING NO.: S-1
SHEET NO.: 2

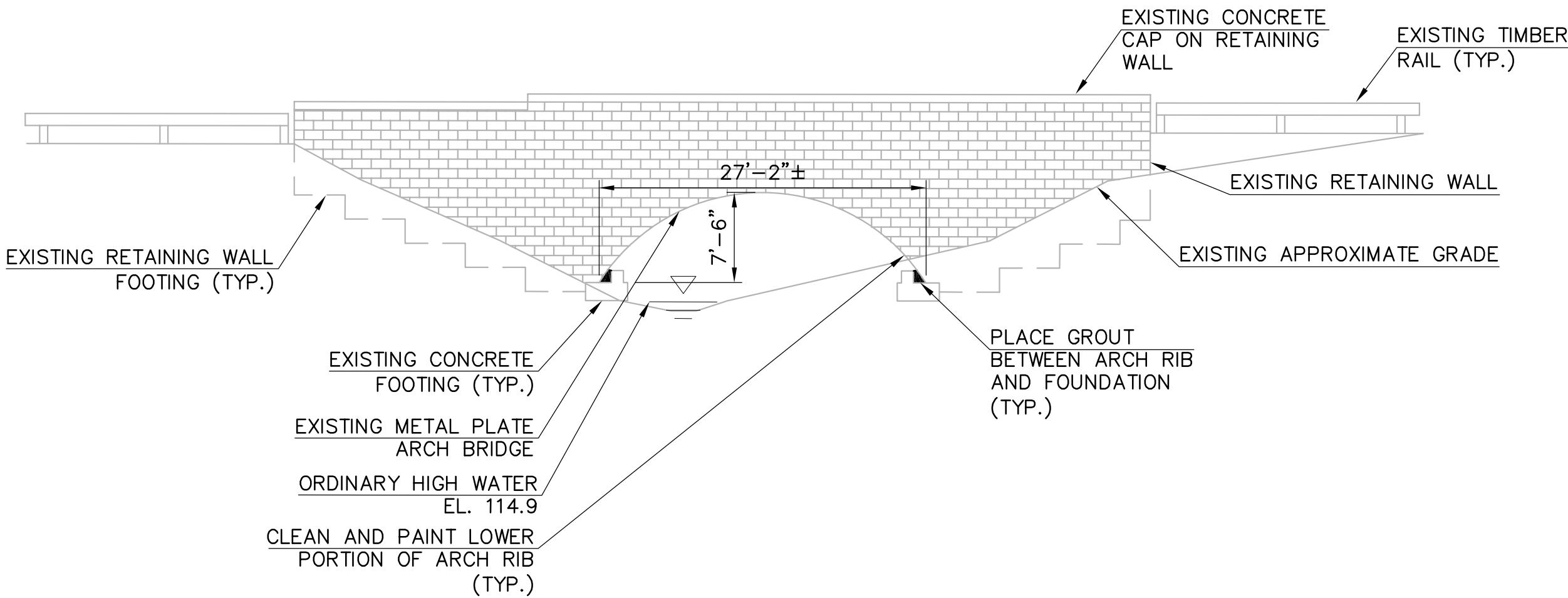


CONSTRUCTION ACCESS NOTES:

CONSTRUCTION ACCESS SHALL BE LIMITED TO NORTHWEST AND SOUTHWEST CORNERS OF THE BRIDGE TO MINIMIZE IMPACT TO VEGETATION SURROUNDING THE BRIDGE

LEGEND	
WETLAND LIMIT (STATE / FEDERAL)	---
REGULATORY BUFFER LIMITS	- - -
PERMANENT IMPACT	
TEMPORARY IMPACT	

- NOTES:
- THE CONTRACTOR SHALL NOT WORK WITHIN THE LIMITS OF THE WETLANDS AND WATERCOURSES WITH THE EXCEPTION OF THOSE AREAS DELINEATED AS TEMPORARY OR PERMANENT IMPACTS TO THE WETLANDS AND WATERCOURSE. ALL DISTURBED AREAS SHALL BE RESTORED.
 - THE APPLICANT WILL ONLY SUBMIT REVISIONS TO THE TOWN OF SOUTH WINDSOR AND ACOE FOR CHANGES TO THE DESIGN THAT WILL AFFECT REGULATED AREAS. REVISIONS TO THE AFFECTED REGULATORY AREAS WILL BE SUBMITTED BY THE TOWN OF SOUTH WINDSOR TO CTDEEP.



EAST ELEVATION

SCALE: 1" = 10'-0"

IMPACT AREA TABLE (SF [AC.])				
	WETLAND IMPACTS	WATERWAY IMPACTS	BUFFER IMPACTS	TOTAL
PERMANENT IMPACTS	150 [.0035]	0 [.0000]	70 [.0016]	220 [.0051]
TEMPORARY IMPACTS	925 [.0212]	350 [.0081]	780 [.0179]	2055 [.0472]
TOTAL IMPACTS	1075 [.0247]	350 [.0081]	850 [.0195]	2275 [.0523]

REV.	DATE	DESCRIPTION	SHEET. NO.
		REVISIONS	

MANUAL REVISIONS TO THIS DOCUMENT ARE PROHIBITED. ALL REVISIONS MUST BE DONE TO ELECTRONIC MEDIA.

CONSULTANT:

DESIGNER: M. HABEK
DRAFTER: M. HABEK
CHECKED BY: R. MEARS
DATE CHECKED: 4/17/2020

POAG Shopping Centers
Small Details | Big Experience(s)
2650 Thousand Oaks Blvd., Suite 2200
Memphis, TN 38118
(901) 764-7604
www.poagllc.com

EVERGREEN WALK
LIFESTYLE CENTER,
LLC

PROJECT TITLE:
REHABILITATION OF THREE CULVERTS
AT EVERGREEN WALK
SCALE AS NOTED
PLOTTED: 4/17/2020

TOWN:
SOUTH WINDSOR
DRAWING TITLE:
BRIDGE NO. 3
GENERAL PLAN AND ELEVATION

PROJECT NO.: 70549.01
DRAWING NO.: S-3
SHEET NO.: 4

SUGGESTED SEQUENCE OF CONSTRUCTION:

BRIDGE 1:

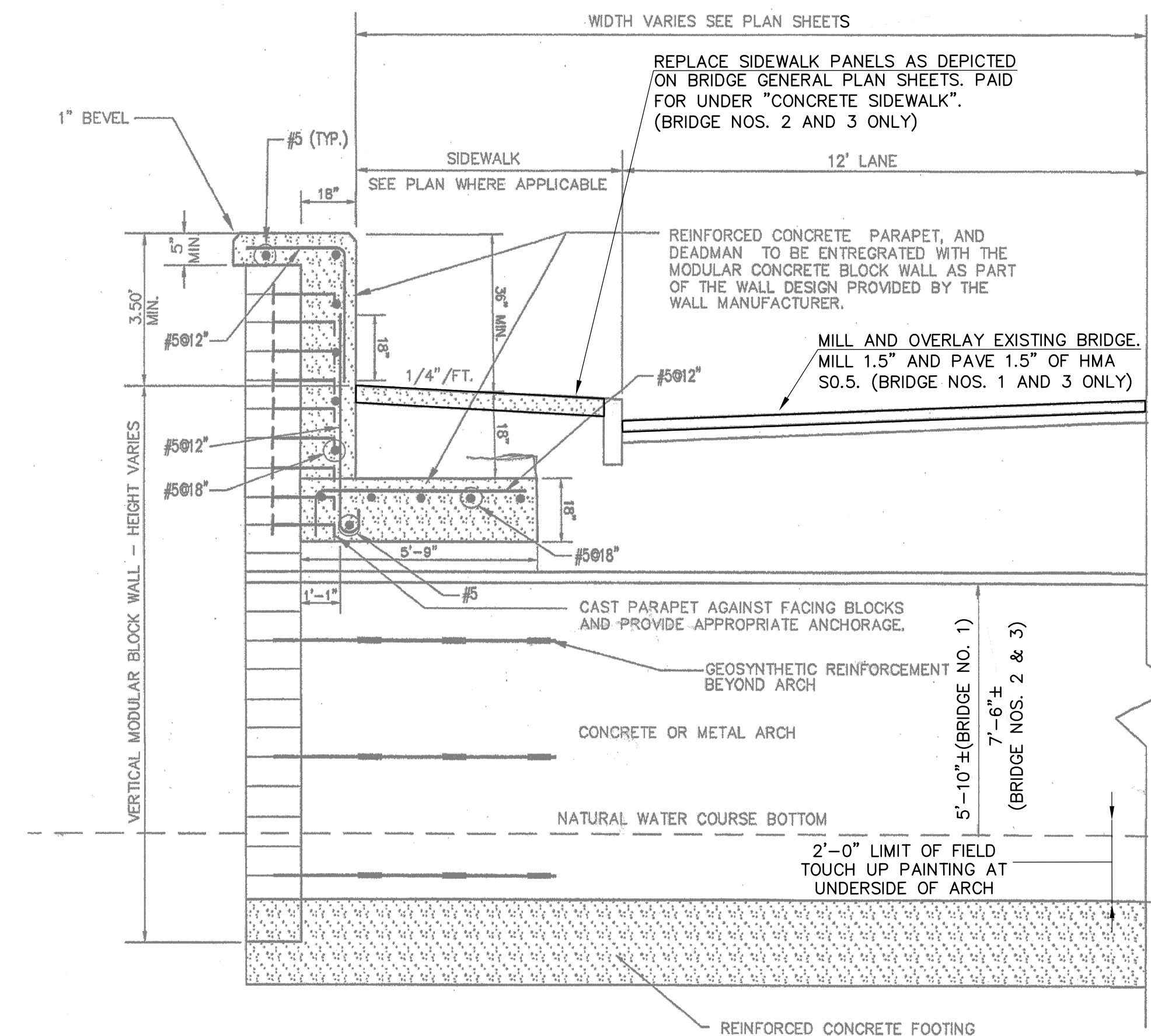
1. INSTALL SEDIMENTATION AND EROSION CONTROL SYSTEM.
2. ESTABLISH PROTOCOL FOR CONTAINING RUST AND OTHER MATERIALS DURING HAND-TOOL CLEANING AS OUTLINED IN THE CONTRACTOR'S SUBMITTAL TO THE ENGINEER.
3. REMOVE DIRT, DEBRIS, AND WATER IN THE AREA BETWEEN THE EXISTING METAL PLATE ARCH AND THE EXISTING CONCRETE FOUNDATION.
4. REMOVE ANY AREAS OF RUST AT THE METAL PLATE ARCH WITHIN THE PAINTING LIMITS.
5. PRESSURE GROUT THE AREA BETWEEN THE EXISTING METAL PLATE ARCH AND THE EXISTING CONCRETE FOUNDATION.
6. FIELD TOUCH UP PAINT THE METAL PLATE ARCH AT THE SPRING LINE.
7. CLOSE ROADWAY AS ALLOWED IN THE PROSECUTION AND PROGRESS AND INSTALL APPLICABLE SIGNAGE.
8. MILL EXISTING OVERLAY TO LIMITS AND DEPTHS SHOWN ON THE PLAN.
9. INSTALL NEW OVERLAY MATCHING THE EXISTING ROADWAY ELEVATIONS AND CROSS SLOPES.
10. REMOVE ROAD CLOSURE SIGNAGE.
11. INSTALL FINAL PAVEMENT MARKINGS.
12. INSTALL TURF ESTABLISHMENT IN IMPACTED AREAS.
13. REMOVE SEDIMENTATION AND EROSION CONTROL SYSTEM.

BRIDGE 2:

1. INSTALL SEDIMENTATION AND EROSION CONTROL SYSTEM.
2. ESTABLISH PROTOCOL FOR CONTAINING RUST AND OTHER MATERIALS DURING HAND-TOOL CLEANING AS OUTLINED IN THE CONTRACTOR'S SUBMITTAL TO THE ENGINEER.
3. REMOVE DIRT, DEBRIS, AND WATER IN THE AREA BETWEEN THE EXISTING METAL PLATE ARCH AND THE EXISTING CONCRETE FOUNDATION.
4. REMOVE ANY AREAS OF RUST AT THE METAL PLATE ARCH WITHIN THE PAINTING LIMITS.
5. PRESSURE GROUT THE AREA BETWEEN THE EXISTING METAL PLATE ARCH AND THE EXISTING CONCRETE FOUNDATION.
6. FIELD TOUCH UP PAINT THE METAL PLATE ARCH AT THE SPRING LINE.
7. INSTALL AREA DRAIN, DRAINAGE PIPE AND INTERMEDIATE RIPRAP.
8. PLACE TEMPORARY SIDEWALK CLOSURE SIGNAGE.
9. REMOVE AND REPLACE DETERIORATED PANELS OF SIDEWALKS
10. REMOVE SIDEWALK CLOSURE SIGNAGE.
11. INSTALL TURF ESTABLISHMENT IN IMPACTED AREAS.
12. REMOVE SEDIMENTATION AND EROSION CONTROL SYSTEM

BRIDGE 3:

1. INSTALL SEDIMENTATION AND EROSION CONTROL SYSTEM.
2. ESTABLISH PROTOCOL FOR CONTAINING RUST AND OTHER MATERIALS DURING HAND-TOOL CLEANING AS OUTLINED IN THE CONTRACTOR'S SUBMITTAL TO THE ENGINEER.
3. REMOVE DIRT, DEBRIS, AND WATER IN THE AREA BETWEEN THE EXISTING METAL PLATE ARCH AND THE EXISTING CONCRETE FOUNDATION.
4. REMOVE ANY AREAS OF RUST AT THE METAL PLATE ARCH WITHIN THE PAINTING LIMITS.
5. PRESSURE GROUT THE AREA BETWEEN THE EXISTING METAL PLATE ARCH AND THE EXISTING CONCRETE FOUNDATION.
6. FIELD TOUCH UP PAINT THE METAL PLATE ARCH AT THE SPRING LINE.
7. INSTALL INTERMEDIATE RIPRAP AS SHOWN ON THE PLANS.
8. CLOSE ROADWAY AND SIDEWALK AS ALLOWED IN THE PROSECUTION AND PROGRESS AND INSTALL APPLICABLE SIGNAGE.
9. REMOVE AND REPLACE DETERIORATED PANELS OF SIDEWALKS.
10. MILL EXISTING OVERLAY TO LIMITS AND DEPTHS SHOWN ON THE PLAN.
11. INSTALL NEW OVERLAY MATCHING THE EXISTING ROADWAY ELEVATIONS AND CROSS SLOPES.
12. REMOVE ROAD AND SIDEWALK CLOSURE SIGNAGE.
13. INSTALL FINAL PAVEMENT MARKINGS.
14. INSTALL TURF ESTABLISHMENT IN IMPACTED AREAS.
15. REMOVE SEDIMENTATION AND EROSION CONTROL SYSTEM

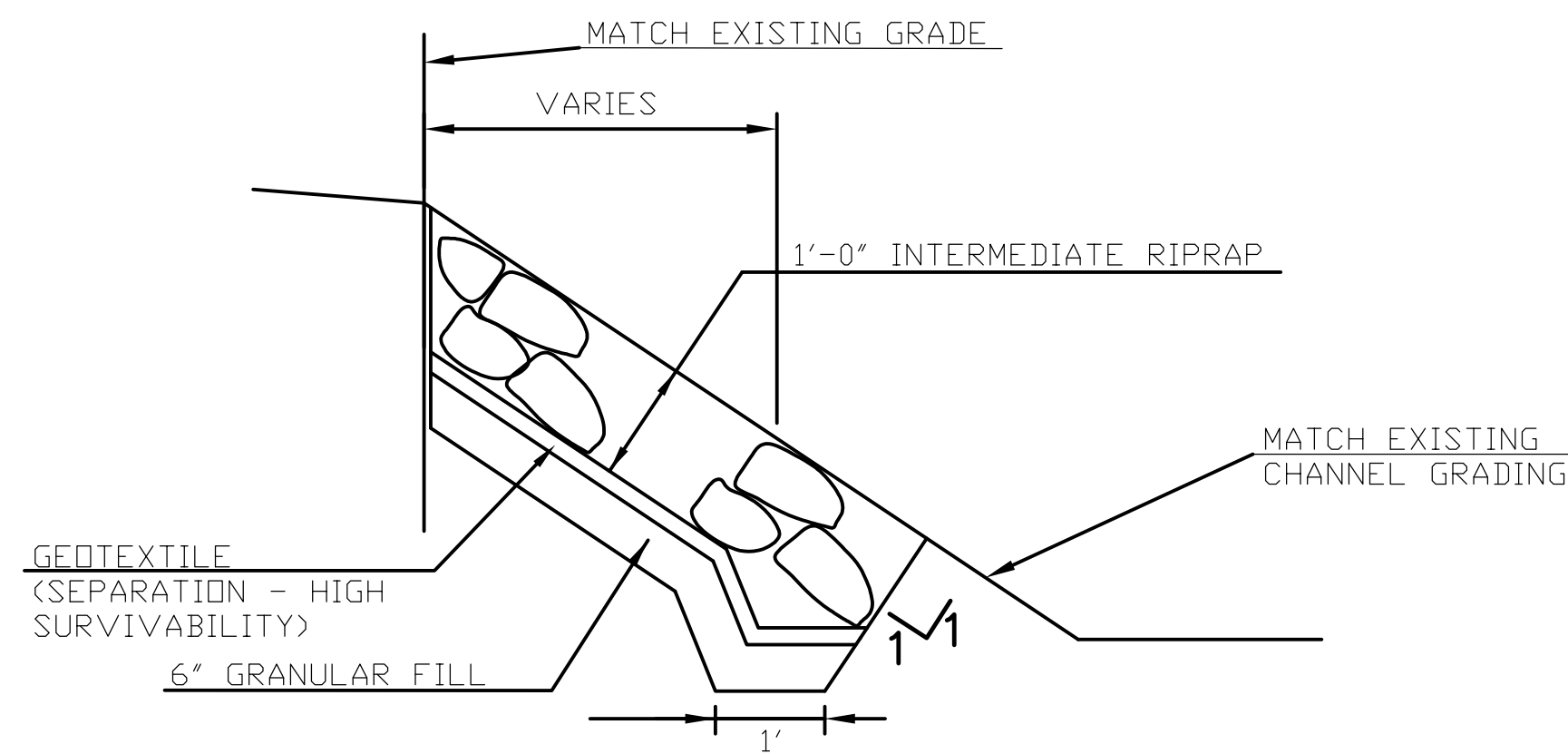


EXISTING HALF-SECTION

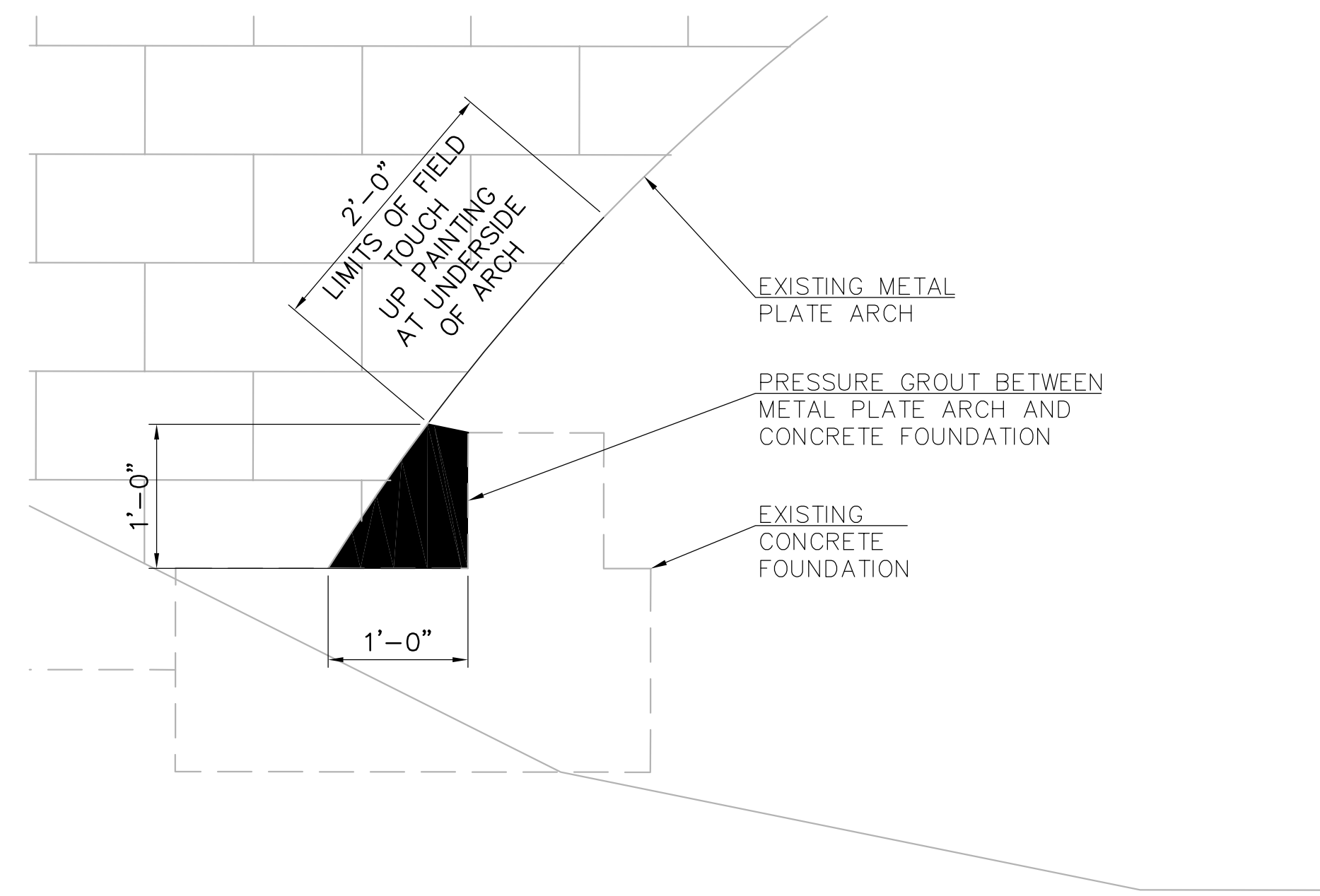
NOT TO SCALE

NOTE: SECTION FROM ORIGINAL DESIGN PLANS,
PROVIDED FOR INFORMATION PURPOSES ONLY

[illegible]

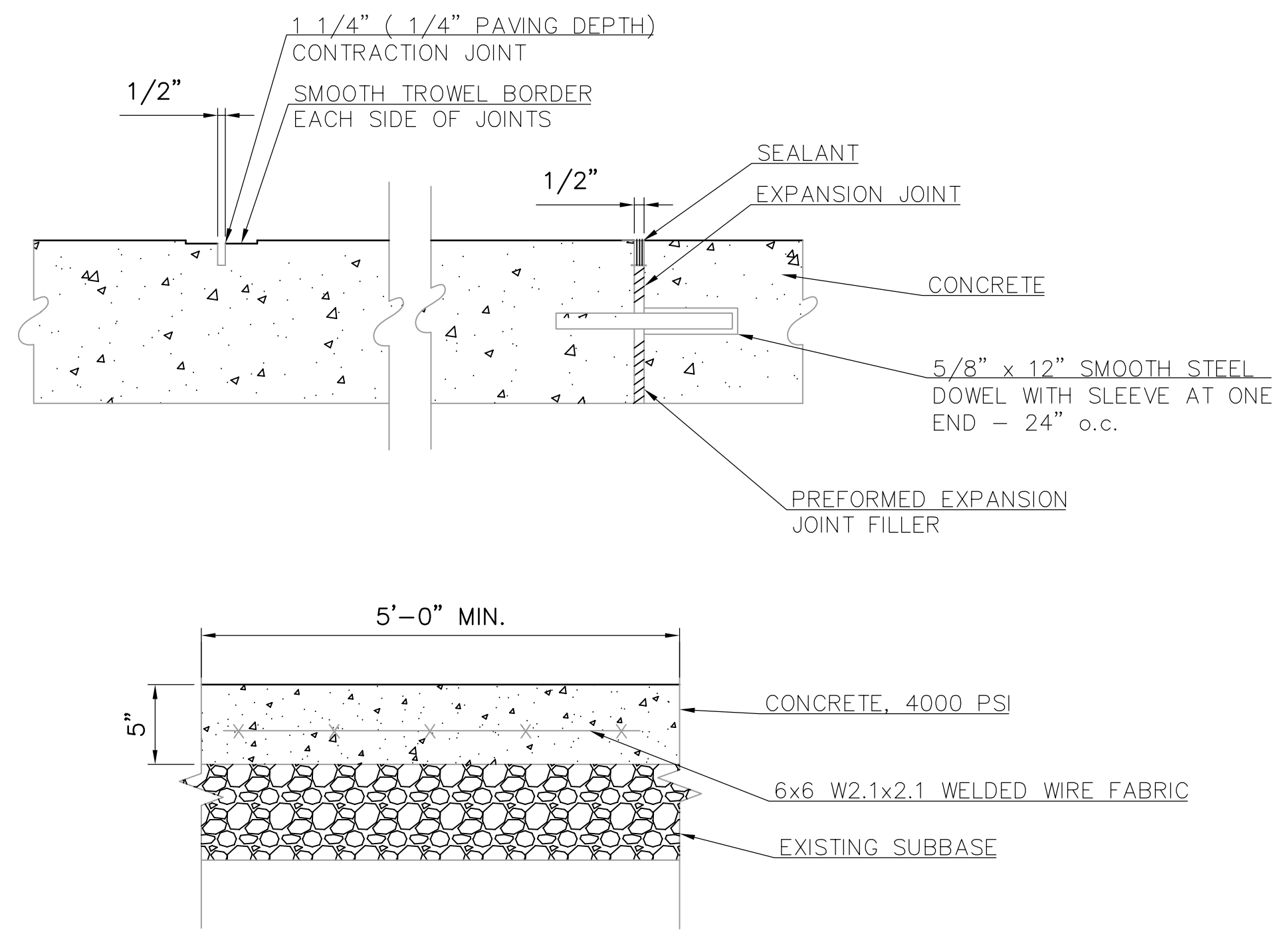


INTERMEDIATE RIPRAP FOR SLOPE PROTECTION
N.T.S.



PAINTING AND GROUTING DETAIL
SCALE: 1" = 1'-0"

- NOTES:
1. WATER MAY BE PRESENT WITHIN VOID BETWEEN EXISTING CONCRETE FOUNDATION AND ARCH RIB. REMOVAL OF WATER IF PRESENT SHALL BE PAID FOR UNDER "REMOVAL OF DIRT AND DEBRIS"
 2. CONTRACTOR SHALL SUBMIT PLAN INDICATING THEIR PROPOSED METHOD FOR CONTAINING RUST AND OTHER MATERIALS DURING HAND-TOOL CLEANING, PAINTING, AND PRESSURE GROUTING. REFER TO SPECIAL PROVISIONS FOR ADDITIONAL INFORMATION.



TYPICAL SIDEWALK DETAIL
SCALE: 1" = 1'-0"

- NOTES:
1. REMOVAL OF SIDEWALK PANELS TO BE PAID FOR UNDER THE ITEM "REMOVAL OF CONCRETE SIDEWALK"
 2. INSTALLATION OF NEW SIDEWALK PANELS TO BE PAID FOR UNDER THE ITEM "CONCRETE SIDEWALK"

--	--	--	--	--	--	--	--	--	--	--	--	--	--	--	--	--	--	--	--	--	--	--	--	--	--	--	--	--	--	--	--	--	--	--	--	--	--	--	--	--	--	--	--	--	--	--	--	--	--	--	--	--	--	--	--	--	--	--	--	--	--	--	--	--	--	--	--	--	--	--	--	--	--	--	--	--	--	--	--	--	--	--	--	--	--	--	--	--	--	--	--	--	--	--	--	--	--	--	--	--	--	--	--	--	--	--	--	--	--	--	--	--	--	--	--	--	--	--	--	--	--	--	--	--	--	--	--	--	--	--	--	--	--	--	--	--	--	--	--	--	--	--	--	--	--	--	--	--	--	--	--	--	--	--	--	--	--	--	--	--	--	--	--	--	--	--	--	--	--	--	--	--	--	--	--	--	--	--	--	--	--	--	--	--	--	--	--	--	--	--	--	--	--	--	--	--	--	--	--	--	--	--	--	--	--	--	--	--	--	--	--	--	--	--	--	--	--	--	--	--	--	--	--	--	--	--	--	--	--	--	--	--	--	--	--	--	--	--	--	--	--	--	--	--	--	--	--	--	--	--	--	--	--	--	--	--	--	--	--	--	--	--	--	--	--	--	--	--	--	--	--	--	--	--	--	--	--	--	--	--	--	--	--	--	--	--	--	--	--	--	--	--	--	--	--	--	--	--	--	--	--	--	--	--	--	--	--	--	--	--	--	--	--	--	--	--	--	--	--	--	--	--	--	--	--	--	--	--	--	--	--	--	--	--	--	--	--	--	--	--	--	--	--	--	--	--	--	--	--	--	--	--	--	--	--	--	--	--	--	--	--	--	--	--	--	--	--	--	--	--	--	--	--	--	--	--	--	--	--	--	--	--	--	--	--	--	--	--	--	--	--	--	--	--	--	--	--	--	--	--	--	--	--	--	--	--	--	--	--	--	--	--	--	--	--	--	--	--	--	--	--	--	--	--	--	--	--	--	--	--	--	--	--	--	--	--	--	--	--	--	--	--	--	--	--	--	--	--	--	--	--	--	--	--	--	--	--	--	--	--	--	--	--	--	--	--	--	--	--	--	--	--	--	--	--	--	--	--	--	--	--	--	--	--	--	--	--	--	--	--	--	--	--	--	--	--	--	--	--	--	--	--	--	--	--	--	--	--	--	--	--	--	--	--	--	--	--	--	--	--	--	--	--	--	--	--	--	--	--	--	--	--	--	--	--	--	--	--	--	--	--	--	--	--	--	--	--	--	--	--	--	--	--	--	--	--	--	--	--	--	--	--	--	--	--	--	--	--	--	--	--	--	--	--	--	--	--	--	--	--	--	--	--	--	--	--	--	--	--	--	--	--	--	--	--	--	--	--	--	--	--	--	--	--	--	--	--	--	--	--	--	--	--	--	--	--	--	--	--	--	--	--	--	--	--	--	--	--	--	--	--	--	--	--	--	--	--	--	--	--	--	--	--	--	--	--	--	--	--	--	--	--	--	--	--	--	--	--	--	--	--	--	--	--	--	--	--	--	--	--	--	--	--	--	--	--	--	--	--	--	--	--	--	--	--	--	--	--	--	--	--	--	--	--	--	--	--	--	--	--	--	--	--	--	--	--	--	--	--	--	--	--	--	--	--	--	--	--	--	--	--	--	--	--	--	--	--	--	--	--	--	--	--	--	--	--	--	--	--	--	--	--	--	--	--	--	--	--	--	--	--	--	--	--	--	--	--	--	--	--	--	--	--	--	--	--	--	--	--	--	--	--	--	--	--	--	--	--	--	--	--	--	--	--	--	--	--	--	--	--	--	--	--	--	--	--	--	--	--	--	--	--	--	--	--	--	--	--	--	--	--	--	--	--	--	--	--	--	--	--	--	--	--	--	--	--	--	--	--	--	--	--	--	--	--	--	--	--	--	--	--	--	--	--	--	--	--	--	--	--	--	--	--	--	--	--	--	--	--	--	--	--	--	--	--	--	--	--	--	--	--	--	--	--	--	--	--	--	--	--	--	--	--	--	--	--	--	--	--	--	--	--	--	--	--	--	--	--	--	--	--	--	--	--	--	--	--	--	--	--	--	--	--	--	--	--	--	--	--	--	--	--	--	--	--	--	--	--	--	--	--	--	--	--	--	--	--	--	--	--	--	--	--	--	--	--	--	--	--	--	--	--	--	--	--	--	--	--	--	--	--	--	--	--	--	--	--	--	--	--	--	--	--	--	--	--	--	--	--	--	--	--	--	--	--	--	--	--	--	--	--	--	--	--	--	--	--	--	--	--	--	--	--	--	--	--	--	--	--	--	--	--	--	--	--	--	--	--	--	--	--	--	--	--	--	--	--	--	--	--	--	--	--	--	--	--	--	--	--	--	--	--	--	--	--	--	--	--	--	--	--	--	--	--	--	--	--	--	--	--	--	--	--	--	--	--	--	--	--	--	--	--	--	--	--	--	--	--	--	--	--	--	--	--	--	--	--	--	--	--	--	--	--	--	--	--	--	--	--	--	--	--	--	--	--	--	--	--	--	--	--	--	--	--	--	--	--	--	--	--	--	--	--	--	--	--	--	--	--	--	--	--	--	--	--	--	--	--	--	--	--	--	--	--	--	--	--	--	--	--	--	--	--	--	--	--	--	--	--	--	--	--	--	--	--	--	--	--	--	--	--	--	--	--	--	--	--	--	--	--	--	--	--	--	--	--	--	--	--	--	--	--	--	--	--	--	--	--	--	--	--	--	--	--	--	--	--	--	--	--	--	--	--	--	--	--	--	--	--	--	--	--	--	--	--	--	--	--	--	--	--	--	--	--	--	--	--	--	--	--	--	--	--	--	--	--	--	--	--	--	--	--	--	--	--	--	--	--	--	--	--	--	--	--	--	--	--	--	--	--	--	--	--	--	--	--	--	--	--	--	--	--	--	--	--	--	--	--	--	--	--	--	--	--	--	--	--	--	--	--	--	--	--	--	--	--	--	--	--	--	--	--	--	--	--	--	--	--	--	--	--	--	--	--	--	--	--	--	--	--	--	--	--	--	--	--	--	--	--	--	--	--	--	--	--	--	--	--	--	--	--	--	--	--	--	--	--	--	--	--	--	--	--	--	--	--	--	--	--	--	--	--	--	--	--	--	--	--	--	--	--	--	--	--	--	--	--	--	--	--	--	--	--	--	--	--	--	--	--	--	--	--	--	--	--	--	--	--	--	--	--	--	--	--	--	--	--	--	--	--	--	--	--	--	--	--	--	--	--	--	--	--	--	--	--	--	--	--	--	--	--	--	--	--	--	--	--	--	--	--	--	--	--	--	--	--	--	--	--	--	--	--	--	--	--	--	--	--	--	--	--	--	--	--	--	--	--	--	--	--	--	--	--	--	--	--	--	--	--	--	--	--	--	--	--	--	--	--	--	--	--	--	--	--	--	--	--	--	--	--	--	--	--	--	--	--	--	--	--	--	--