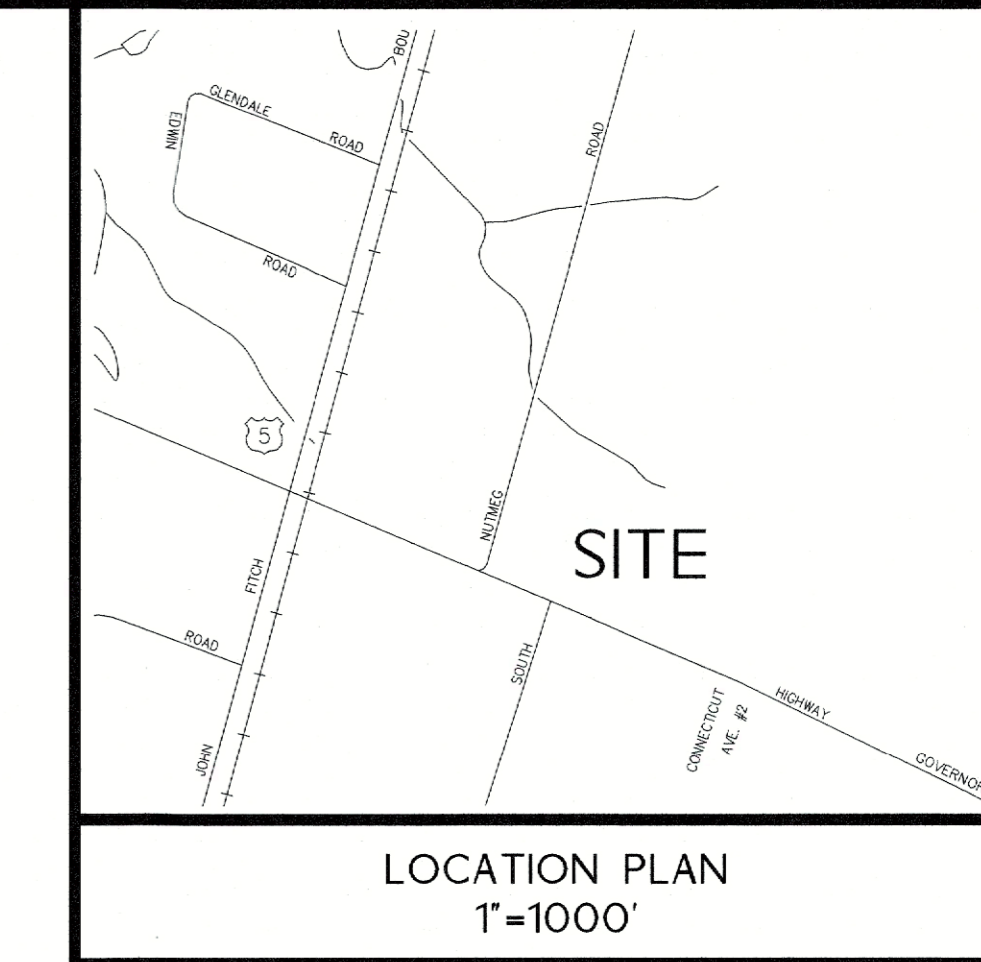
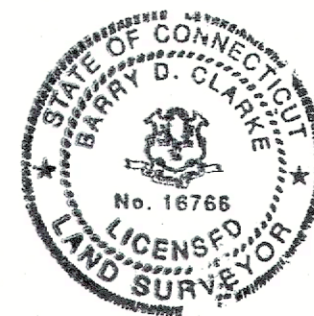


TO MY KNOWLEDGE AND BELIEF, THIS MAP IS SUBSTANTIALLY CORRECT AS NOTED  
HEREON.

1676  
BARRY D. CLARKE, L.S. LIC. N



**Design Professionals**  
CIVIL & TRAFFIC ENGINEERS / PLANNERS / SURVEYORS  
GIS ANALYSTS / LANDSCAPE ARCHITECTS

21 JEFFREY DRIVE  
P.O. BOX 1167  
SOUTH WINDSOR, CT 06074  
860-291-4755 - T  
860-291-4757 - F  
[www.designprofessionalsinc.com](http://www.designprofessionalsinc.com)

Copyright © 2016 Design Professionals Inc. - All Rights Reserved

This plan is issued unless it bears the seal or stamp, and signed signature of the Professional Engineer, Land Surveyor, or Landscape Architect.

Existing utility locations, depicted herein are based on available information and should be field verified prior to construction.

Reproduction techniques used in the production of the plan can result in errors. If there is a discrepancy between the drawing and the record, contact DP&E for additional information is required.

This plan and other items prepared by Design Professionals, Inc. (DPI) are instruments of service and remain its property. The use of these items by DPI, client or subcontractor for any other use without the written consent of DPI is prohibited. The terms set forth in this agreement shall survive the termination or completion of the work. This plan is submitted without the written consent of DPI.

PREPARED FOR:  
BRYAN SCHILBERG  
PRIME MATERIALS RECOVERY  
444 NUTMEC ROAD NORTH  
SOUTH WINDSOR, CT 06074

PROJECT NO.:	2509P
DATE:	3-27-23
DESIGN BY:	---
DRAWN BY:	MHA
CHECKED BY:	IPC

**PRIME MATERIALS  
RECOVERY**  
410 COVERNORS HIGHWAY & 444 NUTMEG ROAD NORTH  
SOUTH WINDSOR, CONNECTICUT

<b>V-1</b>	SHEET	<b>WETLANDS RE-DELINEATION MAP</b>				SCALE: 0 50' 100' 200' 1" = 100'
		NO.	DATE	REVISIONS	BY	