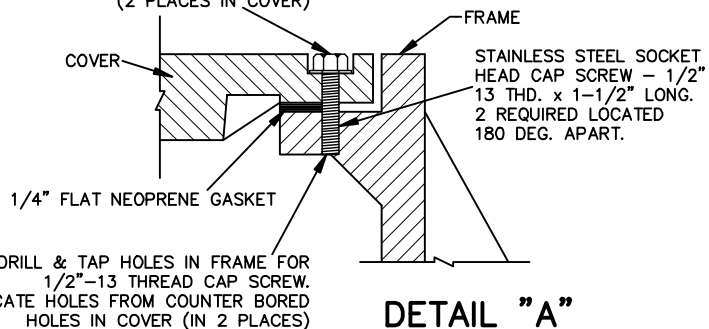


#### SPECIFICATIONS:

1. Pattern shall be no. 1012 WT manufactured by The Cambell Foundry Co. or approved equal.
2. AASHTO HS20-44 highway loading.
3. Material shall be gray cast iron which meets or exceeds ASTM A48-83, class 30B.
4. All castings supplied with:
  - Machined bearing surfaces
  - Non-penetrating pick holes
  - 1/4" flat neoprene gasket
  - 1/2" diameter stainless steel cap screws

COVER DRILL & COUNTERBORE 1/2" DEEP  
FOR 1/2" SOCKET HEAD CAP SCREW.  
(2 PLACES IN COVER)



DETAIL "A"

NOT TO SCALE

TOWN OF SOUTH WINDSOR  
STANDARD DETAIL

MARCH, 2005

STANDARD WATERTIGHT  
MANHOLE FRAME & COVER

REVISED:

APPROVED

PUBLIC WORKS DIRECTOR