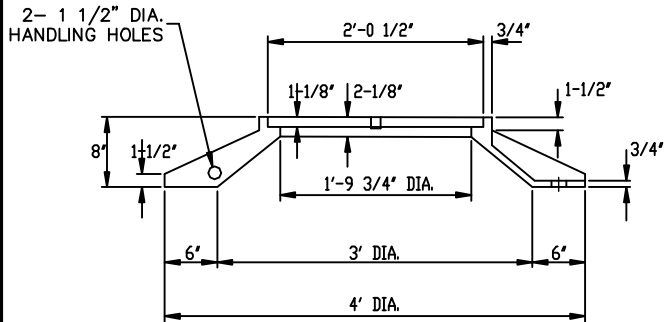
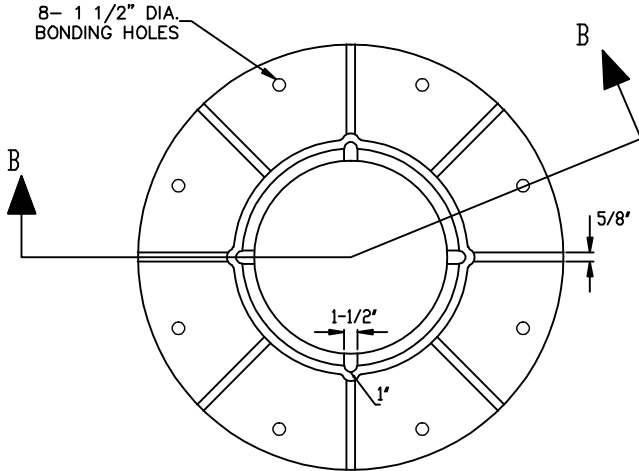
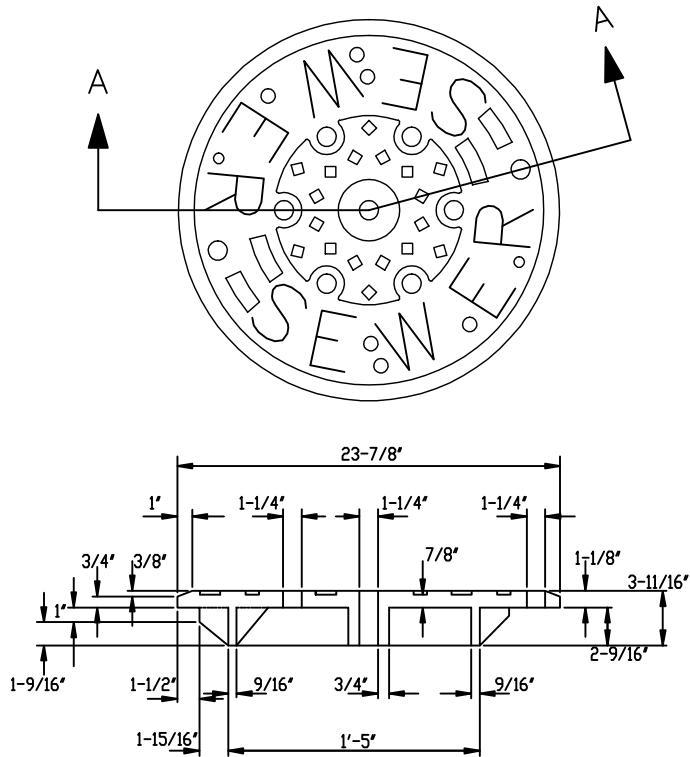


STORM MANHOLE
ALTERNATE



SECTION B-B
CAST IRON FRAME



SECTION A-A
CAST IRON COVER

NOTES:

1. THE LOWER SURFACE OF THE COVER AND THE CORRESPONDING UPPER SURFACE OF THE FRAME SHALL BE MACHINE FINISHED TO PROVIDE A SMOOTH FLAT CONTACT OR FIT, WITHOUT ANY TENDENCY FOR THE COVER TO ROCK OR RATTLE.
2. SANITARY SEWER MANHOLES SHALL BE EQUIPPED WITH VENT HOLE IN CENTER.

NOT TO SCALE

TOWN OF SOUTH WINDSOR
STANDARD DETAIL

MARCH, 2005

CAST IRON MANHOLE
FRAME AND COVER

REVISED:

APPROVED

PUBLIC WORKS DIRECTOR