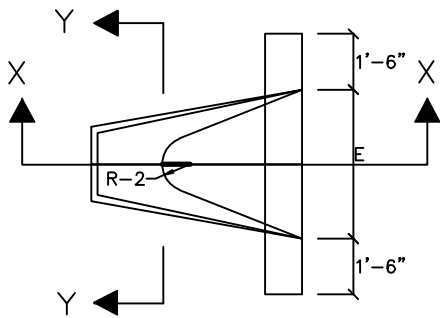
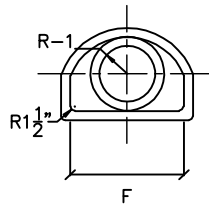


DIMENSIONS

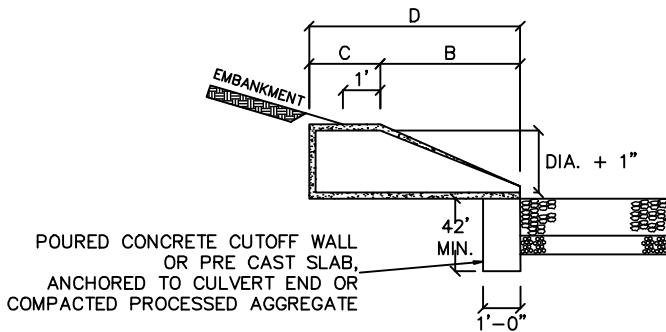
DIA.	A	B	C	D	E	F	R-1	R-2
12"	4"	2'-0"	6'-0 3/8"	6'-0 3/8"	2'-0"	1'-7 15/16"	1'-0 1/4"	9"
15"	6"	2'-3"	3'-10"	6'-1"	2'-6"	2'-0 5/16"	1'-0 1/2"	11"
18"	9"	2'-3"	3'-10"	6'-1"	3'-0"	2'-5"	1'-3 1/2"	1'-0"
24"	9 1/2"	3'-7 1/2"	2'-6"	6'-1 1/2"	4'-0"	2'-9 3/16"	1'-4 13/16"	1'-2"
30"	1'-0"	4'-6"	1'-7 3/4"	6'-1 3/4"	5'-0"	3'-1"	1'-6 1/2"	1'-3"
36"	1'-3"	5'-3"	2'-10 3/4"	8'-1 3/4"	6'-0"	3'-11 13/16"	2'-0 5/16"	1'-8"
42"	1'-9"	5'-3"	2'-11"	8'-2"	6'-6"	4'-5 7/8"	2'-3 1/2"	1'-10"
48"	2'-0"	6'-0"	2'-2"	8'-2"	7'-0"	4'-8 1/2"	2'-4 1/2"	1'-10"



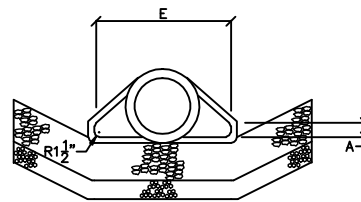
PLAN



SECTION Y-Y



SECTION X-X



END VIEW

NOTES:

JOINTS SHALL BE TONGUE AND GROOVE OR BELL AND SPIGOT
AS REQUIRED TO CONFORM TO PIPE.

WALL THICKNESS SHALL CONFORM TO PIPE THICKNESS.

STRUCTURE SHALL BE PLACED ON EXISTING SUITABLE COMPACTED
MATERIAL OR 12" GRAVEL BASE.

NOT TO SCALE

TOWN OF SOUTH WINDSOR
STANDARD DETAIL

MARCH, 2005

CONCRETE CULVERT END

REVISED:

APPROVED

PUBLIC WORKS DIRECTOR