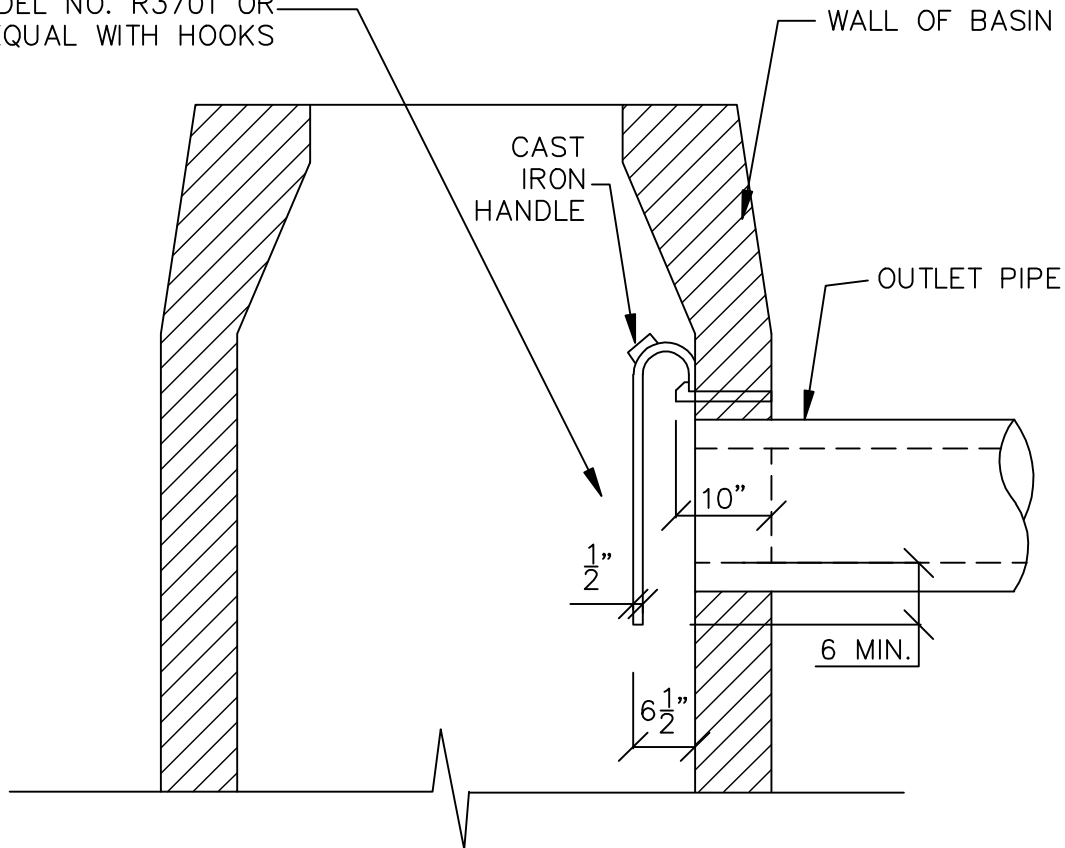


NEENAH TRAP HOOD
MODEL NO. R3701 OR
EQUAL WITH HOOKS



TRAP HOODS SHALL BE INSTALLED
IN ALL CATCH BASINS, WHERE
REQUIRED BY TOWN ENGINEER TO
SATISFY ENVIRONMENTAL CONCERNS.

NOTE: TRAP HOODS MUST BE SIZED TO BE
REMOVABLE FROM CB THROUGH GRATE
OPENING FROM ABOVE.

NOT TO SCALE

TOWN OF SOUTH WINDSOR
STANDARD DETAIL

MARCH, 2005

TRAP HOOD INSTALLATION

REVISED:

APPROVED

PUBLIC WORKS DIRECTOR