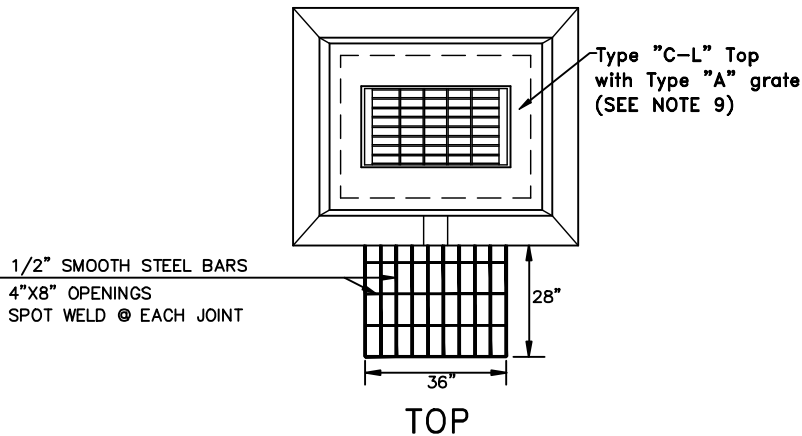


CIRCULAR FASTENERS TO BE SPOT WELDED AS DEPICTED AND ANCHOR BOLTED INTO FRONT OF STRUCTURE WITH MINIMUM 1/2"x3" STAINLESS STEEL BOLTS



#### NOTES:

1. ALL EXTERIOR WALLS OF CATCH BASIN WILL BE FACED, PAINTED AND GROUTED WITH CEMENT.
2. LADDER RUNGS SHALL BE PROVIDED IN CATCH BASIN WHERE HEIGHT OF STRUCTURE EXCEEDS 8 FEET.
3. IN SANDY SOILS APPLY DAMP-PROOFING ON ALL FOUR WALLS.
4. RED BRICK NOT TO BE USED.
5. WHERE PRECAST CONCRETE UNIT IS USED FOR SUMP THE TOP OF THE UNIT SHALL BE AT LEAST 6" BELOW THE BOTTOM OF THE PIPE OUTLET FROM THE CATCH BASIN.
6. WHERE MASONRY CONCRETE UNITS ARE USED, CORBELLING WILL BE PERMITTED. MAX. CORBEL TO BE 3". NO PROJECTION SHALL EXTEND INSIDE OF LIMITS.
7. ADJUST FRAME ELEVATION WITH CONCRETE BRICKS 6" TO 12"
8. PROVIDE MINIMUM 2'-0" OF COVER OVER PIPE AT BELLS
9. PROVIDE 6" OF 3/4" TRAPROCK UNDER EACH STRUCTURE AT BASE.
10. TOP GRATE SHALL BE BOLTED DOWN TO FRAME.
11. ALL FRAMES AND GRATES SHALL BE GALVANIZED.

NOT TO SCALE

TOWN OF SOUTH WINDSOR  
STANDARD DETAIL

MARCH, 2005

## DETENTION BASIN OUTLET

REVISED: MAY, 2001

APPROVED

PUBLIC WORKS DIRECTOR